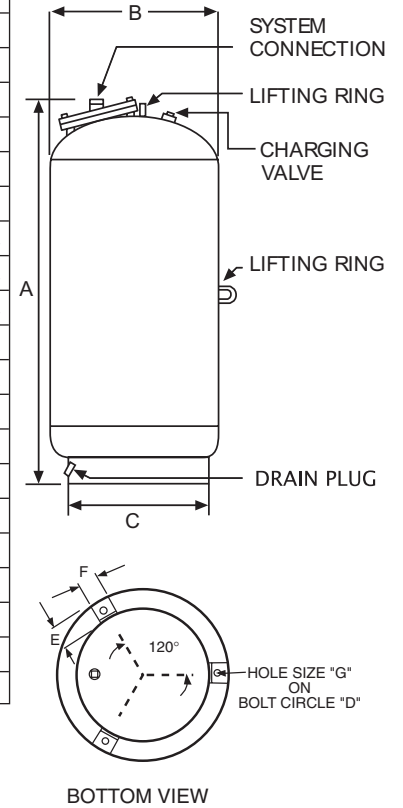


EXTROL® Expansion Tanks

"L" Series (ASME) 125 PSIG Working Pressure

Model No.	Tank Volume		A Height		B Diameter		C Stand Dia.		Sys. Conn. ¹		Ship Weight		Drain Conn.	
	Lit.	Gal.	mm	ins.	mm	ins.	mm	ins.	mm	ins.	kg	lbs.	mm	ins.
200-L	200	53	956	37 ⁵ / ₈	610	24	483	19	25	1	86	190	19	3/4
300-L	300	80	1308	51 ¹ / ₂	610	24	483	19	25	1	104	230	19	3/4
400-L	400	106	1662	65 ⁷ / ₁₆	610	24	483	19	25	1	125	275	19	3/4
500-L	500	132	2006	79	610	24	483	19	25	1	141	311	19	3/4
600-L	600	158	1619	63 ³ / ₄	762	30	610	24	38	1 ¹ / ₂	199	439	25	1
800-L	800	211	2076	81 ³ / ₄	762	30	610	24	38	1 ¹ / ₂	246	543	25	1
1000-L	1000	264	1867	73 ¹ / ₂	914	36	762	30	38	1 ¹ / ₂	276	609	32	1 ¹ / ₄
1200-L	1200	317	2181	85 ⁷ / ₈	914	36	762	30	38	1 ¹ / ₂	318	700	32	1 ¹ / ₄
1400-L	1400	370	2496	98 ¹ / ₄	914	36	762	30	38	1 ¹ / ₂	355	783	32	1 ¹ / ₄
1600-L	1600	422	1756	69 ¹ / ₈	1219	48	1067	42	38	1 ¹ / ₂	502	1106	38	1 ¹ / ₂
2000-L	2000	528	2145	84	1219	48	1067	42	38	1 ¹ / ₂	582	1284	38	1 ¹ / ₂
2500-L	2500	660	2562	100 ⁷ / ₈	1219	48	1067	42	50	2	700	1544	38	1 ¹ / ₂
3000-L	3000	792	3000	118 ¹ / ₈	1219	48	1067	42	50	2	780	1719	38	1 ¹ / ₂
3500-L	3500	925	2820	111	1372	54	1067	42	50	2	992	2187	38	1 ¹ / ₂
4000-L	4000	1057	3175	125	1372	54	1067	42	50	2	1067	2352	38	1 ¹ / ₂
5000-L	5000	1321	3251	128	1524	60	1067	42	50	2	1111	2450	38	1 ¹ / ₂
7500-L	7500	1980	3226	127	1829	72	1372	54	76	3	1818	4000	38	1 ¹ / ₂
7500-L _{CAN}	7500	1980	3658	144	1829	72	1372	54	76	3	1818	4000	38	1 ¹ / ₂
10000-L	10000	2640	4039	159	1829	72	1372	54	76	3	2227	4900	38	1 ¹ / ₂
15000-L	15000	3963	5918	233	1829	72	1372	54	76	3	2727	6000	38	1 ¹ / ₂

¹System connection is NPTF



Maximum Operating Conditions

Operating Temperature	240°F (115°C)
Working Pressure	125 PSIG (8.8 bar)

*Available in 150, 175, 250, or 300 PSIG

Specifications

Description	Standard Construction
Shell	Steel
Bladder	Heavy Duty Butyl
Bladder Thickness	.100 Ins. Minimum
System Connection	Forged Steel
Factory Precharge	12 PSIG (.84 bar)
Finish	Red Oxide Primer

Designed & constructed per ASME Section VIII, Division 1.

Optional Seismic Restraints

TANK Diam B	BOLT CIRCLE D	DIM. E	DIM. F	HOLE SIZE G
24	21	2	2	9/16
30	27	3	3	1 ¹ / ₁₆
36	34	4	4	7/8
48	46	4	4	7/8
54	46	4	4	7/8
60	46	4	4	7/8
72	58	4	4	1

All dimensions and weights are approximate.

Job Name _____

Location _____

Engineer _____

Contractor _____

Contractor P.O. No. _____

Sales Representative _____

Model No. Ordered _____

ASME CERTIFICATION REQUIRED _____ Yes _____ No