

**Material:** Steel

**Standard Finish:** Electro-Plated or Hot-Dip Galvanized

**Service:** Designed for attaching a hanger rod to the flange of a beam.

**Ordering:** Specify part number and finish. When Retaining Strap is required, order B312 separately. See page 30.

**Recommended Setscrew Torque:**

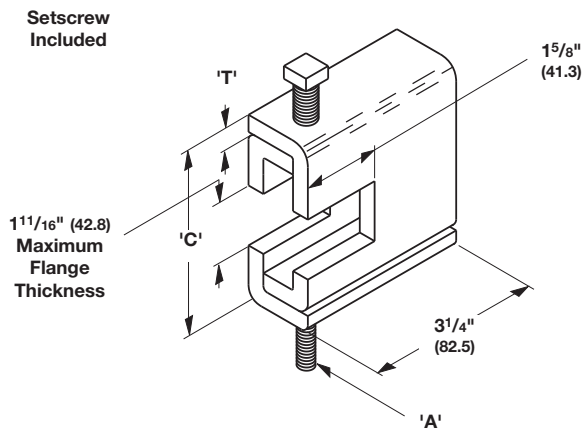
$3/8''-16 = 150$  in-lbs (16.9 N•m)

$1/2''-13 = 350$  in-lbs (39.5 N•m)

**Approvals:** Complies with Federal Specification WW-H-171E & A-A-1192A Type 19 and Manufacturers Standardization Society MSS SP-69 & SP-58 Type 19.

**Figure B303-B309 Beam Clamps**

Part No.	Rod Size 'A'	Setscrew Size	'C'		'T'		Design Load		Wt./C	
			Lbs.	kN	Lbs.	kN	Lbs.	kg		
B303	1/4"-20	3/8"-16	25/16"	(58.7)	11 Ga.	(3.0)	400	(1.78)	72	(32.6)
B304	5/16"-18	3/8"-16	25/16"	(58.7)	11 Ga.	(3.0)	600	(2.67)	72	(32.6)
B305	3/8"-16	3/8"-16	25/16"	(58.7)	11 Ga.	(3.0)	600	(2.67)	72	(32.6)
B306	3/8"-16	1/2"-13	27/16"	(61.9)	7 Ga.	(4.5)	1100	(4.89)	97	(44.0)
B307	1/2"-13	1/2"-13	27/16"	(61.9)	7 Ga.	(4.5)	1100	(4.89)	97	(44.0)
B308	1/2"-13	1/2"-13	29/16"	(65.1)	1/4"	(6.3)	1500	(6.67)	133	(60.3)
B309	5/8"-11	1/2"-13	29/16"	(65.1)	1/4"	(6.3)	1500	(6.67)	133	(60.3)



**Material:** Steel

**Standard Finish:** Electro-Plated or Hot-Dip Galvanized

**Service:** Designed for attaching a hanger rod to the flange of a beam.

**Ordering:** Specify part number and finish. When Retaining Strap is required, order B312 separately. See page 30.

**Recommended Setscrew Torque:**

$1/2''-13 = 350$  in-lbs (39.5 N•m)

$5/8''-11 = 700$  in-lbs (79.0 N•m)

**Minimum Flange Thickness:**

For B321-1 thru B321-3 = 3/8" (9.5)

For B321-4 & B321-5 = 5/8" (15.9)

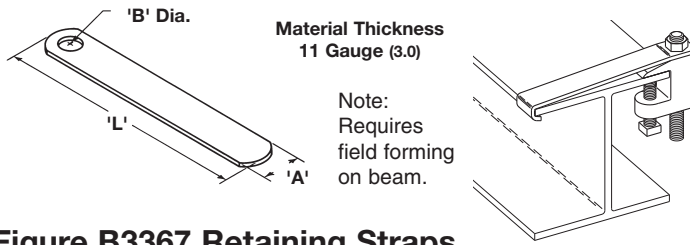
**Approvals:** Complies with Federal Specification WW-H-171E & A-A-1192A Type 19 and Manufacturers Standardization Society MSS SP-69 & SP-58 Type 19.

**Figure B321 Series Beam Clamps**

Part No.	Rod Size 'A'	Setscrew Size	'C'		'T'		Design Load		Wt./C	
			Lbs.	kN	Lbs.	kN	Lbs.	kg		
B321-1	3/8"-16	1/2"-13	39/16"	(92.1)	1/4"	(6.3)	1300	(5.78)	187	(84.8)
B321-2	1/2"-13	1/2"-13	39/16"	(92.1)	1/4"	(6.3)	1400	(6.23)	186	(84.3)
B321-3	5/8"-11	1/2"-13	39/16"	(92.1)	1/4"	(6.3)	1600	(7.12)	185	(83.9)
B321-4	5/8"-11	5/8"-11	323/32"	(94.4)	5/16"	(7.9)	1800	(8.00)	239	(108.4)
B321-5	3/4"-10	5/8"-11	323/32"	(94.4)	5/16"	(7.9)	2000	(8.89)	238	(107.9)

All dimensions in charts and on drawings are in inches. Dimensions shown in parentheses are in millimeters unless otherwise specified.

# Beam Clamps



**Material:** Steel

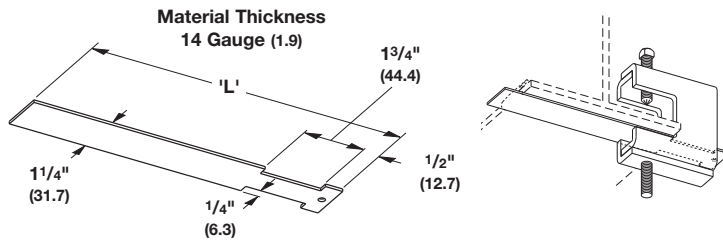
**Standard Finish:** Pre-Galvanized

**Service:** Designed for use with B3031, B3033, and B3034 C-Clamps.

**Ordering:** Specify part number, length 'L', (add 2" (50.8) minimum to flange width), and finish.

**Figure B3367 Retaining Straps**

Part No.	For Use With	'A'		'B'		Wt./C for Length 'L' of							
						6" (152.4)		8" (203.2)		10" (254.0)		12" (304.8)	
		Lbs.	kg	Lbs.	kg	Lbs.	kg	Lbs.	kg	Lbs.	kg		
B3367-3/8	B3033-3/8, B3034-3/8 & B3031-3/8	1 1/4" (31.7)	7/16" (11.1)	26	(11.8)	35	(15.9)	44	(19.9)	61	(27.6)		
B3367-1/2	B3033-1/2 & B3034-1/2	1 1/4" (31.7)	9/16" (14.3)	25	(11.3)	34	(15.4)	43	(19.5)	60	(27.2)		
B3367-5/8	B3033-5/8 & B3034-5/8	1 1/4" (31.7)	11/16" (17.5)	24	(10.9)	33	(14.9)	42	(19.0)	59	(26.7)		
B3367-3/4	B3033-3/4 & B3034-3/4	1 1/4" (31.7)	13/16" (20.6)	23	(10.4)	32	(14.5)	41	(18.6)	58	(26.3)		



**Material:** Steel

**Standard Finish:** Pre-Galvanized

**Service:** Designed for use with B303-B309 and B321 beam clamps.

**Ordering:** Specify part number and finish.

**Figure B312 Retaining Straps**

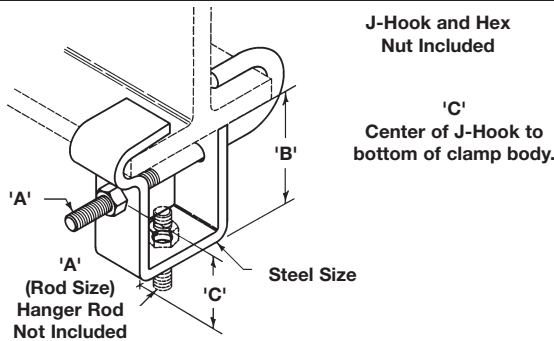
Part No.	For Flange With		'L'		Wt./C	
					Lbs.	kg
B312-6	6"	(152.4)	9"	(228.6)	22	(10.0)
B312-9	9"	(228.6)	12"	(304.8)	30	(13.6)
B312-12	12"	(304.8)	15"	(381.0)	40	(18.1)
B312-15	15"	(381.0)	18"	(457.2)	49	(22.2)

**Notes:**

Maximum beam thickness 3/4" (19.0).

For thicker beams step up one flange width size.

Requires field forming on beam.



**Material:** Steel

**Standard Finish:** Plain or Electro-Plated

**Service:** Designed for attaching rod under a beam flange. Adjustable for 4" (101.6) to 8" (203.2) flange widths.

Maximum flange thickness 3/4" (19.0).

**Ordering:** Specify part number and finish.

**Approvals:** Complies with Federal Specification WW-H-171E Type 54 & A-A-1192A Type 27 and Manufacturers Standardization Society MSS SP-69 & SP-58 Type 27.

**Figure B3040 Adjustable Beam Clamp**

Part No.	Rod Size 'A'	'B'		'C'		Steel Size		Design Load		Wt./C	
								Lbs.	kN	Lbs.	kg
B3040-3/8	3/8"-16	2 3/4"	(69.8)	1 13/16"	(46.0)	1/4" x 1 1/4"	(6.3 x 31.7)	300	(1.33)	120	(54.4)
B3040-1/2	1/2"-13	2 3/4"	(69.8)	1 3/4"	(44.4)	1/4" x 1 1/2"	(6.3 x 38.1)	700	(3.11)	160	(72.6)
B3040-5/8	5/8"-11	3"	(76.2)	1 3/4"	(44.4)	1/4" x 1 3/4"	(6.3 x 44.4)	1000	(4.45)	216	(98.0)
B3040-3/4	3/4"-10	3 3/8"	(85.7)	1 7/8"	(47.6)	3/8" x 2 1/2"	(9.5 x 63.5)	1800	(8.00)	442	(200.5)

All dimensions in charts and on drawings are in inches. Dimensions shown in parentheses are in millimeters unless otherwise specified.

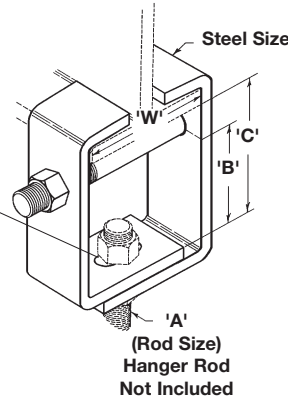
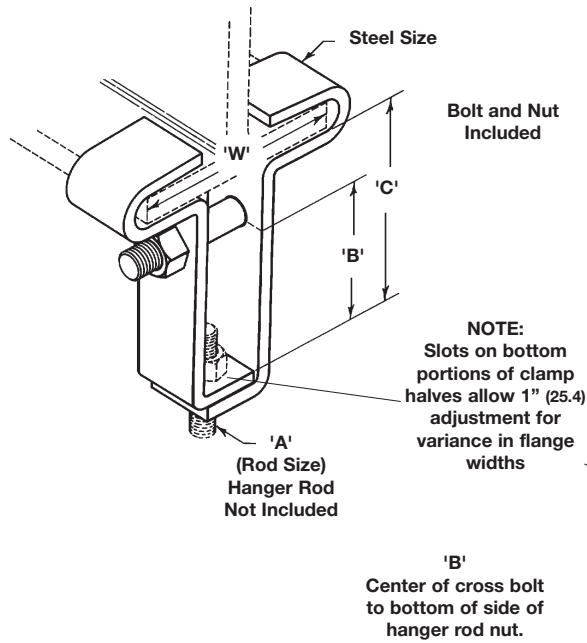
**Material:** Steel

**Standard Finish:** Plain or Electro-Plated

**Service:** Designed for attaching a hanger rod to be centered under beam flanges. 2" (50.8) vertical adjustment is provided in the clamp.

**Ordering:** Specify part number, flange width, and finish.

**Approvals:** Complies with Federal Specification WW-H-171E & A-A-1192A Type 21 and Manufacturers Standardization Society MSS SP-69 & SP-58 Type 21.



- B3055-3/8 x 2"
- B3055-3/8 x 3"
- B3055-3/8 x 4"
- B3055-1/2 x 2"
- B3055-1/2 x 3"
- B3055-1/2 x 4"
- B3055-5/8 x 2"
- B3055-5/8 x 3"
- B3055-5/8 x 4"
- B3055-3/4 x 2"
- B3055-3/4 x 3"
- B3055-3/4 x 4"
- B3055-7/8 x 3"
- B3055-7/8 x 4"
- B3055-7/8 x 5"
- B3055-1 x 3"
- B3055-1 x 4"
- B3055-1 x 5"
- B3055-1 x 6"
- B3055-1 1/8 x 4"
- B3055-1 1/8 x 5"
- B3055-1 1/8 x 6"
- B3055-1 1/8 x 7"
- B3055-1 1/4 x 4"
- B3055-1 1/4 x 5"
- B3055-1 1/4 x 6"
- B3055-1 1/4 x 7"

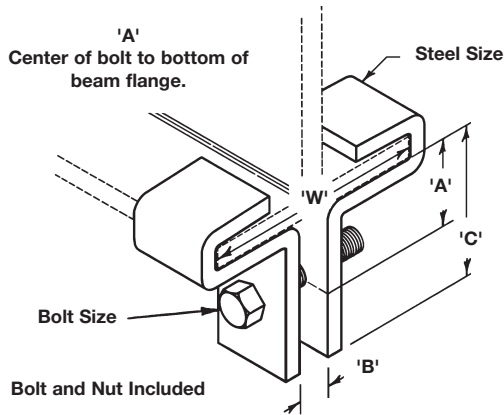
**Figure B3055 Steel Beam Clamp**

Part No.	Rod Size 'A'	'B'	'C'	Steel Size		Design Load			
				Lbs.	kN				
B3055-3/8	3/8"-16	3"	(76.2)	4"	(101.6)	1/4" x 1 1/4"	(6.3 x 31.7)	550	(2.44)
B3055-1/2	1/2"-13	3"	(76.2)	4"	(101.6)	1/4" x 1 1/2"	(6.3 x 38.1)	850	(3.78)
B3055-5/8	5/8"-11	3 1/4"	(82.5)	4 1/2"	(114.3)	3/8" x 1 1/2"	(9.5 x 38.1)	1100	(4.89)
B3055-3/4	3/4"-10	3 1/4"	(82.5)	4 1/2"	(114.3)	3/8" x 2"	(9.5 x 50.8)	1500	(6.67)
B3055-7/8	7/8"-9	3 1/2"	(88.9)	5"	(127.0)	1/2" x 2"	(12.7 x 50.8)	2600	(11.56)
B3055-1	1"-8	3 1/2"	(88.9)	5 1/2"	(139.7)	1/2" x 2 1/2"	(12.7 x 63.5)	4300	(19.12)

Flange Width 'W'	Approximate Wt./C For Beam Clamp Size Lbs. (kg)												
	B3055-3/8"		B3055-1/2"		B3055-5/8"		B3055-3/4"		B3055-7/8"		B3055-1"		
4"	(101.6)	168	(76.2)	201	(91.2)	328	(148.8)	434	(196.8)	657	(298.0)	797	(361.5)
5"	(127.0)	181	(82.1)	217	(98.4)	352	(159.6)	466	(211.4)	667	(302.5)	824	(373.7)
6"	(152.4)	193	(87.5)	231	(104.8)	373	(169.2)	495	(224.5)	705	(319.8)	877	(397.8)
7"	(177.8)	205	(93.0)	246	(111.6)	395	(179.2)	525	(238.1)	744	(337.5)	926	(420.0)
8"	(203.2)	214	(97.1)	256	(116.1)	411	(186.4)	546	(247.6)	773	(350.6)	962	(436.3)
10"	(254.0)	235	(106.6)	282	(127.9)	449	(203.6)	596	(270.3)	840	(381.0)	1046	(474.4)
12"	(304.8)	259	(117.5)	311	(141.0)	493	(223.6)	655	(297.1)	918	(416.4)	1143	(518.4)

All dimensions in charts and on drawings are in inches. Dimensions shown in parentheses are in millimeters unless otherwise specified.

# Beam Clamps



**Material:** Steel

**Standard Finish:** Plain or Electro-Plated

**Service:** Designed for attaching hanger rods centered under beam flanges. Recommended to use with B3200 Series up to size 1 1/2" (38.1).

**Ordering:** Specify part number, flange width, and finish.

**Approvals:** Complies with Federal Specification WW-H-171E & A-A-1192A Type 21 and Manufacturers Standardization Society MSS SP-69 & SP-58 Type 21.

**Part Number**

**Example:** B3050-2 x 'W' finish

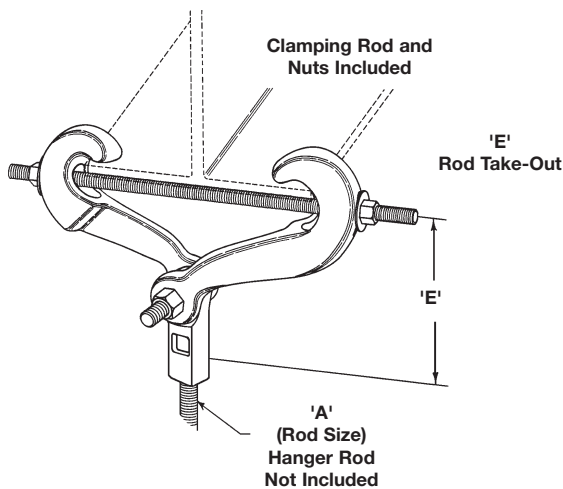
**Figure B3050 Beam Clamp**

Part No. & Size	Bolt Size	'A'		'B' Minimum		'C'		Steel Size		Design Load	
										Lbs.	kN
B3050-2	1/2"-13	1 3/8"	(34.9)	5/8"	(15.9)	2 1/8"	(54.0)	1/4" x 1 1/4"	(6.3 x 31.7)	1000	(3.11)
B3050-5	3/4"-10	1 7/8"	(47.6)	7/8"	(22.2)	3"	(76.2)	1/2" x 2"	(12.7 x 50.8)	3000	(6.67)

Beam Clamps

Flange Width 'W'	Flange Thickness				Wt./C For Beam Clamp Size				
	Min.		Max.		2		5		
					lbs.	kg	lbs.	kg	
4"	(101.6)	3/16"	(4.8)	1/2"	(12.7)	116	(52.6)	429	(194.6)
5"	(127.0)	5/16"	(7.9)	5/8"	(15.9)	125	(56.7)	458	(207.8)
6"	(152.4)	1/4"	(6.3)	3/4"	(19.0)	134	(60.8)	486	(220.5)
7"	(177.8)	7/16"	(11.1)	7/8"	(22.2)	143	(64.9)	514	(233.2)
8"	(203.2)	7/16"	(11.1)	7/8"	(22.2)	152	(69.0)	543	(246.3)
9"	(228.6)	9/16"	(14.3)	1"	(25.4)	160	(72.6)	571	(259.0)
10"	(254.0)	5/8"	(15.9)	1"	(25.4)	169	(76.7)	599	(271.8)
12"	(304.8)	5/8"	(15.9)	1 1/4"	(31.7)	187	(84.8)	656	(297.6)

All dimensions in charts and on drawings are in inches. Dimensions shown in parentheses are in millimeters unless otherwise specified.



**Material:** Malleable Iron

**Standard Finish:** Plain or Electro-Plated

**Service:** Designed for attaching a hanger rod to the bottom flange of a beam. Adjustable for flange widths of 3" (76.2) to 7" (177.8) and a flange thickness of no greater than 5/8" (15.9).

**Ordering:** Specify part number and finish

**Approvals:** Underwriters' Laboratories Listed. Complies with Federal Specification WW-H-171E & A-A-1192A Type 30 and Manufacturers Standardization Society MSS SP-69 & SP-58 Type 30.

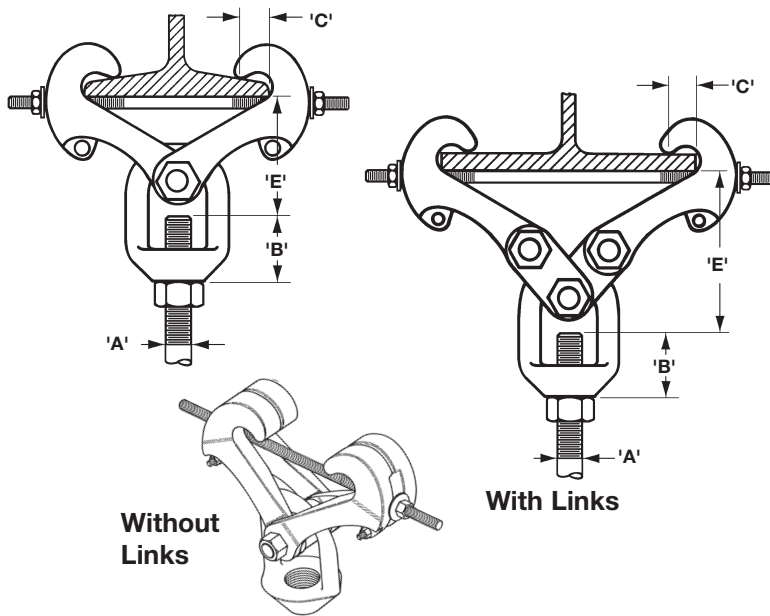
**Figure B3054 Malleable Iron Beam Clamp**  
(Available without extension piece as B3054).

Part No.	'A' Rod Size	Rod Take Out 'E' For Beam Flange Width Of									
		3" (76.2)		4" (101.6)		5" (127.0)		6" (152.4)		7" (177.8)	
B3054-3/8	3/8"-16	4 11/16"	(119.1)	4 9/16"	(115.9)	4 5/8"	(117.5)	4"	(101.6)	3 1/8"	(79.4)
B3054-1/2	1/2"-13	4 13/16"	(122.2)	4 1/2"	(114.3)	4 5/16"	(109.5)	3 15/16"	(100.0)	3 1/4"	(82.5)
B3054-5/8	5/8"-11	4 7/8"	(123.8)	4 5/8"	(117.5)	4 3/8"	(111.1)	3 3/4"	(95.2)	3 5/16"	(84.1)
B3054-3/4	3/4"-10	5 1/8"	(130.2)	5"	(127.0)	4 5/8"	(117.5)	4 1/4"	(107.9)	3 3/4"	(95.2)
B3054-7/8	7/8"-9	5 3/16"	(131.8)	4 7/8"	(123.8)	4 11/16"	(119.1)	4 5/16"	(109.5)	3 3/4"	(95.2)

Part No.	Design Load		Maximum Iron Pipe Size		Wt./C	
	Lbs.	kN	Per UL		Lbs.	kg
B3054-3/8	730	(3.25)	4"	(100)	236	(107.0)
B3054-1/2	1350	(6.00)	8"	(200)	254	(115.2)
B3054-5/8	1365	(6.07)	10"	(250)	260	(117.9)
B3054-3/4	1365	(6.07)	10"	(250)	278	(126.1)
B3054-7/8	1365	(6.07)	10"	(250)	292	(132.4)

All dimensions in charts and on drawings are in inches. Dimensions shown in parentheses are in millimeters unless otherwise specified.

# Beam Clamps



**Material:** Forged Steel

**Standard Finish:** Plain or Electro-Plated

**Service:** Designed for attaching a hanger rod to the bottom flange of a beam. Adjustable from flange widths of 3" (76.2) to 15" (381.0), and flange thickness of no greater than 1 1/32" (26.2).

**Ordering:** Specify part number, rod size and finish.

**Approvals:** Complies with Federal Specification WW-H-171E & A-A-1192A (Type 28 without links; Type 29 with links,) and MSS SP-69 & SP-58 (Type 28 without links; Type 29 with links).

**Note:** Design load for B3291 thru B3295 based on maximum rod size shown. Use the appropriate all threaded rod design load shown on page 242 for sizes less than maximum.

**Figure B3291, B3292, B3293, B3294, B3295, B3296, B3297, B3298 UFS Beam Clamp With Weldless Eye Nut**  
Available with left hand threads by adding an L to part number Example: B3291L-\*

Beam Clamps

Part No. *Rod Size	Maximum Beam Flange Thickness		Rod Size 'A' (Specify) *	'B'		'C'		Design Load		Wt./C	
	In.	mm						Lbs.	kN	Lbs.	kg
B3291-*	.60	(15.2)	3/8"-16, 1/2"-13, 5/8"-11, 3/4"-10	1 1/4"	(31.7)	1 1/8"	(28.6)	3230	(14.36)	390	(176.9)
B3292-*	.60	(15.2)	7/8"-9, 1"-8	1 11/16"	(42.9)	1 1/8"	(28.6)	5900	(26.24)	915	(415.0)
B3293-*	.60	(15.2)	3/8"-16, 1/2"-13, 5/8"-11, 3/4"-10, 7/8"-9, 1"-8	1 11/16"	(42.9)	1 1/8"	(28.6)	5900	(26.24)	1300	(589.6)
B3294-*	1.031	(26.2)	7/8"-9, 1"-8	1 1/2"	(38.1)	1 1/8"	(28.6)	5900	(26.24)	2165	(982.0)
B3295-*	1.031	(26.2)	7/8"-9, 1"-8	1 1/2"	(38.1)	1 1/8"	(28.6)	5900	(26.24)	3385	(1535.4)
B3296-*	1.031	(26.2)	1"-8, 1 1/8"-7, 1 1/4"-7, 1 1/2"-6	2 1/8"	(54.0)	1 1/8"	(28.6)	11500	(51.15)	2390	(1084.1)
B3297-*	1.031	(26.2)	1 1/8"-7, 1 1/4"-7, 1 1/2"-6	2 1/8"	(54.0)	1 1/8"	(28.6)	11500	(51.15)	3575	(1621.6)
B3298-*	1.031	(26.2)	1 3/4"-5, 2"-4 1/2	4 9/16"	(115.9)	1 1/8"	(28.6)	11500	(51.15)	3675	(1666.9)

Part No.	'E' Rod Take-Out For Flange Width												
	3"	4"	5"	6"	7"	8"	9"	10"	11"	12"	13"	14"	15"
B3291-*	4 1/2"	5 5/16"	4 1/16"	3 5/8"	2 7/8"	--	--	--	--	--	--	--	--
B3292-*	--	4 3/4"	4 7/16"	4 1/16"	3 3/8"	--	--	--	--	--	--	--	--
B3293-*	--	--	--	--	5 15/16"	6"	5 5/16"	5"	--	--	--	--	--
B3294-*	--	6 13/16"	6 5/8"	6 3/8"	5 7/8"	5 7/8"	5 3/8"	4 13/16"	--	--	--	--	--
B3295-*	--	--	--	--	--	--	--	--	8 1/8"	7 3/4"	7 1/8"	6 5/8"	6 1/16"
B3296-*	--	7 3/16"	7"	6 3/4"	6 1/4"	6 5/16"	5 13/16"	5 3/16"	--	--	--	--	--
B3297-*	--	--	--	--	--	--	--	--	8 1/2"	8 1/8"	7 1/2"	7"	6 7/16"
B3298-*	--	8 3/8"	8 7/16"	8 3/16"	7 3/4"	7 3/4"	7 1/4"	6 5/8"	--	--	--	--	--

To determine (mm) in the above chart, multiply inches by 25.4.

\* Rod Size required to finish part number (see Rod Size 'A' in top chart).

Δ These part numbers are furnished with links.

All dimensions in charts and on drawings are in inches. Dimensions shown in parentheses are in millimeters unless otherwise specified.