

Bronze Bodied and Stainless Steel Bodied System Lubricated Circulators



DESCRIPTION

A series of in-line wet rotor circulation pumps designed specifically for quiet operation in open (potable) water systems. These pumps have 100% lead-free bronze or stainless steel bodies.

Automatic Timer and Aquastat accessories are available. (See Submittal A-128A for details).

CONSTRUCTION MATERIALS

Pump Body: NBF: 100% Lead-Free Bronze
 SSF: Stainless Steel
 Bearings: Carbon
 Impeller: NBF-33: Noryl®
 All Others: Polypropylene
 Shaft: Ceramic

OPERATING DATA

Maximum Working Pressure: 150 psi (10.3 Bar)
 Maximum Operating Temperature
 NBF-33: 225°F (107°C)
 All Others: 230°F (110°C)

SCHEDULE

MODEL NUMBER	PART NUMBER	CONNECTION	APPROX. SHPG. WT. Lbs. (Kg)	STANDART 60 CYCLE 115 VOLT* SINGLE PHASE MOTOR CHARACTERISTICS			TAGGING INFORMATION	QUANTITY
				WATTS	F.L. AMPS	RPM		
NBF-8S/LW	103257	1/2" Sweat	9.0 (4.1)	39	0.38	2800		
NBF-9U/LW	103258	Union (See Following Page)	9.3 (4.2)	41	0.40	2800		
SSF-9U/LW	103360	Union (See Following Page)	9.3 (4.2)	41	0.40	2800		
NBF-10S/LW	103259	1/2" Sweat	9.0 (4.1)	52	0.46	2800		
NBF-12U/LW	103261	Union (See Following Page)	9.3 (4.2)	55	0.48	2800		
SSF-12U/LW	103361	Union (See Following Page)	9.3 (4.2)	55	0.48	2800		
NBF-12F/LW	103260	Flange 3/4, 1, 1-1/4, 1-1/2	9.5 (4.3)	55	0.48	2800		
SSF-12F/LW	103358	Flange 3/4, 1, 1-1/4, 1-1/2	9.5 (4.3)	55	0.48	2800		
NBF-18S	103316	1/2" Sweat	9.0 (4.1)	90	0.74	3000		
NBF-22U	103255	Union (See Following Page)	9.3 (4.2)	92	0.80	2940		
SSF-22U	103362	Union (See Following Page)	9.3 (4.2)	92	0.80	2940		
NBF-22	103252	Flange 3/4, 1, 1-1/4, 1-1/2	9.5 (4.3)	92	0.80	2940		
SSF-22	103357	Flange 3/4, 1, 1-1/4, 1-1/2	9.5 (4.3)	92	0.80	2940		
NBF-33	103351	Flange 3/4, 1, 1-1/4, 1-1/2	10.4 (4.7)	125	1.10	2950		

*230 volt motors are available on select models upon request. Contact factory for technical information.

TYPICAL SPECIFICATIONS

The contractor shall furnish and install in-line circulating pumps as illustrated on the plans and in accordance with the following specifications:

- The pumps shall be of the horizontal system lubricated type specifically designed and guaranteed for quiet operation.
- Pump to be suitable for _____°F (_____°C) [choose one: 225°F (107°C) for NBF-33 or 230°F (110°C) for all other circulators] operation at 150 psig (10.3 Bar) working pressure.
- The pumps shall have a ceramic shaft supported by carbon bearings. Bearings are to be lubricated by the circulating fluid.

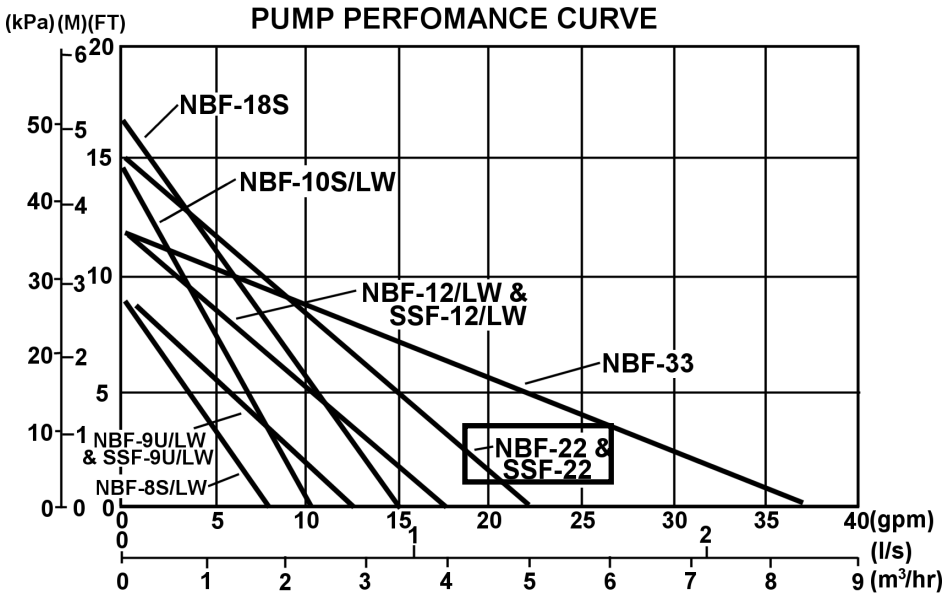
- Pump body shall be 100% lead-free bronze for NBF circulators or stainless steel for SSF circulators.
- Motor stator to be isolated from circulating fluid through use of stainless steel can. Rotor to be sheathed in stainless steel.
- Motors shall be non-overloading at any point on the pump curve. Motors to have built-in impedance protection.

Pumps to have a capacity of _____ GPM at _____ foot head when powered by 115 or 230 volt, 60 cycle single phase electrical supply.

All pumps are to be ITT Industries - Bell & Gossett Model _____.

Bell & Gossett





HALF UNION CONNECTIONS

For NBF-9U/LW, NBF-12U/LW, NBF-22U, SSF-9U/LW, SSF-12U/LW, SSF-22U

MODEL NUMBER	PART NUMBER	DESCRIPTION (SETS OF 2)
UC-1/2S	113203	1/2" Bronze Union Sweat
UC-3/4S	113201	3/4" Bronze Union Sweat
UC-3/4NPT	113202	3/4" Bronze Union NPT Female

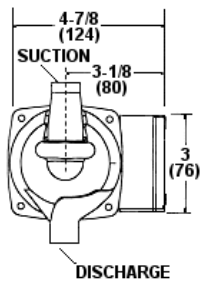


Bronze Half Union (Sweat)
UC-1/2S and UC-3/4S

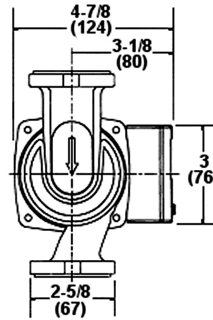
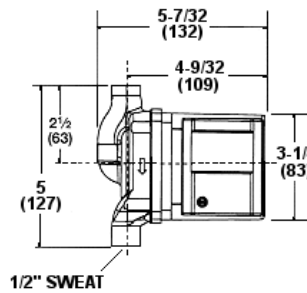


Bronze Half Union (Threaded)
UC-3/4NPT

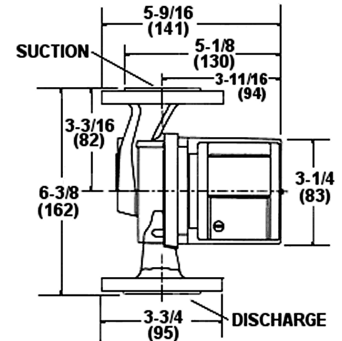
DIMENSIONS IN INCHES (MM)



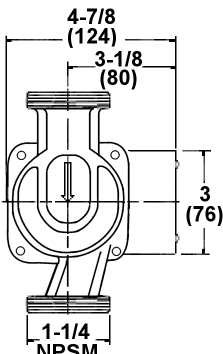
NBF-8S/LW, NBF-10S/LW or NBF-18S



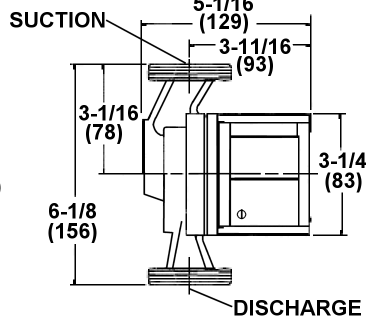
NBF-12/LW, SSF-12/LW, NBF-22 OR SSF-22



NBF-33



NBF-9U/LW, NBF-12U/LW, NBF-22U
SSF-9U/LW, SSF-12U/LW, SSF-22U



Dimensions are subject to change. Not to be used for construction purposes unless certified.

