

CHICAGO FAUCETS
a Geberit company

2100 South Clearwater Drive
Des Plaines, IL 60018
Phone: 847-803-5000
Fax: 847-803-5454
www.chicagofaucets.com

REPAIR PARTS

BY: JAR DATE: 10-03-00
CHK: *[Signature]* REV: 10-01-08

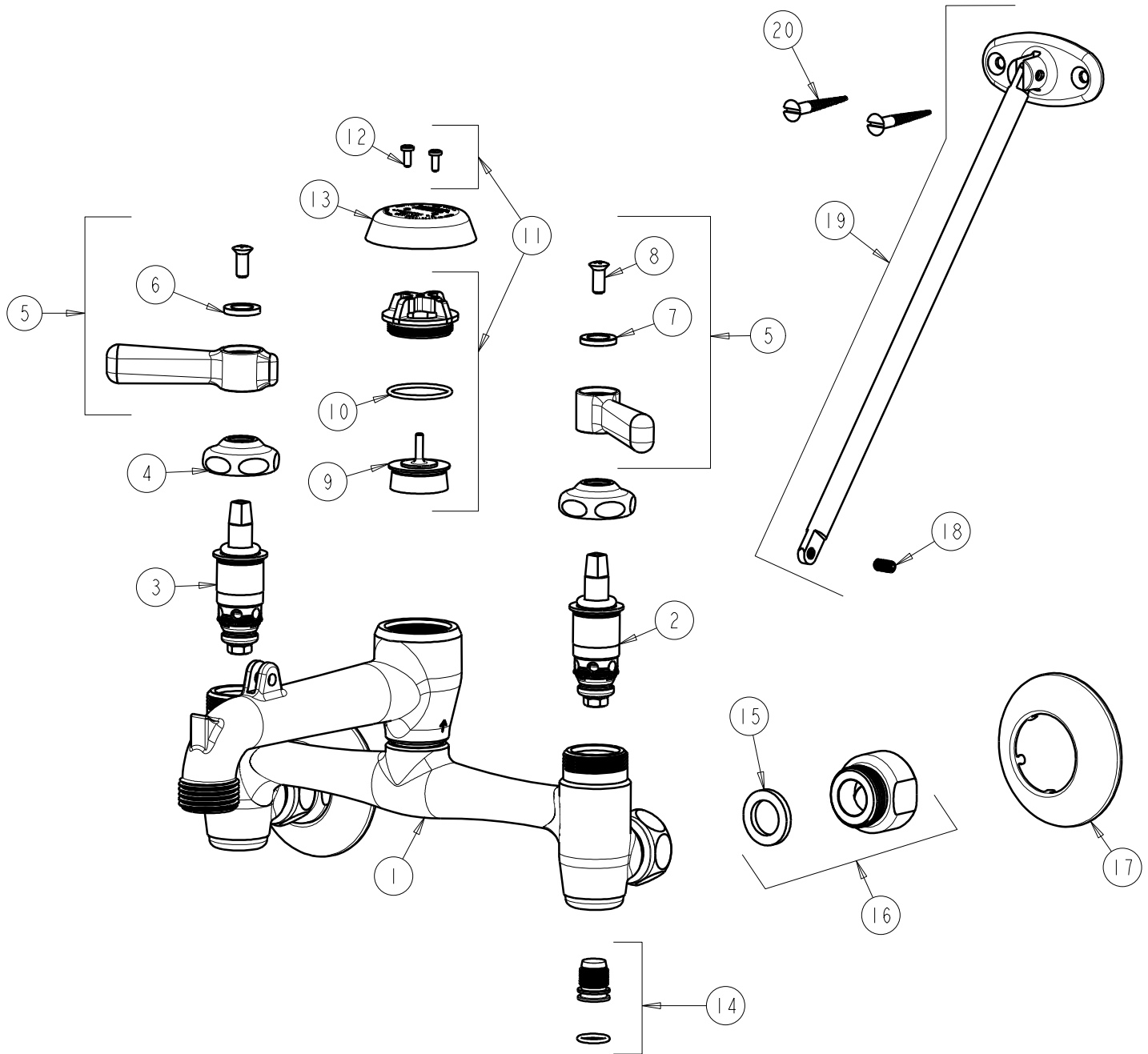
FITTING NO.

897-RCF

SUBMITTED MODEL NO.

ITEM NO.

FOR TECHNICAL ASSISTANCE
1-800-TEC-TRUE (1-800-832-8783)



ITEM	PART NO.	DESCRIPTION	ITEM	PART NO.	DESCRIPTION
1	—	VALVE BODY (NOT SOLD SEPERATELY)	11	892-202KJKNF	VACUUM BREAKER REPAIR KIT
2	1-099XTJKNF	QUATURN CARTRIDGE, R.H.	12	333-321JKNF	VACUUM BREAKER TORX SCREW
3	1-100XTJKNF	QUATURN CARTRIDGE, L.H.	13	892-154JKCP	VACUUM BREAKER COVER
4	1-214JKCP	CAP	14	897-014KJCRBF	INTEGRAL STOP STEM ASSEMBLY
5	369-PRJKCP	LEVER HANDLE ASSEMBLY (PAIR)	15	1-011JKNF	WASHER, .97 X .62 X .12
6	633-023JKNF	INDEX BUTTON (RED)	16	897-012JKRCF	ARM ASSEMBLY (INCLUDES WASHER)
7	633-123JKNF	INDEX BUTTON (BLUE)	17	633-201JKCP	WALL FLANGE
8	420-010JKRCF	SCREW, 10-32 UNC PH 1/2	18	665-116JKNF	SET SCREW
9	892-032KJKNF	VACUUM BREAKER DISC ASSEMBLY	19	897-013KJKCP	BRACE ROD ASSEMBLY
10	80-007JKNF	O-RING	20	173-006JKCP	FLAT HEAD WOOD SCREW (1)