



SYSTEMS THAT MAKE SENSE

A D V A N T A G E

Strut Systems  
Pre-Insulated Supports

# Armafix™ Clamps

**FAST • SIMPLE • COMPLETE**

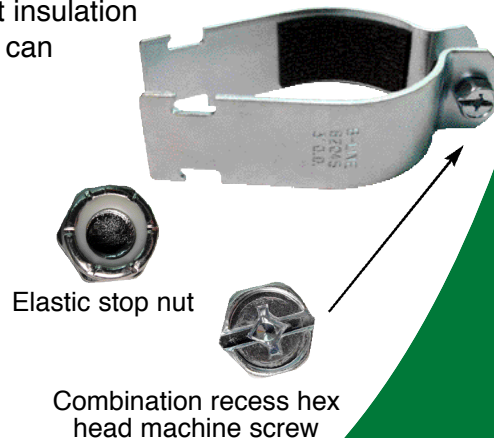
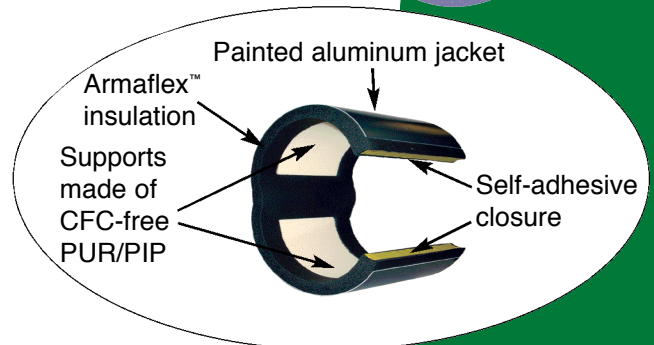
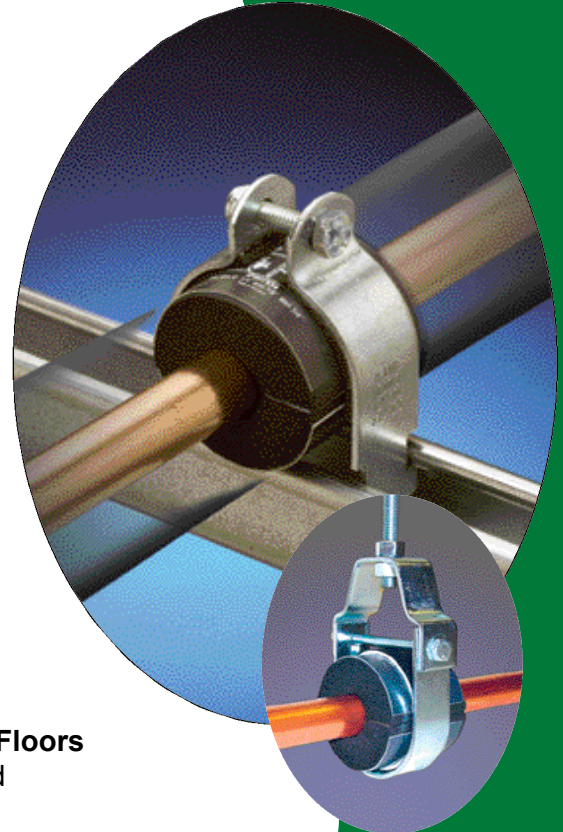
THE ONLY SOLUTION FOR A  
CONTINUOUS INSULATED PIPING SYSTEM

## Features

- **Prevent Condensation**  
Armaflex™ closed-cell elastomeric foam prevents the flow of moisture vapor.
- **Maintain Total Insulation System Integrity**  
Foam-to-foam bond prevents gaps in the insulation system. Thus, no “icing” at point of support.
- **Faster: Reduce Total Installed Costs**  
Eliminates cumbersome, time-consuming field modifications to seal insulation at the point of support.
- **Prevent Most Common Cause of Ceiling Damage & Wet Floors**  
No more water stained, sagging ceilings or wet floors caused by condensation drips at hanger locations.
- **Reduce Call Backs**  
Simple, lasting method for preventing compression at support locations.

The ability to **continuously** insulate tubing through the “point of support” has finally arrived. Cooper B-Line Armafix™ Clamp inserts are a quick, innovative alternative for this type of application compared to costly, time-consuming field methods. The engineered, “foam-to-foam” bonded solution provides optimum load bearing capability while protecting against insulation compression and condensation gaps that can compromise system integrity.

Special friction tape is installed on the inside of the clamp to inhibit insert slip. Clamp hardware includes: elastic stop nut to control vibration and a combination recess hex head machine screw for multi-driver flexibility.



www.cooperbline.com  
800-851-7415

**COOPER B-Line**

**BA155S**

Also available from Cooper B-Line

# Calcium Silicate Support Inserts

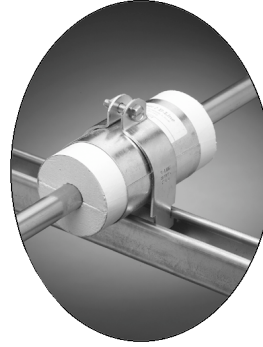
## Features:

**Material:** Asbestos-free, Hydrous Calcium Silicate Insulation with Pre-Galvanized steel jacket.

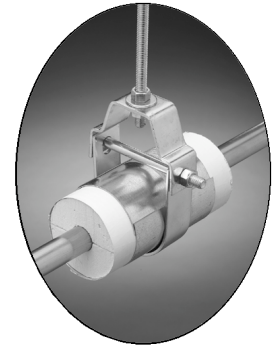
**Use:** Can be used with pipe hangers or strut clamps.

**Service:** Designed to provide a crush resistant insulation insert at pipe support points for both standard temperature and chilled water applications.

**Effectiveness:** Flame retardant, water and rot resistant, temperature range from ambient to 1200°F (649°C). Easily installed in a pipe hanger or mounted to strut.



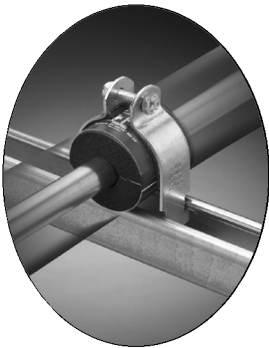
“Save on field labor costs”.



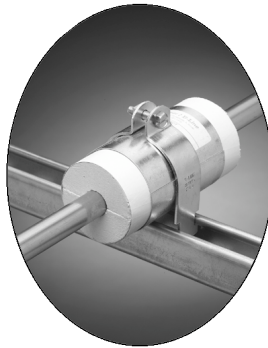
“Reduce Call backs to re-set pipe elevations”.

# Pre-Insulated Supports

For Closed Cell Foam or other Insulation Materials.



OR



Armafix™ Clamps

Calcium Silicate Inserts

Contact your Cooper B-Line Representative or Stocking Distributor for more information. Also see [www.cooperbline.com](http://www.cooperbline.com).

Affix Address Label Here

**COOPER B-Line**  
509 West Monroe Street  
Highland, Illinois 62249-0326