

COSTCO WHOLESALE

192nd. AVE. VANCOUVER, WA

JRT MECHANICAL INC.

15410 2.10B HANGER-ROD ATTACHMENTS

Fig. 331 - Turnbuckle

Size Range — 3/8" thru 2" machine thread

Material — Forged Steel

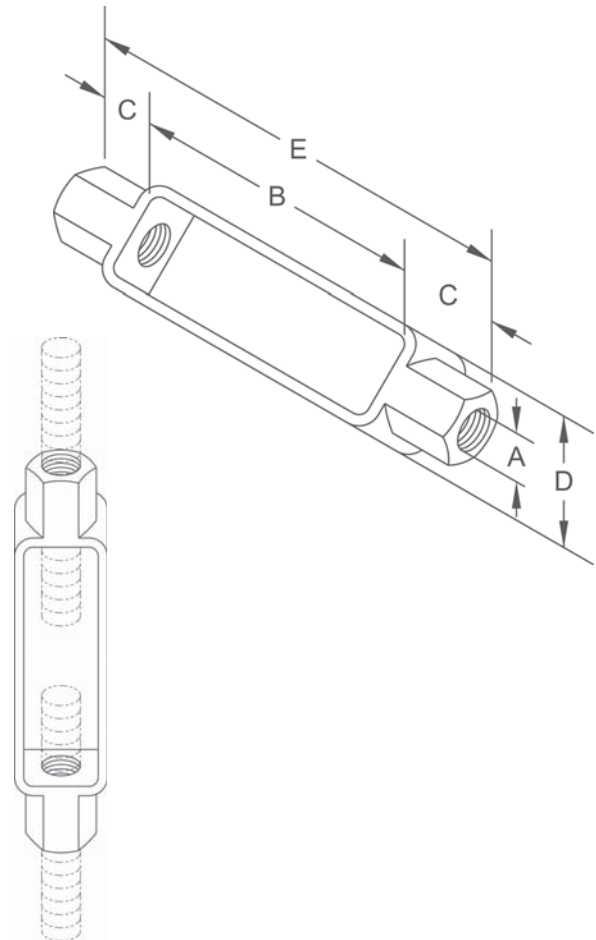
Function — Standard turnbuckle tapped right and left hand which provides 6" take up (3" rod take out).

Approvals — Conforms to Federal Specification WW-H-171E, Type 13, 3/8" thru 1½" rod, and Manufacturers Standardization Society SP-69, Type 13.

Finish — Plain

Note — Available in Electro-Galvanized and HDG finish.

Order By — Figure number, rod size and finish



Dimensions • Weights						
Rod Size A	B	C	D	E	Max. Rec. Load Lbs.	Approx. Wt./100
3/8	6	9/16	7/8	7 1/8	610	42
1/2	6	3/4	1 1/8	7 1/2	1130	65
5/8	6	15/16	1 3/8	7 7/8	1810	98
3/4	6	1 1/8	1 11/16	8 1/4	2270	145
7/8	6	1 5/16	1 9/16	8 5/8	3770	185
1	6	1 1/2	2 1/4	9	4960	260
1 1/8	6	1 9/16	2 5/8	9 1/8	6230	406
1 1/4	6	1 9/16	2 5/8	9 1/8	8000	400
1 1/2	6	1 7/8	3	9 3/4	11630	615
1 3/4	6	2 3/16	3 5/8	10 3/8	15690	980
2	6	2 1/2	4 3/16	11	20690	1400

15410 2.10C HANGER-ROD ATTACHMENTS

Fig. 330 - Weldless Steel Eye Nut

Size Range — 3/8 thru 2½" machine thread.

Material — Forged Steel

Quality Assurance — Conforms to the requirements of NCA 3800.

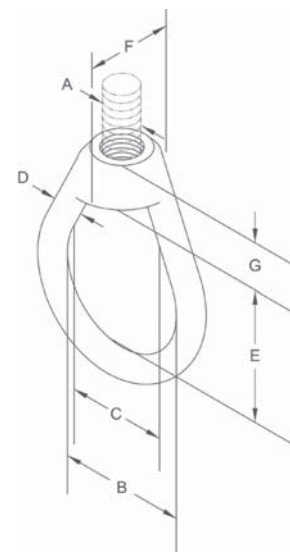
Threads — Tapped UNC Class 2B. Right hand threads are standard. Left hand threads supplied upon request.

Function — Used on piping installations where high strength and swivel action are required. Left hand tap is also available.

Approvals — Complies with Federal Specification WW-H-171E, Type 17 and Manufacturers Standardization Society SP-69, Type 17.

Finish — Plain

Note — Available in Electro-Galvanized and HDG finish



Dimensions • Weights

Rod Size A	B	C	D	E	F	G	Max. Rec. Load Lbs. 650°F	750°F	Approx. Wt./100
3/8	1½	1³/₁₆	1/2	2	1³/₈	11/16	610	540	63
1/2	1½	1³/₁₆	1/2	2	1³/₈	11/16	1130	1010	60
5/8	1½	1³/₁₆	1/2	2	1³/₈	11/16	1810	1610	59
3/4	1½	1³/₁₆	1/2	2	1³/₈	11/16	2710	2420	56
7/8	2	1¹¹/₁₆	3/4	2½	1¹⁵/₁₆	1	3770	3360	170
1	2	1¹¹/₁₆	3/4	2½	1¹⁵/₁₆	1	4960	4420	174
1 1/8	2½	1¹³/₁₆	1	3³/₈	2³/₈	1¼	6230	5560	373
1¼	2½	1¹³/₁₆	1	3³/₈	2³/₈	1¼	8000	7140	364
1½	2½	1¹³/₁₆	1	3³/₈	2³/₈	1¼	11630	10370	345
1¾	4	4	1½	6¼	4	2¼	15700	14000	1657
2	4	4	1½	6¼	4	2¼	20700	18460	1614
2¼	4	4	1½	6¼	4	2¼	27200	24260	1562
2½	4	4	1½	6¼	4	2¼	33500	29880	1506

15410 2.10D HANGER-ROD ATTACHMENTS

Fig. 333 - Extension Piece

Size Range — 3/8 thru 7/8" rod

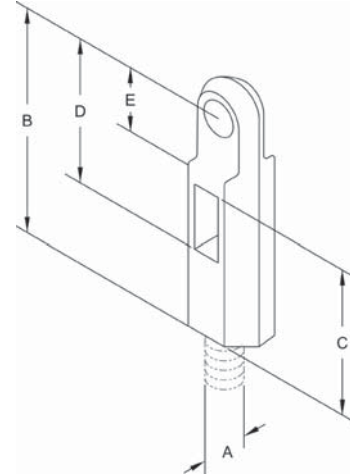
Material — Malleable Iron

Function — For use in attaching hanger rod to other attachments. (Use with fig. 329.)

Finish — Plain

Note — Available in Electro-Galvanized and HDG finish.

Order By — Figure number, rod size and finish



Dimensions • Weights

Pipe Size	Rod Size A	B	C	D	E	Max. Rec. Load Lbs.*	Approx. Wt./100
3/4 - 2	3/8	2 ¹ / ₁₆	9/16	1/2	1/2	610	20
2½ - 3½	1/2	2 ⁵ / ₁₆	11/16	5/8	1/2	1130	40
4 - 5	5/8	2 ⁷ / ₁₆	3/4	5/8	1/2	1550	44
6	3/4	2 ⁷ / ₈	7/8	5/8	1/2	2100	65
8 - 12	7/8	3	7/8	3/4	9/16	2350	78

* With minimum Safety Factor of 5 at maximum temperature of 450°F.

15410 2.10E HANGER-ROD ATTACHMENTS

Fig. 1 - Standard Clevis Hanger

 Component of State of
 California OSHPD Approved
 Seismic Restraints System


Size Range — Size 1/2" thru 36" pipe.

Material — Carbon Steel

Function — Recommended for the suspension of non-insulated pipe or insulated pipe with Fig. 220 shield.

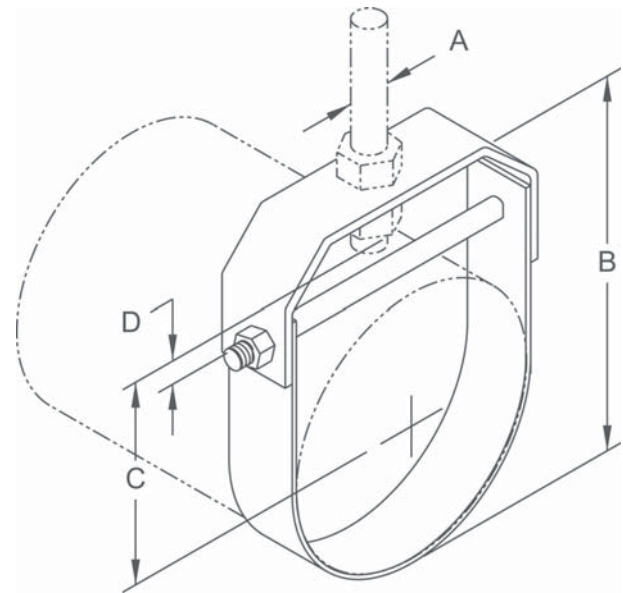
Note — When an oversized clevis is used, a pipe spacer should be placed over the cross bolt to assure that the lower U-strap will not move in on the bolt. When attaching seismic bracing to clevis hangers, a Fig. 1 CBS (cross bolt spacer) must be installed. See TOLCO® Seismic Restraint Approval Guidelines.

Approvals — Underwriters' Laboratories Listed in the USA (UL), Canada (cUL) 3/4" thru 8". Conforms to Federal Specification WW-H-171E, Type 1, and Manufacturers Standardization Society SP-69, Type 1. Also available to accommodate rod schedule per National Fire Protection Association (NFPA) Pamphlet 13. Included in our Seismic Restraints Catalog approved by the State of California Office of Statewide Health Planning and Development (OSHPD). For additional load, spacing and placement information relating to OSHPD projects, please refer to the TOLCO Seismic Restraint Systems Guidelines.

Maximum Temperature — 650°F

Finish — Plain

Note — Available in Electro-Galvanized and HDG finish or Stainless Steel.



Dimensions • Weights

Pipe Size	Rod Size A		B	C	D	Max. Rec. Load Lbs.	Approx. Wt./100
	STD	NFPA					
1/2	3/8	3/8	2 ¹ / ₁₆	1 ³ / ₁₆	1	610	36
3/4	3/8	3/8	2 ⁷ / ₁₆	1 ⁷ / ₈	1	610	38
1	3/8	3/8	3 ¹ / ₄	2 ¹ / ₁₆	1	610	42
1 ¹ / ₄	3/8	3/8	3 ⁹ / ₁₆	2 ¹ / ₄	1	610	46
1 ¹ / ₂	3/8	3/8	3 ⁷ / ₈	2 ³ / ₈	1	610	49
2	3/8	3/8	4 ⁷ / ₁₆	2 ³ / ₄	1	610	55
2 ¹ / ₂	1/2	3/8	5 ⁵ / ₁₆	3 ¹ / ₄	1	1130	124
3	1/2	3/8	5 ¹⁵ / ₁₆	3 ¹ / ₂	1 ¹ / ₄	1130	140
3 ¹ / ₂	1/2	3/8	6 ⁷ / ₁₆	3 ³ / ₄	1 ¹ / ₄	1130	152
4	5/8	3/8	7 ³ / ₈	4 ¹ / ₄	1 ¹ / ₂	1430	190
5	5/8	1/2	8 ¹⁵ / ₁₆	5 ¹ / ₄	1 ¹ / ₂	1430	235
6	3/4	1/2	9 ¹³ / ₁₆	5 ¹ / ₂	1 ¹ / ₂	1940	317
8	3/4	1/2	12 ⁹ / ₁₆	7 ¹ / ₈	2	2000	428
10	7/8	5/8	16 ¹ / ₄	9 ⁵ / ₈	3 ¹ / ₄	3600	918
12	7/8	5/8	18 ⁹ / ₁₆	10 ¹³ / ₁₆	3 ¹ / ₈	3800	1086
14	1	—	20 ³ / ₄	12 ³ / ₈	4	4200	1267
16	1	—	22 ⁷ / ₈	13 ³ / ₁₆	3 ³ / ₄	4600	1930
18	1	—	25 ³ / ₄	15 ⁹ / ₃₂	4 ⁷ / ₁₆	4800	2264
20	1 ¹ / ₄	—	28 ¹³ / ₁₆	17 ¹ / ₁₆	5 ³ / ₁₆	4800	3531
*24	1 ¹ / ₄	—	32 ¹ / ₈	18 ¹ / ₄	4 ⁷ / ₁₆	4800	4431
*30	1 ¹ / ₄	—	38 ⁷ / ₈	21 ⁷ / ₈	5	6000	6940
*36	1 ¹ / ₂	—	48	27 ³ / ₄	5 ³ / ₄	9500	18103

*Furnished with pipe spacer to support maximum load rating