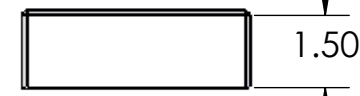
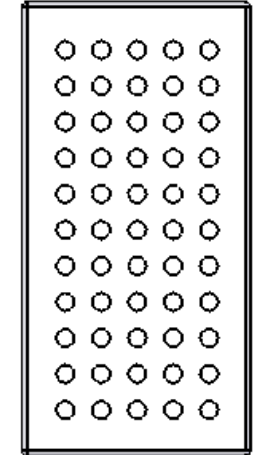
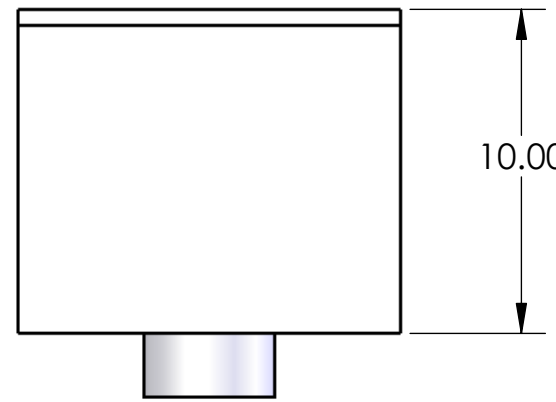
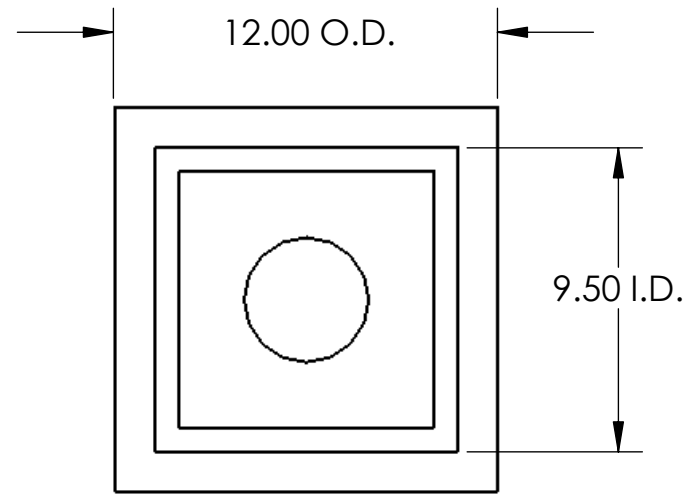


AVAILABLE
OUTLET SIZES: 2", 3", 4", 5", 6"

OUTLET SIZE _____

CUSTOMER APPROVAL _____



12 Ga. PERFORATED
1/2 GRATE

15400 2.5 DRAINS D-4 FLOOR SINK DRAIN

STAINLESS STEEL
DOME STRAINER

INTERNAL FLANGE

14 Ga. STAINLESS STEEL
DRAIN BODY

2", 3" OR 4"
OUTLET

ANCHOR
TAB

*****ALL DIMENSIONS ARE NOMINAL DIMENSIONS
AND ARE SUBJECT TO CHANGE*****

StainlessDrains.com
888.785.2345

PROPRIETARY AND CONFIDENTIAL
THE INFORMATION CONTAINED IN THIS
DRAWING IS THE SOLE PROPERTY OF
STAINLESS DRAINS. ANY
REPRODUCTION IN PART OR AS A WHOLE
WITHOUT THE WRITTEN PERMISSION OF
STAINLESS DRAINS IS PROHIBITED.

		UNLESS OTHERWISE SPECIFIED:		NAME	DATE
		DIMENSIONS ARE IN INCHES		DRAWN	AM
		TOLERANCES:		CHECKED	SD
		FRACTIONAL ±		ENG APPR.	
		ANGULAR: MACH ± BEND ±		MFG APPR.	
		TWO PLACE DECIMAL ±		Q.A.	
		THREE PLACE DECIMAL ±		COMMENTS:	
		INTERPRET GEOMETRIC TOLERANCING PER:			
		MATERIAL			
NEXT ASSY	USED ON	FINISH			
APPLICATION		DO NOT SCALE DRAWING			

StainlessDrains.com
a division of East Creek Corp
P. O. Box 1278 Greenville, TX 75403
Toll Free 888-785-2345

TITLE:
CSDSINK12X12X10-1/2PIFDS2

SIZE	DWG. NO.	REV
B		