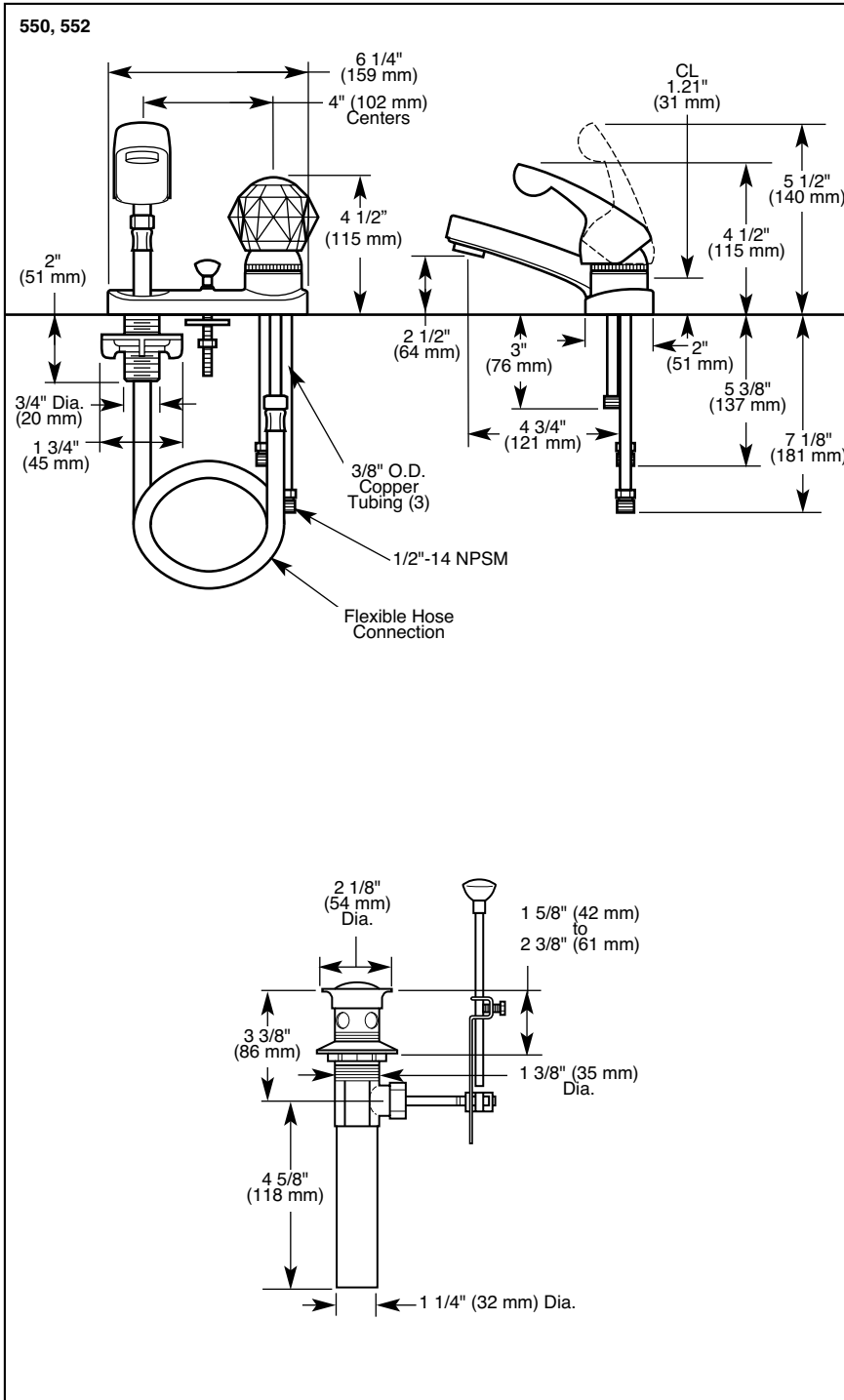


Submitted Model No.: \_\_\_\_\_

Specific Features: \_\_\_\_\_



# DELTA LAVATORY FAUCETS

- Single Handle
- Handi-Lav® Pull-out Spout Series
- Deck Mount
- 3 Hole Sink Applications
- 4" Centerset



UL Listed to US and Canadian Safety Standards 21PL

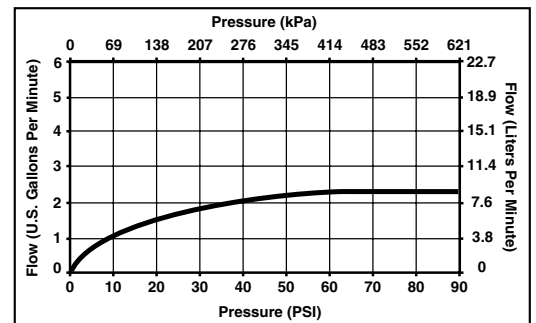


### COMPLIES WITH:

- ASME A112.18.1M-1996
- CSA B125-1993
- Indicates ADA compliance to CABO/ANSI A117.1-1992
- IAPMO Listed
- CSA Certified
- City of L.A. approved

### STANDARD SPECIFICATIONS:

- Single handle lavatory deck faucets for exposed mounting on 3 hole sinks.
- 4" (102 mm) centerset.
- Solid brass fabricated body.
- 4 3/4" (121 mm) long pull-out spout.
- Pull-out spout operates in aerate mode.
- Spout is connected to valve body with a 42" (1067 mm) hose that extends to 33" (838 mm) usable length.
- Each supply line has a back siphonage check valve. Spout contains a backflow check valve. Valve has an anti-siphon atmospheric vent in the stainless steel ball.
- Clear knob or lever handle.
- Control mechanism shall be of the rotating stainless steel ball type with replaceable non-metallic seats operating in stainless steel lined sockets.
- Lever control handle shall return to neutral position when valve is turned off.
- 3/8" O.D. straight, staggered copper supply tubes with 1/2"-14 NPSM adapters.
- Models have metal drain with pop-up type fitting with plated flange and stopper.



Delta reserves the right (1) to make changes in specifications and materials, and (2) to change or discontinue models, both without notice or obligation. Dimensions are for reference only.

Standard Features	550	550-PB	552
Washerless	◆	◆	◆
Three Hole Installation	◆	◆	◆
4" (102 mm) Centerset	◆	◆	◆
4 3/4" (121 mm) long Pull-Out Spout	◆	◆	◆
Vacuum Breaker Ball	◆	◆	◆
Lever Handle	♿	♿	
Clear Knob Handle			◆
42" (1067 mm) Long Hose Extends 33" (838 mm)	◆	◆	◆
3/8" O.D. Straight, Staggered Copper Supply Tubes 5 3/8" (137 mm) and 7 1/8" (181 mm) long with 1/2"-14 NPSM adapters.	◆	◆	◆
Metal Pop-Up Drain	◆	◆	◆
Chrome Finish	◆		◆
<i>Brilliance</i> ™ Polished Brass Finish		◆	



Indianapolis, Indiana 46280  
A Division of Masco Corporation of Indiana  
© 2001 Masco Corporation of Indiana