

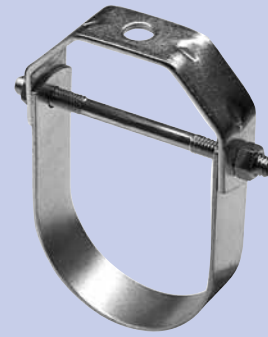


Clevis Hanger 401

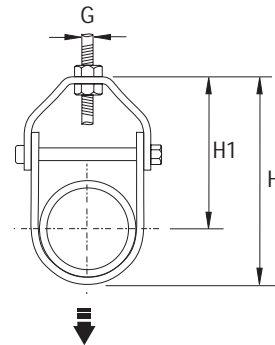
Heavy duty

- Surface finish: electro zinc plated
- 2 1/2" bis 8" UL listed and FM approved
- for pipe diameter 1" - 30"

N°	Ø "	G Ømm	H mm	H1 mm		FM UL	P		kg/1
179420	1	10	69	51,6	2750		1	50	0,17
179421	1 1/4	10	84	61	2750		1	50	0,20
179422	1 1/2	10	100	75	2750		1	50	0,22
179423	2	10	114	83	2750		1	50	0,26
179424	2 1/2	12	133	95	5100	FM + UL	1	30	0,50
179425	3	12	152	101,6	5100	FM + UL	1	25	0,56
179426	4	16	197	137	6350	FM + UL	1	25	0,78
179427	5	16	248	173	6350	FM + UL	1	25	1,00
179428	6	19	298	210	8600	FM + UL	1	10	1,39
179429	8	22	356	341	9070	FM + UL	1	10	2,18
179430	10	22	419	277	16300		1	1	3,52
179431	12	22	473	305	17230		1	1	4,63
179432	14	27	552	368	19050		1	1	6,21
179433	16	27	610	400	20860		1	1	8,94
179434	18	30	679	445	21770		1	1	11,45
179435	20	33	762	499	21770		1	1	19,28
179436	24	33	867	552	21770		1	1	22,68
179437	30	33	1016	626	27210		1	1	31,52





2 1/2 - 8":



Clevis Hanger 410

Clevis Hanger #410 light duty

- Surface finish: electro zinc plated
- for pipe diameter 1" - 12"

N°	Ø "	G Ømm	H mm	H1 mm		P		kg/1
179400	1	10	102	72	1130	1	50	0,06
179401	1 1/4	10	108	82,6	1130	1	50	0,08
179402	1 1/2	10	114	82,6	1130	1	50	0,10
179403	2	10	127	90,5	1130	1	50	0,12
179404	2 1/2	12	138	95,3	1590	1	30	0,24
179405	3	12	152	101,6	1590	1	25	0,28
179406	4	16	208	146	1810	1	25	0,41
179407	5	16	254	180	8160	1	25	0,81
179408	6	19	282	194	8800	1	10	1,42
179409	8	19	355	242	9980	1	10	1,93
179410	10	22	420	278	16000	1	1	3,27
179411	12	22	473	305	17100	1	1	3,74

