

SANITARY FLOOR SINKS

300 Series

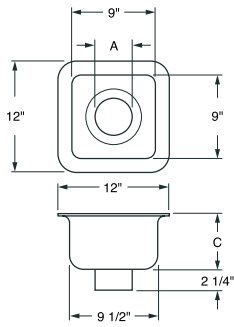
Acid Resistant Enamel (ARE) Floor Sinks, Series 320-345

TAG _____

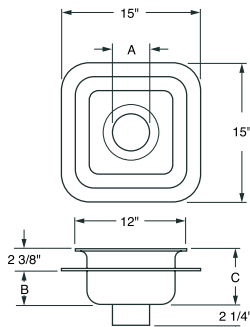
Product Description: Recommended for sanitary installations. ARE floor sinks consist of a cast iron receptor (body) with a white acid resistant enamel interior and anti-splash dome strainer. Floor sinks are available with or less flange.

Features and Benefits:

- Porcelain enamel, acid resistant, coated cast iron body and grate
- Available with or less flange
- Suitable for sanitary areas
- Grates available in full, 1/2 and 3/4 variations
- Body includes anti-splash dome strainer



Less Flange



With Flange



Series 320-340



Series 320-10



Series 325-345

| Series Number | Description | Outlet Size | Outlet Type | B | C |
|---------------|--|-------------|-------------|--------|---------|
| 320-Y02 | 12" Square Body Less Flange, 6" deep | 2" | No-Hub | - | 6" |
| 320-Y03 | 12" Square Body Less Flange, 6" deep | 3" | No-Hub | - | 6" |
| 320-Y04 | 12" Square Body Less Flange, 6" deep | 4" | No-Hub | - | 6" |
| 330-Y02 | 12" Square Body Less Flange, 8" deep | 2" | No-Hub | - | 8" |
| 330-Y03 | 12" Square Body Less Flange, 8" deep | 3" | No-Hub | - | 8" |
| 330-Y04 | 12" Square Body Less Flange, 8" deep | 4" | No-Hub | - | 8" |
| 340-Y02 | 12" Square Body Less Flange, 10" deep | 2" | No-Hub | - | 10" |
| 340-Y03 | 12" Square Body Less Flange, 10" deep | 3" | No-Hub | - | 10" |
| 340-Y04 | 12" Square Body Less Flange, 10" deep | 4" | No-Hub | - | 10" |
| 325-Y02 | 12" Square Body with Flange, 6" deep | 2" | No-Hub | 4-1/8" | 6-1/2" |
| 325-Y03 | 12" Square Body with Flange, 6" deep | 3" | No-Hub | 4-1/8" | 6-1/2" |
| 325-Y04 | 12" Square Body with Flange, 6" deep | 4" | No-Hub | 4-1/8" | 6-1/2" |
| 335-Y02 | 12" Square Body with Flange, 8" deep | 2" | No-Hub | 6-1/8" | 8-1/2" |
| 335-Y03 | 12" Square Body with Flange, 8" deep | 3" | No-Hub | 6-1/8" | 8-1/2" |
| 335-Y04 | 12" Square Body with Flange, 8" deep | 4" | No-Hub | 6-1/8" | 8-1/2" |
| 345-Y02 | 12" Square Body with Flange, 10" deep | 2" | No-Hub | 8-1/8" | 10-1/2" |
| 345-Y03 | 12" Square Body with Flange, 10" deep | 3" | No-Hub | 8-1/8" | 10-1/2" |
| 345-Y04 | 12" Square Body with Flange, 10" deep | 4" | No-Hub | 8-1/8" | 10-1/2" |
| Series Number | Available Grates | | | | |
| 320-10 | Floor Sink (one piece) ARE Grate, full | | | | |
| 320-11 | Floor Sink (two piece) ARE Grate, 1/2 | | | | |
| 320-12 | Floor Sink (one piece) ARE Grate, 1/2 | | | | |
| 320-13 | Floor Sink (one piece) ARE Grate, 3/4 | | | | |

NOTE: Dimensional data is subject to manufacturing tolerances and change without notice.