

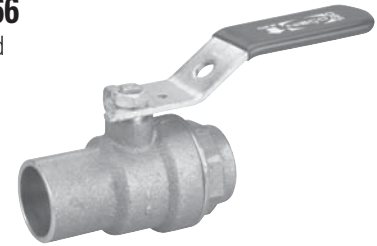
Bronze Ball Valves

Two-Piece Body • Standard Port • Stainless Steel Trim •
TFE Seats • Blowout-Proof Stem

400 PSI/27.6 Bar Non-Shock Cold Working Pressure



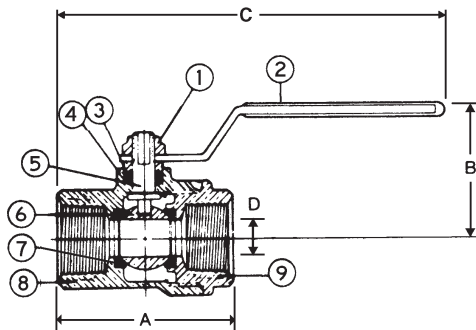
T-580-66
Threaded



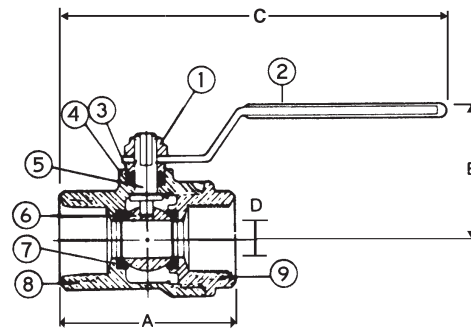
S-580-66
Solder

MATERIAL LIST

PART	SPECIFICATION
1. Handle Nut	Stainless Steel 300 Series
2. Handle	Zinc Plated Steel Clear Chromate Plastisol Coated
3. Packing Gland	Brass ASTM B 16 Alloy C36000
4. Packing	TFE
5. Stem	Stainless Steel ASTM A 276 Type 316
6. Ball (Vented)	Stainless Steel ASTM A 276 Type 316 or ASTM A 351 Type CF8M
7. Seat Rings	TFE
8. Body	Bronze ASTM B 584 Alloy C84400 or Brass ASTM B 124 Alloy C37700
9. Body End Piece	Bronze ASTM B 584 Alloy C84400 or Brass ASTM B 124 Alloy C37700



T-580-66
NPT x NPT



S-580-66
C x C

DIMENSIONS—WEIGHTS—QUANTITIES

Size	Dimensions										T-580-66		S-580-66		Master Ctn. Qty.
	T-580-66		S-580-66		T-580-66		S-580-66		D Port		T-580-66		S-580-66		
In. mm.	A In. mm.	A In. mm.	B In. mm.	C In. mm.	C In. mm.	D Port In. mm.	D Port In. mm.	T-580-66 Lbs.	T-580-66 Kg.	S-580-66 Lbs.	S-580-66 Kg.				
½	15	2.00 51	1.94 49	1.56 40	4.88 124	4.84 123	.38 10	.50	.23	.50	.23	100			
¾	20	2.28 58	2.63 67	1.72 44	5.00 127	5.19 132	.50 13	.70	.32	.70	.32	100			
1	25	2.88 73	3.21 82	2.06 52	6.06 154	6.28 160	.75 19	1.20	.54	1.30	.59	50			
1¼	32	3.41 87	3.81 97	2.31 59	6.34 161	6.56 167	1.00 25	1.80	.82	1.60	.73	40			
1½	40	3.75 95	4.25 108	2.81 71	8.56 217	8.81 224	1.25 32	2.90	1.32	2.50	1.14	20			
2	50	4.44 113	5.21 132	3.06 78	8.88 226	9.25 235	1.50 38	4.30	1.95	3.60	1.70	10			

S-580 series to be soft soldered into lines using solder with the melting point not exceeding 470° F. Higher temperature solders will damage the seat material.