

BUTTERFLY VALVE

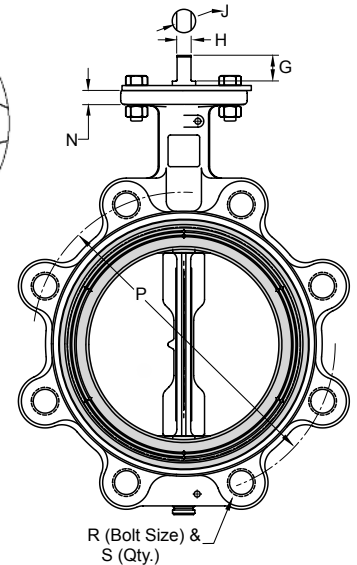
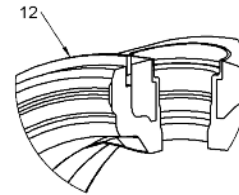
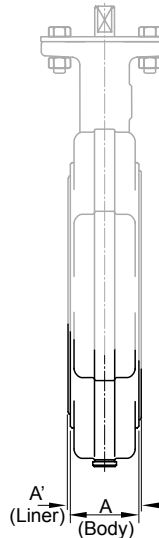
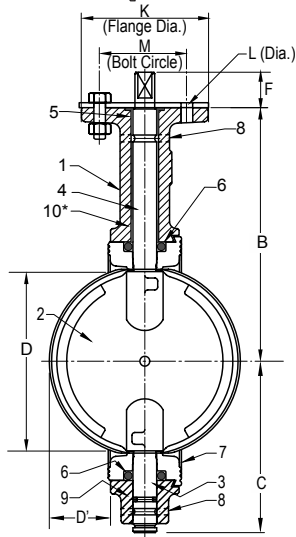
2"-12" - 200 PSI (1380 kPa)

6200 SERIES-REV. D

SPECIFICATIONS

MSS SP-67
API-609

Bi-Directional Dead End Service to 200 PSI Max.
Buna & EPDM Only. All Others 150 PSI Uni-Directional.
Field Repairable.



ITEM	PARTS NAME	MATERIAL
1	BODY	CAST IRON-ASTM A126 CL B
		CAST IRON EPOXY COATED
		CAST IRON-NYLON COATED
		DUCTILE IRON-ASTM A536
		DUCTILE IRON -EPOXY COATED
		DUCTILE IRON-NYLON COATED
		NP DUCTILE IRON-ASTM ASTM A536
2	DISC	ALUMINUM BRONZE- ASTM A351 B 148
		STAINLESS STEEL ASTM A351 CF8M
		NYLON COATED DUCTILE IRON EPOXY COATED DUCTILE IRON
3	BOTTOM STEM	STAINLESS STEEL TYPE 416
		STAINLESS STEEL 316 (2)
4	TOP STEM	STAINLESS STEEL TYPE 416 STAINLESS STEEL 316 (2)
5	TOP BEARING	THERMOSET POLYMER
6	SEAL	EPDM,BUNA,VITON (1)
7	LINER	BUNA
		EPDM
		VITON
		HYPALON
		NEOPRENE BLACK-FDA
		NEOPRENE WHITE-FDA
		TEFLON OVER BUNA (150# WOG)
8	ROLL PIN	STAINLESS STEEL
9	STEM SEAL	EPDM,BUNA,VITON (1)
10 *	LOWER BEARING	THERMOSET POLYMER
11	OPERATOR	LEVER HANDLE (EPOXY COATED LEVER)
		GEAR OPERATOR
		GEAR OPERATOR WITH MEMORY STOP
		GEAR OPERATOR WITH LOCK
		ACTUATOR-AIR/AIR ACTUATOR-AIR/SPRING ACTUATOR-ELECTRIC
12 **	RETAINING RING	1066 SPRING STEEL (65Mn)

DIMENSIONS

	INCHES	2	2-1/2	3	4	5	6	8	10	12
	mm	50	65	80	100	125	150	200	250	300
A (Body)	INCHES	1.69	1.81	1.81	2.07	2.19	2.19	2.38	2.69	3.06
	mm	42.9	46.1	46.0	52.5	55.6	55.6	60.3	68.3	78.0
A' (Liner)	INCHES	1.82	1.94	1.94	2.20	2.32	2.31	2.51	2.82	3.21
	mm	46.1	49.1	49.1	55.8	58.8	58.7	63.6	71.5	82.0
B	INCHES	5.50	6.00	6.25	7.00	7.53	8.00	9.38	10.19	12.06
	mm	139.7	152.4	158.8	177.8	191.3	203.2	238.1	258.8	306.4
C	INCHES	3.06	3.31	3.75	4.25	4.94	5.56	6.56	7.88	9.25
	mm	77.8	84.1	95.3	108.0	125.4	141.3	166.7	200.0	235.0
D (Chord Dia)	INCHES	1.49	2.01	2.64	3.67	4.71	5.66	7.72	9.70	11.68
	mm	37.8	51.1	67.1	93.2	119.6	143.8	196.1	246.4	296.7
D' (Intrusion)	INCHES	0.28	0.44	0.69	1.06	1.50	1.94	2.84	3.69	4.50
	mm	7.1	11.1	17.5	27.0	38.1	49.2	72.2	93.7	114.3
F	INCHES	1.13	1.13	1.13	1.13	1.13	1.13	1.50	1.50	1.50
	mm	28.6	28.6	28.6	28.6	28.6	28.6	38.1	38.1	38.1
G	INCHES	0.81	0.81	0.81	0.81	0.81	0.81	1.06	1.06	1.06
	mm	20.6	20.6	20.6	20.6	20.6	20.6	27.0	27.0	27.0
H	INCHES	0.35	0.35	0.35	0.40	0.40	0.44	0.53	0.71	0.71
	mm	8.9	8.9	8.9	10.2	10.2	11.2	13.5	18.0	18.0
J	INCHES	0.50	0.50	0.50	0.56	0.56	0.62	0.75	1.00	1.00
	mm	12.6	12.6	12.6	14.2	14.2	15.8	19.0	25.4	25.4
K	INCHES	4	4	4	4	4	4	6	6	6
	mm	101.6	101.6	101.6	101.6	101.6	101.6	152.4	152.4	152.4
L (Dia)	INCHES	0.44	0.44	0.44	0.44	0.44	0.44	0.56	0.56	0.56
	mm	11.1	11.1	11.1	11.1	11.1	11.1	14.3	14.3	14.3
M	INCHES	3.25	3.25	3.25	3.25	3.25	3.25	5.00	5.00	5.00
	mm	82.6	82.6	82.6	82.6	82.6	82.6	127.0	127.0	127.0
N	INCHES	0.44	0.44	0.44	0.44	0.44	0.44	0.50	0.50	0.50
	mm	11.1	11.1	11.1	11.1	11.1	11.1	12.7	12.7	12.7
P	INCHES	4.75	5.50	6.00	7.50	8.50	9.50	11.75	14.25	17.00
	mm	120.7	139.7	152.4	190.5	215.9	241.3	298.5	362.0	431.8
R		5/8-11	5/8-11	5/8-11	5/8-11	3/4-10	3/4-10	3/4-10	7/8-9	7/8-9
S		4	4	4	8	8	8	8	12	12

(1) VITON O-RINGS ARE USED WITH HYPALON, NEOPRENE, AND TEFLON LINERS. * PROVIDED ON 8", 10" AND 12".

(2) 316 STEM USED WITH CF8M DISC

** EPDM AND BUNA LINER ONLY

The information presented on this sheet is correct at the time of publication. Hammond Valve reserves the right to change design, and/or material specifications without notice. For the Installation, Operation and Maintenance Manual (IOM) see the engineering section on our website. For the most current information access www.hammondvalve.com

BFV-8

