

# "8901"

# 1/4" - 3"

**BRASS BALL VALVE  
TWO-PIECE, FULL-PORT  
600 WOG / 150 SWP  
THREADED ENDS\***

**MSS-SP110**  
NSF61-8  
ASME A112.4.14

**SA**  
C US  
ANSI Z 21.15-1997 Z CGA 9.1-M97  
3-88 IAS, CR91-002  
ASME 16.44-2002  
CAN/CGA-3.16-M88

**UL** US  
C  
UL 125  
UL 842  
Subject 258

**FM**  
APPROVED  
1140

1/4" through 2" Only

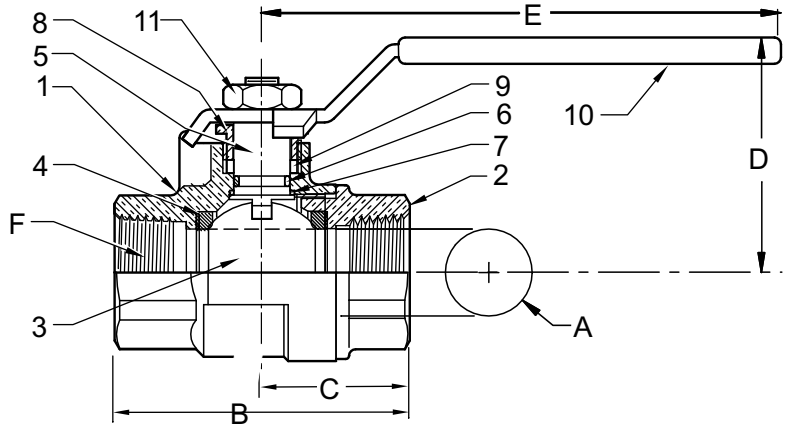
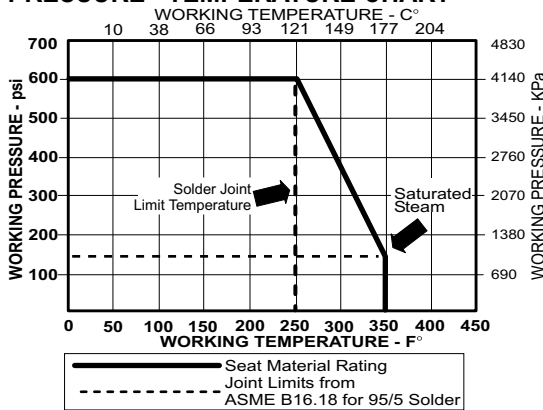
## MATERIALS LIST

ITEM	PART	MATERIALS	ASTM SPEC.
1	Body	Brass, Forged	B283
2	Tailpiece	Brass, Forged	B283
3	Ball	Brass w/ Chrome Plating	B283
4	Ball Seal	PTFE	Commercial
5	Stem	Brass	B124
6	O-Ring	Buna-N	D2006
7	Thrust Washer	PTFE	Commercial
8	Gland Nut	Brass	B124
9	Packing	PTFE	Commercial
10	Handle	Zinc Plated Steel	Commercial
11	Handle Nut	Zinc Plated Steel	Commercial

**CLASSIFIED**  
**UL**  
ANSI / NSF 61  
BALL VALVE  
9EA0  
**WATER QUALITY**

\*Also Available 8901-07  
(Locks only in closed position)

## PRESSURE - TEMPERATURE CHART



## DIMENSIONS

Valve Size	UNITS	1/4"	3/8"	1/2"	3/4"	1"	1-1/4"	1-1/2"	2"	2-1/2"	3"
A	INCHES	.39	.39	.51	.76	1.00	1.26	1.50	2.00	2.48	2.95
	mm	9.9	9.9	12.7	19.3	25.0	32.0	38.1	51.0	63	74.9
B	INCHES	1.87	1.87	2.25	2.62	3.06	3.5	3.75	4.38	5.16	6
	mm	47	47	57	67	78	89	95	111	131.1	152.4
C	INCHES	0.95	0.95	1.12	1.31	1.91	2.21	1.87	2.19	2.58	3
	mm	24	24	61	33	49	56	47	56	65.5	76.2
D	INCHES	1.42	1.42	1.46	1.93	2.10	2.33	2.52	2.96	3.94	4.37
	mm	36	36	37	49	53	59	64	75	100.1	111
E	INCHES	3.14	3.14	3.14	4.35	4.35	5.00	5.00	6.90	7.87	7.87
	mm	80	80	80	110	110	127	127	175	199.9	199.9
F	THREAD SIZE	1/4" NPT	3/8" NPT	1/2" NPT	3/4" NPT	1" NPT	1-1/4" NPT	1-1/2" NPT	2" NPT	2-1/2" NPT	3" NPT
	Cv	12	12	18	40	72	112	161	287	448	645
TORQUE	in-lb	16	16	19	58	69	89	124	210	445	563
	N.m	1.8	1.8	2.1	6.5	7.8	10	14	24		
WEIGHT	lbs	0.33	0.34	0.47	0.89	1.24	1.66	2.34	4.94	7.4	10.47
	Kg	.149	.155	.213	.403	.565	.755	1.064	2.245	3.35	4.75

Rev. 6

The information presented on this sheet is correct at the time of publication. Hammond Valve reserves the right to change design, and/or material specifications without notice. For the Installation, Operation and Maintenance Manual (IOM) see the engineering section on our website. For the most current information access [www.hammondvalve.com](http://www.hammondvalve.com)

BV-23



# "8911"

# 1/2" - 3"

**BRASS BALL VALVE  
TWO PIECE, FULL PORT  
600 PSIG WOG / 150 PSIG SWP \*  
SOLDERED ENDS**

FED. SPEC. WW-V-35C II, BZ, 3, c  
MSS SP-110  
ASME A112.4.14

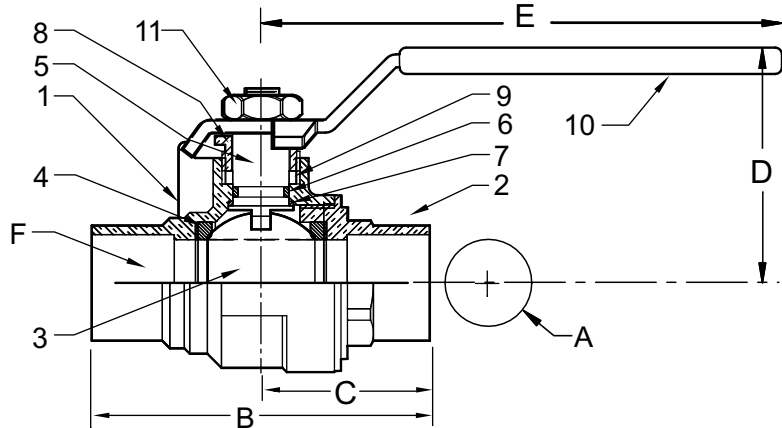


ANSI / NSF 61  
BALL VALVE  
9EAO

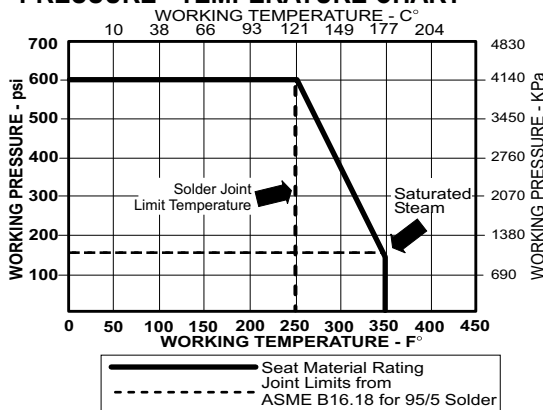
**WATER QUALITY**

## MATERIALS LIST

ITEM	PART	MATERIALS	ASTM/SPEC
1	Body	Brass, Forged	B283
2	Tailpiece	Brass, Forged	B283
3	Ball	CP Brass Ball	B283
4	Ball Seal	PTFE	Commercial
5	Stem	Brass	B124
6	O-Ring	Buna-N	D2006
7	Thrust Washer	PTFE	Commercial
8	Gland Nut	Brass	B124
9	Packing	PTFE	Commercial
10	Handle	Zinc Plated Steel	Commercial
11	Handle Nut	Zinc Plated Steel	Commercial



## PRESSURE - TEMPERATURE CHART



VACUUM SERVICE TO 29 INCHES Hg.

Valve Size	UNITS	1/2"	3/4"	1"	1-1/4"	1-1/2"	2"	2-1/2"	3"
A	INCHES	.50	.76	1.00	1.26	1.50	2.00	2.48	2.95
	mm	12.7	19.3	25.0	32.0	38.1	51.0	63.0	74.9
B	INCHES	2.28	3.1	3.56	4.13	4.64	5.75	7.25	8.25
	mm	58	79	90	105	118	146	131.1	152.4
C	INCHES	1.14	1.55	1.78	2.06	2.32	2.87	3.62	4.12
	mm	29	39	45	52	59	73	92.1	104.7
D	INCHES	1.46	1.93	2.10	2.33	2.52	2.96	3.94	4.37
	mm	37	49	53	59	64	75	100.1	111.0
E	INCHES	3.14	4.35	4.35	5.00	5.00	6.90	7.87	7.87
	mm	80	110	110	127	127	175	199.9	199.9
F	TUBE SIZE	.63	.88	1.13	1.38	1.63	2.13	2.63	3.13
Cv		18	40	72	112	161	287	448	645
TORQUE	in-lb	19	58	69	89	124	210	445	563
	N.m	2.1	6.5	7.8	10	14	24		
WEIGHT	lbs	0.40	0.82	1.15	1.53	2.23	4.61	10.00	13.00
	Kg	.180	.370	.521	.696	1.012	2.092	4.54	5.90

Rev. 3

The information presented on this sheet is correct at the time of publication. Hammond Valve reserves the right to change design, and/or material specifications without notice. For the Installation, Operation and Maintenance Manual (IOM) see the engineering section on our website. For the most current information access [www.hammondvalve.com](http://www.hammondvalve.com)

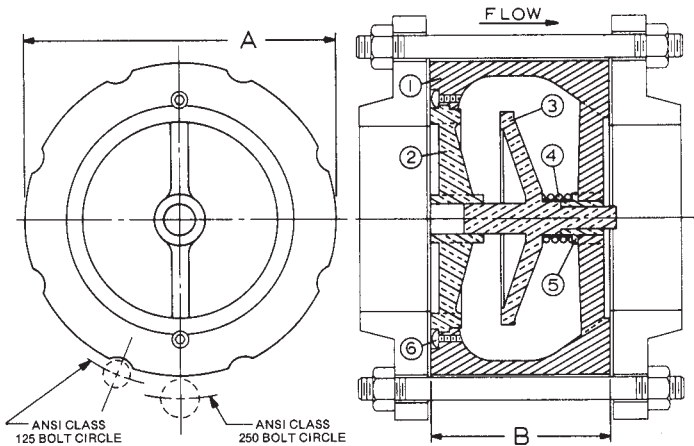


# SILENT CHECK VALVES IR9253\*

## WAFER STYLE • SEMI-STEEL BODY

### 125 LB. CLASS • BRONZE TRIM\*\*

Intended For Liquid Service Only.



#### MATERIAL LIST

NO.	PART	MATERIAL
1	Body	Cast Iron
2	Seat	Bronze
3	Plug	Bronze
4	Spring	Stainless Steel
5	Bushing	Bronze
6	Screw	Stainless Steel

#### DIMENSIONS - INCHES / MILLIMETERS

Units	Size	Weight Lbs.	A	B	C <sub>v</sub>
<b>SIZES 2" THRU 6" ARE COMBINATION ANSI CLASS 125 AND 250, VALVES USE ANSI CLASS 125</b>					
Inches	8	86	13.38	6.50	900
mm	203.20		339.73	165.10	
Inches	10.00	137	16.00	8.25	1450
mm	254.00		406.40	209.55	

#### PRESSURE TEMPERATURE RATINGS

TEMP. DEG. F.	MAX., NON-SHOCK SERVICE PRESS.			
	ANSI B16.1 FLG. RATINGS			
	125 LB CLASS		250 LB CLASS	
	2" - 12"	14" - 42"	2" - 12"	11" - 42"
0° - 150°	200	150	400	300
200°	190	135	370	280

TEST PRESSURE	300	230	600	450
---------------	-----	-----	-----	-----

NOTE: Stainless Steel trim recommended for temperatures 180° - 200° F.

#### DIMENSIONS - INCHES / MILLIMETERS

Units	Size	Weight Lbs.	A	B	C <sub>v</sub>
Inches	2	6	4.25	2.63	66
mm	50.80		107.95	66.68	
Inches	2 1/2	7	5.00	2.88	88
mm	63.50		127.00	73.03	
Inches	3	12	5.75	3.13	130
mm	76.20		146.05	79.38	
Inches	4	18	7.00	4.00	228
mm	101.60		177.80	101.60	
Inches	5	27	8.38	4.75	350
mm	127.00		212.73	120.65	
Inches	6	42	9.75	5.50	520
mm	152.40		247.65	139.70	
Inches	8	85	13.38	6.50	900
mm	203.20		339.73	165.10	
Inches	10	146	16.00	8.25	1450
mm	254.00		406.40	209.55	

Rev. 3

\*International Valve

\*\*We reserve the right to substitute stainless steel trim.

BETTER AT EVERY TURN



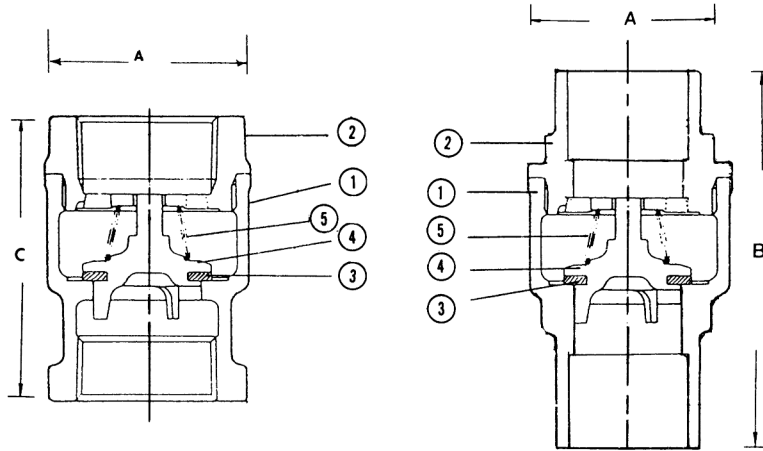
**HAMMONDVALVE**  
www.hammondvalve.com

The information presented on this sheet is correct at the time of publication. Hammond Valve reserves the right to change design, and/or material specifications without notice. For the Installation, Operation and Maintenance Manual (IOM) see the engineering section on our website. For the most current information access [www.hammondvalve.com](http://www.hammondvalve.com)

# BRONZE SPRING CHECK VALVE

# 943 & 947

250 WOG



**943 Threaded**

**947 Solder**

DIMENSIONS (INCHES)				Approx. Weight 943	Approx. Weight 947	C <sub>v</sub>
SIZE	A	B	C			
3/8	1.25	2.06	1.97	0.43	0.43	2.5
1/2	1.25	2.41	2.09	0.43	0.43	4.1
3/4	1.50	2.81	2.31	0.66	0.66	7.6
1	1.91	3.53	2.66	1.02	1.02	13
1 1/4	2.16	3.88	3.09	1.47	1.47	23
1 1/2	2.59	4.22	3.31	2.20	2.20	31
2	3.13	5.09	3.78	3.30	3.30	54

### RATING

- 250 PSI NON-SHOCK COLD WATER, OIL OR GAS

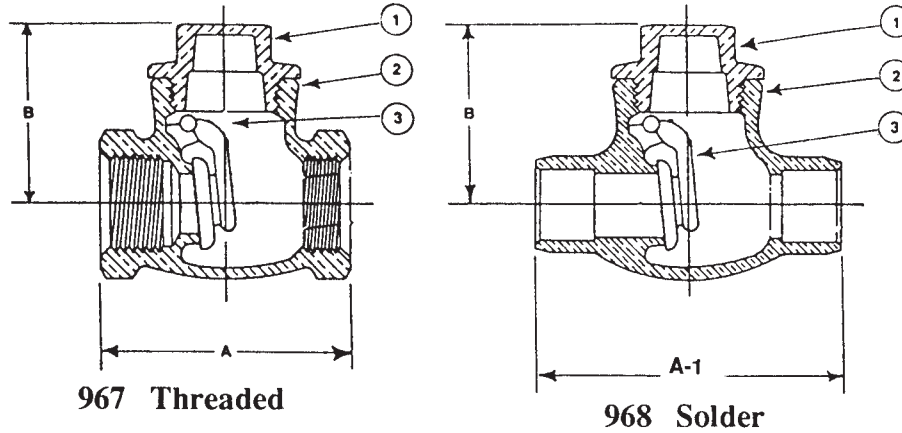
### FEATURES

- BRONZE BODY
- THREADED OR SOLDER ENDS
- BRONZE SPRING
- BUNA DISC RING
- BRONZE DISC HOLDER
- 100% FACTORY TESTED
- SILENT CLOSING (minimizes water hammer)
- INTERNATIONAL

MATERIAL SPECIFICATION			
1	Body	Cast Bronze	ASTM B584, C84400
2	Tail Piece	Cast Bronze	ASTM B584, C84400
3	Disc	Buna	
4	Disc Holder	Cast Bronze	ASTM B584, C84400
5	Spring	Bronze	ASTM B103, C52100

Rev. 3

The information presented on this sheet is correct at the time of publication. Hammond Valve reserves the right to change design, and/or material specifications without notice. For the most current information access [www.hammondvalve.com](http://www.hammondvalve.com)



DIMENSIONS (INCHES)				Approx. Weight 967	Approx. Weight 968	C <sub>v</sub>
SIZE	A	A-1	B			
1/2	2.13	2.53	1.53	0.44	0.45	10
3/4	2.31	3.13	1.63	0.57	0.62	18
1	2.72	3.91	1.78	0.89	0.97	31
1 1/4	3.13	4.44	2.00	1.28	1.42	54
1 1/2	3.50	5.00	2.25	1.72	1.84	76
2	4.28	6.13	2.69	2.58	2.75	131
2 1/2	5.31	-	3.34	5.67	-	192
3	6.31	-	3.84	8.00	-	297
4	7.47	-	4.53	14.30	-	600

MATERIAL SPECIFICATION			
1	Cap	Cast Brass	ASTM B584, C85700
2	Body	Cast Brass	ASTM B584, C85700
3	Disc	Cast Brass	ASTM B584, C85700

Rev. 3

### RATING

- 200 PSI NON-SHOCK

**Warning: DO NOT USE**  
for reciprocating air compressor  
service.

### FEATURES

- BRASS BODY
- THREADED OR SOLDER ENDS
- THREADED BONNET
- INTEGRAL SEAT
- BRASS DISC
- 100% FACTORY TESTED
- INTERNATIONAL

# GATE IB640

## BRONZE

125 lb. SWP-200 lb. WOG† • General Service  
 Solid Wedge Disc • Rising Stem  
 Threaded Bonnet • Gland Packed • Threaded Ends

4" size has split wedge and bolted bonnet. It is not covered in MSS SP-80.

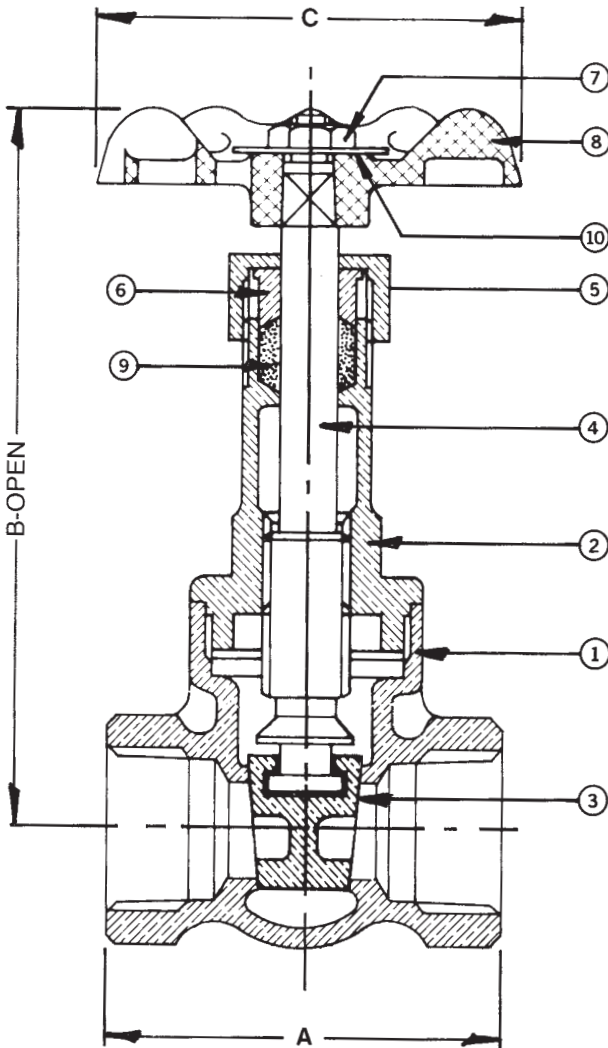
### SPECIFICATIONS

<b>IB640</b>	<b>Conforms to: MSS SP-80. Type 2, Class 125, Threaded Ends.</b>
--------------	--

### MATERIAL LIST

NO.	PART	MATERIAL	SPECIFICATION
1	Body	Bronze	ASTM B 62
2	Bonnet	Bronze	ASTM B 62
3	Wedge	Bronze	ASTM B 62
4	Stem	Bronze	ASTM B 62
5	Stuff Nut	Brass	ASTM B 283 C37700
6 <sup>1</sup>	Gland	Brass	ASTM B 124 C37700
7	Wheel Nut	Brass	Commercial
8	Handwheel	Mall. Iron	Commercial
9	Packing	Non-Asbestos	
10	Name Plate	Sh. Alum.	Commercial

<sup>1</sup> Not used on 1/2" and smaller.



### DIMENSIONS - INCHES / MILLIMETERS

Units	Size	A	B	C	C <sub>v</sub>
Inches	1/4	1.75	4.38	2.00	5.6
mm	6.35	44.45	111.13	5.80	5.6
Inches	3/8	1.81	4.38	2.00	10.7
mm	9.53	46.05	111.13	5.80	10.7
Inches	1/2	2.00	4.38	2.00	1.8
mm	12.70	50.80	111.13	5.80	1.8
Inches	3/4	2.13	5.84	2.50	32.0
mm	19.05	53.98	148.44	63.50	32.0
Inches	1	2.56	7.06	2.75	54.0
mm	25.40	65.10	179.40	69.85	54.0
Inches	1 1/4	2.78	8.78	3.13	97.0
mm	31.75	70.64	223.04	79.38	97.0
Inches	1 1/2	2.81	9.50	3.50	135.0
mm	38.10	71.45	241.30	88.90	135.0
Inches	2	3.31	11.50	3.75	230.0
mm	50.80	84.15	292.10	95.25	230.0
Inches	2 1/2	4.19	14.31	4.75	337.0
mm	63.50	106.38	363.55	120.65	337.0
Inches	3	4.63	16.63	5.25	536.0
mm	76.20	117.48	422.28	133.35	536.0
Inches	4	5.50	15.50	5.25	960.0
mm	101.60	139.70	393.70	133.35	960.0

† Non-Shock

Rev. 3

BETTER AT EVERY TURN



**HAMMONDVALVE**  
 www.hammondvalve.com

The information presented on this sheet is correct at the time of publication. Hammond Valve reserves the right to change design, and/or material specifications without notice. For the Installation, Operation and Maintenance Manual (IOM) see the engineering section on our website. For the most current information access [www.hammondvalve.com](http://www.hammondvalve.com)

# BUTTERFLY VALVE

# 6100 SERIES

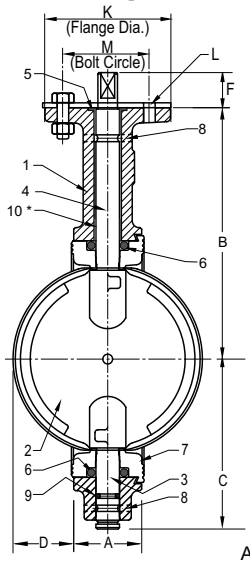
2"-12" - 200 PSI (1380 kPa)

## RATINGS

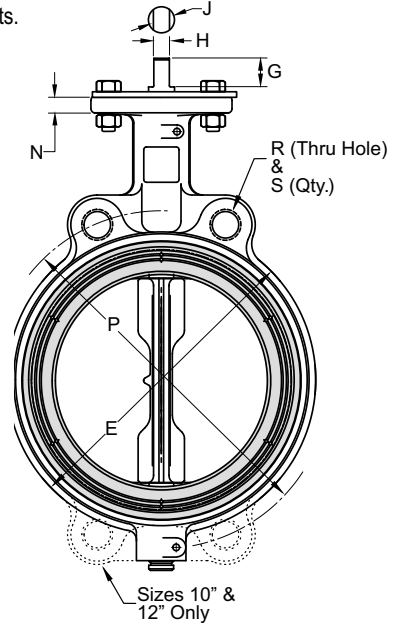
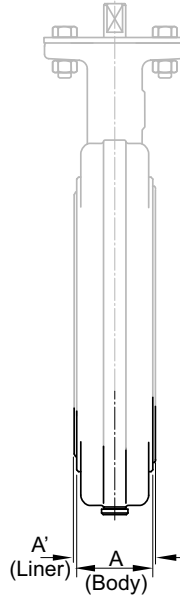
200 PSI Butterfly Valve  
Non Shock Water, Oil,  
Gas

## SPECIFICATIONS

MSS SP-67  
API-609



For Dead End Applications Use Hammond Valve "6200" Products.



ITEM	PARTS NAME	MATERIAL
1	BODY	CAST IRON-ASTM A 126 CL B
		CAST IRON-EPOXY COATED
		CAST IRON-NYLON COATED
		DUCTILE IRON-ASTM A 536
		DUCTILE IRON-EPOXY COATED
		DUCTILE IRON-NYLON COATED
2	DISC	NP DUCTILE IRON-ASTM A 536
		ALUMINUM BRONZE-ASTM B 148
		STAINLESS STEEL-TYPE 316
3	BOTTOM STEM	NYLON COATED DUCTILE IRON
		EPOXY COATED DUCTILE IRON
		STAINLESS STEEL TYPE 416
4	TOP STEM	STAINLESS STEEL TYPE 316
		STAINLESS STEEL TYPE 416
5	TOP BEARING	STAINLESS STEEL TYPE 316
6	SEAL	THERMOSET POLYMER
7	LINER	EPDM, BUNA, VITON(1)
		BUNA
		EPDM
		VITON
		VITON-GFLT
		HYPALON
		NEOPRENE BLACK-FDA
NEOPRENE WHITE-FDA		
8	ROLL PIN	TEFLON OVER BUNA (50# WOG)
9	STEM SEAL	STAINLESS STEEL
10*	LOWER BEARING	EPDM, BUNA, VITON(1)
11	OPERATOR	THERMOSET POLYMER
		LEVER HANDLE
		EPOXY COATED LEVER
		GEAR OPERATOR
		GEAR OP W/ MEMORY STOP
		GEAR OP W/ LOCK
	ACTUATOR-AIR/AIR	
	ACTUATOR-AIR/SPRING	
	ACTUATOR-ELECTRIC	

## DIMENSIONS

	INCHES	2	2-1/2	3	4	5	6	8	10	12
A (Body)	INCHES	1.69	1.81	1.81	2.07	2.19	2.19	2.38	2.69	3.06
	mm	42.9	46.1	46.0	52.5	55.6	55.6	60.3	68.3	78.0
A' (Liner)	INCHES	1.82	1.94	1.94	2.20	2.32	2.31	2.51	2.82	3.21
	mm	46.1	49.1	49.1	55.8	58.8	58.7	63.6	71.5	82.0
B	INCHES	5.50	6.00	6.25	7.00	7.53	8.00	9.38	10.19	12.06
	mm	139.7	152.4	158.8	177.8	191.3	203.2	238.1	258.8	306.4
C	INCHES	3.06	3.31	3.75	4.25	4.94	5.56	6.56	7.88	9.25
	mm	77.8	84.1	95.3	108.0	125.4	141.3	166.7	200.0	235.0
D (Chord Dia)	INCHES	1.49	2.01	2.64	3.67	4.71	5.66	7.72	9.70	11.68
	mm	37.8	51.1	67.1	93.2	119.6	143.8	196.1	246.4	296.7
D' (Intrusion)	INCHES	0.28	0.44	0.69	1.06	1.50	1.94	2.84	3.69	4.50
	mm	7.1	11.1	17.5	27.0	38.1	49.2	72.2	93.7	114.3
E	INCHES	4.13	4.88	5.38	6.88	7.75	8.75	11.00	13.38	16.13
	mm	104.8	123.8	136.5	174.6	196.9	222.3	279.4	339.7	409.6
F	INCHES	1.13	1.13	1.13	1.13	1.13	1.13	1.50	1.50	1.50
	mm	28.6	28.6	28.6	28.6	28.6	28.6	38.1	38.1	38.1
G	INCHES	0.81	0.81	0.81	0.81	0.81	0.81	1.06	1.06	1.06
	mm	20.6	20.6	20.6	20.6	20.6	20.6	27.0	27.0	27.0
H	INCHES	0.35	0.35	0.35	0.40	0.40	0.44	0.53	0.71	0.71
	mm	8.9	8.9	8.9	10.2	10.2	11.2	13.5	18.0	18.0
J	INCHES	0.50	0.50	0.50	0.56	0.56	0.62	0.75	1.00	1.00
	mm	12.6	12.6	12.6	14.2	14.2	15.8	19.0	25.4	25.4
K	INCHES	4	4	4	4	4	4	6	6	6
	mm	101.6	101.6	101.6	101.6	101.6	101.6	152.4	152.4	152.4
L	INCHES	0.44	0.44	0.44	0.44	0.44	0.44	0.56	0.56	0.56
	mm	11.1	11.1	11.1	11.1	11.1	11.1	14.3	14.3	14.3
M	INCHES	3.25	3.25	3.25	3.25	3.25	3.25	5.00	5.00	5.00
	mm	82.6	82.6	82.6	82.6	82.6	82.6	127.0	127.0	127.0
N	INCHES	0.44	0.44	0.44	0.44	0.44	0.44	0.50	0.50	0.50
	mm	11.1	11.1	11.1	11.1	11.1	11.1	12.7	12.7	12.7
P	INCHES	4.75	5.50	6.00	7.50	8.50	9.50	11.75	14.25	17.00
	mm	120.7	139.7	152.4	190.5	215.9	241.3	298.5	362.0	431.8
R		5/8-11	5/8-11	5/8-11	5/8-11	3/4-10	3/4-10	3/4-10	7/8-9	7/8-9
S		2	2	2	2	2	2	2	4	4

(1) VITON O-RINGS ARE USED WITH HYPALON, NEOPRENE, AND TEFLON LINERS. \* Provided on 8", 10", 12".

Rev. 2

The information presented on this sheet is correct at the time of publication. Hammond Valve reserves the right to change design, and/or material specifications without notice. For the Installation, Operation and Maintenance Manual (IOM) see the engineering section on our website. For the most current information access [www.hammondvalve.com](http://www.hammondvalve.com)

# GLOBE IB440 BRONZE

125 lb. SWP-200 lb. WOG† • Plumbing and Heating  
Bronze Disc • Threaded Bonnet • Threaded Ends

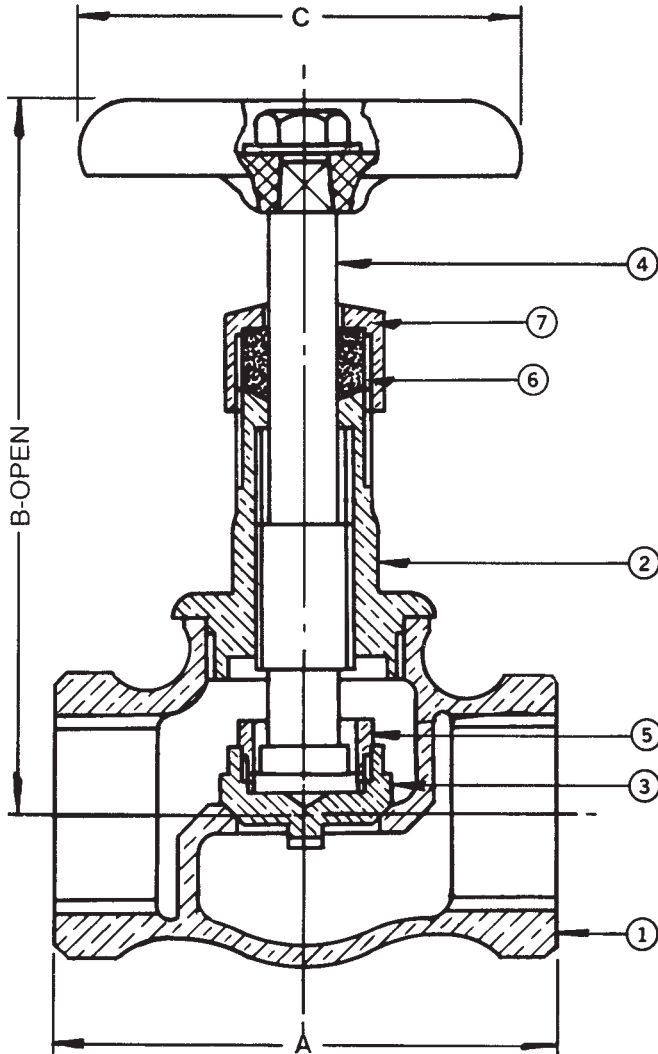
1/4" to 1/2" sizes have the disc integral with the stem and have no disc ring.

## SPECIFICATIONS

IB440	Conforms to: MSS SP-80, Type 1, Class 125, Threaded Ends.
-------	--

## MATERIAL LIST

NO.	PART	MATERIAL	SPECIFICATION
1	Body	Bronze	ASTM B 62
2	Bonnet	Bronze	ASTM B 62
3	Disc	Bronze	ASTM B 62
4	Stem	Bronze	ASTM B 62
5	Disc Ring	Bronze	ASTM B 16 3/4" to 2" ASTM B 62 2 1/2" and 3"
6	Packing	Non-Asbestos	Commercial
7	Packing Nut	Brass	ASTM B 16
8	Handwheel	Mall. Iron	Commercial
9	Identification Plate	Aluminum	Commercial
10	Handwheel Nut	Brass	Commercial
11	Gland (not shown)	Brass	ASTM B 16 2 1/2" & 3" only



## DIMENSIONS - INCHES / MILLIMETERS

Units	Size	A	B	C	C <sub>v</sub>
Inches	1/8	1.63	3.06	2.00	0.61
mm	3.18	41.28	77.80	50.80	
Inches	1/4	1.63	3.06	2.00	1.16
mm	6.35	41.28	77.80	50.80	
Inches	3/8	1.81	3.19	2.00	2.21
mm	9.53	46.05	80.98	50.80	
Inches	1/2	2.31	3.63	2.25	3.64
mm	12.70	58.75	92.08	57.15	
Inches	3/4	2.56	3.94	2.50	6.65
mm	19.05	65.10	100.03	63.50	
Inches	1	2.94	4.38	2.75	11.10
mm	25.40	74.63	111.13	69.85	
Inches	1 1/4	3.38	5.19	3.13	20.00
mm	31.75	85.73	131.78	79.38	
Inches	1 1/2	3.69	5.75	3.50	28.00
mm	38.10	93.68	146.05	88.90	
Inches	2	4.44	6.75	4.00	48.00
mm	50.80	112.71	171.45	101.60	
Inches	2 1/2	5.75	8.63	4.75	70.00
mm	63.50	146.05	219.08	120.65	
Inches	3	6.88	9.25	5.50	111.00
mm	76.20	174.63	234.95	139.70	

† Non-Shock

Rev. 4

BETTER AT EVERY TURN



**HAMMONDVALVE**  
www.hammondvalve.com

The information presented on this sheet is correct at the time of publication. Hammond Valve reserves the right to change design, and/or material specifications without notice. For the Installation, Operation and Maintenance Manual (IOM) see the engineering section on our website. For the most current information access [www.hammondvalve.com](http://www.hammondvalve.com)