

# "8901"

# 1/4" - 3"

**BRASS BALL VALVE  
TWO-PIECE, FULL-PORT  
600 WOG / 150 SWP  
THREADED ENDS\***

**MSS-SP110**  
NSF61-8  
ASME A112.4.14

**SA**  
C US  
ANSI Z 21.15-1997 Z CGA 9.1-M97  
3-88 IAS, CR91-002  
ASME 16.44-2002  
CAN/CGA-3.16-M88

**UL** US  
C  
UL 125  
UL 842  
Subject 258

**FM**  
APPROVED  
1140

1/4" through 2" Only

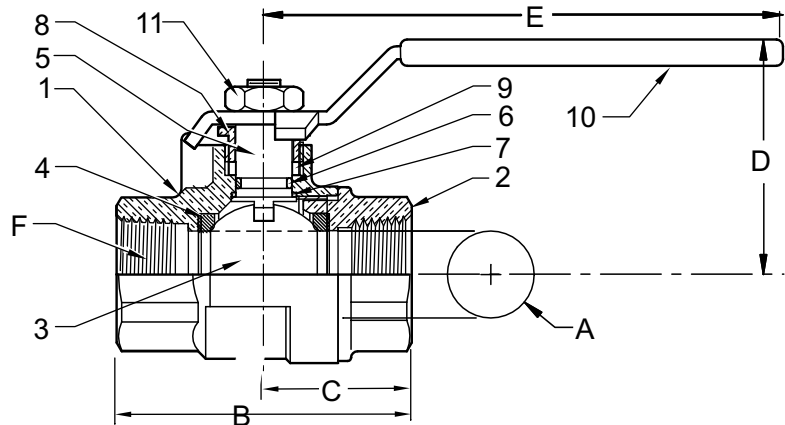
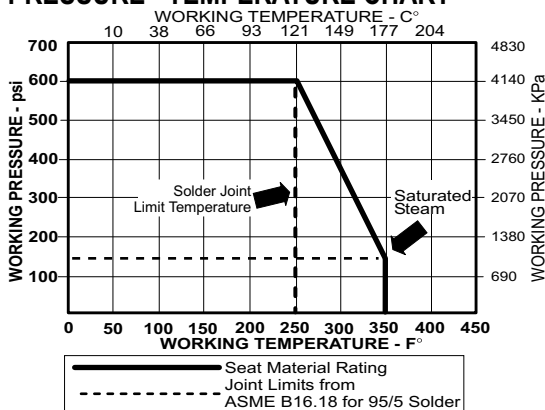
## MATERIALS LIST

ITEM	PART	MATERIALS	ASTM SPEC.
1	Body	Brass, Forged	B283
2	Tailpiece	Brass, Forged	B283
3	Ball	Brass w/ Chrome Plating	B283
4	Ball Seal	PTFE	Commercial
5	Stem	Brass	B124
6	O-Ring	Buna-N	D2006
7	Thrust Washer	PTFE	Commercial
8	Gland Nut	Brass	B124
9	Packing	PTFE	Commercial
10	Handle	Zinc Plated Steel	Commercial
11	Handle Nut	Zinc Plated Steel	Commercial

**CLASSIFIED**  
**UL**  
ANSI / NSF 61  
BALL VALVE  
9EA0  
**WATER QUALITY**

\*Also Available 8901-07  
(Locks only in closed position)

## PRESSURE - TEMPERATURE CHART



## DIMENSIONS

Valve Size	UNITS	1/4"	3/8"	1/2"	3/4"	1"	1-1/4"	1-1/2"	2"	2-1/2"	3"
A	INCHES	.39	.39	.51	.76	1.00	1.26	1.50	2.00	2.48	2.95
	mm	9.9	9.9	12.7	19.3	25.0	32.0	38.1	51.0	63	74.9
B	INCHES	1.87	1.87	2.25	2.62	3.06	3.5	3.75	4.38	5.16	6
	mm	47	47	57	67	78	89	95	111	131.1	152.4
C	INCHES	0.95	0.95	1.12	1.31	1.91	2.21	1.87	2.19	2.58	3
	mm	24	24	61	33	49	56	47	56	65.5	76.2
D	INCHES	1.42	1.42	1.46	1.93	2.10	2.33	2.52	2.96	3.94	4.37
	mm	36	36	37	49	53	59	64	75	100.1	111
E	INCHES	3.14	3.14	3.14	4.35	4.35	5.00	5.00	6.90	7.87	7.87
	mm	80	80	80	110	110	127	127	175	199.9	199.9
F	THREAD SIZE	1/4" NPT	3/8" NPT	1/2" NPT	3/4" NPT	1" NPT	1-1/4" NPT	1-1/2" NPT	2" NPT	2-1/2" NPT	3" NPT
	Cv	12	12	18	40	72	112	161	287	448	645
TORQUE	in-lb	16	16	19	58	69	89	124	210	445	563
	N.m	1.8	1.8	2.1	6.5	7.8	10	14	24		
WEIGHT	lbs	0.33	0.34	0.47	0.89	1.24	1.66	2.34	4.94	7.4	10.47
	Kg	.149	.155	.213	.403	.565	.755	1.064	2.245	3.35	4.75

Rev. 6

The information presented on this sheet is correct at the time of publication. Hammond Valve reserves the right to change design, and/or material specifications without notice. For the Installation, Operation and Maintenance Manual (IOM) see the engineering section on our website. For the most current information access [www.hammondvalve.com](http://www.hammondvalve.com)

BV-23

