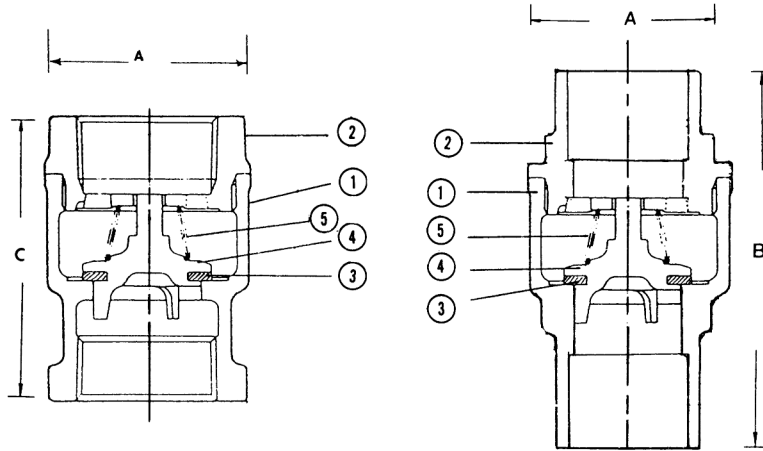


BRONZE SPRING CHECK VALVE

943 & 947

250 WOG



943 Threaded

947 Solder

DIMENSIONS (INCHES)				Approx. Weight 943	Approx. Weight 947	C _v
SIZE	A	B	C			
3/8	1.25	2.06	1.97	0.43	0.43	2.5
1/2	1.25	2.41	2.09	0.43	0.43	4.1
3/4	1.50	2.81	2.31	0.66	0.66	7.6
1	1.91	3.53	2.66	1.02	1.02	13
1 1/4	2.16	3.88	3.09	1.47	1.47	23
1 1/2	2.59	4.22	3.31	2.20	2.20	31
2	3.13	5.09	3.78	3.30	3.30	54

RATING

- 250 PSI NON-SHOCK COLD WATER, OIL OR GAS

FEATURES

- BRONZE BODY
- THREADED OR SOLDER ENDS
- BRONZE SPRING
- BUNA DISC RING
- BRONZE DISC HOLDER
- 100% FACTORY TESTED
- SILENT CLOSING (minimizes water hammer)
- INTERNATIONAL

MATERIAL SPECIFICATION			
1	Body	Cast Bronze	ASTM B584, C84400
2	Tail Piece	Cast Bronze	ASTM B584, C84400
3	Disc	Buna	
4	Disc Holder	Cast Bronze	ASTM B584, C84400
5	Spring	Bronze	ASTM B103, C52100

Rev. 3

The information presented on this sheet is correct at the time of publication. Hammond Valve reserves the right to change design, and/or material specifications without notice. For the most current information access www.hammondvalve.com