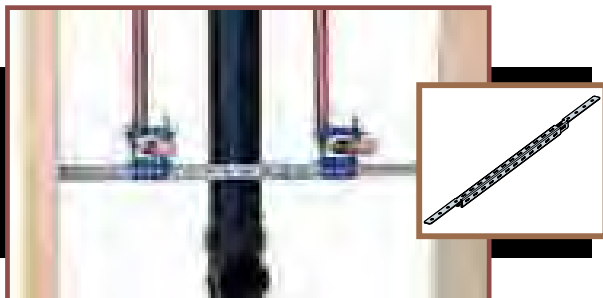


HOLDRITE STOUT BRACKET® and HOLDRITE® EZ-STRUT™ Load Ratings on page 43

HOLDRITE STOUT BRACKET® – #SB1, #SB2 #SB1S, #SB2S

- Multi-purpose galvanized steel bracket supports various application solutions
- Ideal for lavatory, shower, water closet, vertical, horizontal and much more
- Telescoping design supports Copper, PEX, CPVC, and many other types of piping
- Numerous clamps and fittings integrate onto multiple sides of the Stout Bracket for superior strength and versatility
- SB1S and SB2S includes four screws



| Model# | Size | For Pipe Size(s) | Box Qty |
|--------|------------|------------------|---------|
| SB1 | 10" to 18" | Various | 50 |
| SB1S | 10" to 18" | Various | 50 |
| SB2 | 13" to 25" | Various | 50 |
| SB2S | 13" to 25" | Various | 50 |

HOLDRITE STOUT BRACKET® – #SB3, #SB4

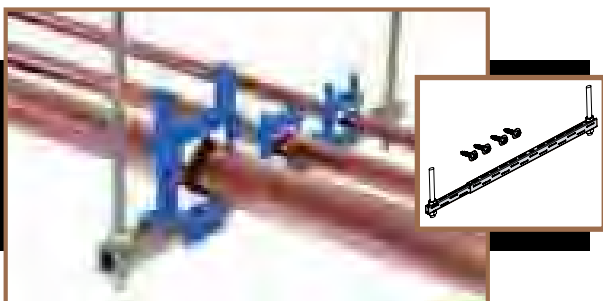
- Ideal for shower head, tub spout, vertical mid-span, and much more
- Supports both 2-eared and 3-eared 90s
- Telescoping design supports CPVC, Copper, and PEX tubing
- Integrates with several HOLDRITE clamps and other industry standard components



| Model# | Bracket Size | For Pipe Size(s) | Box Qty |
|--------|--------------------|------------------|---------|
| SB3 | 10-1/4" to 17-1/2" | Various | 50 |
| SB4 | 15-1/4" to 25-1/2" | Various | 50 |

HOLDRITE EZ-STRUT™ – #EZ-1, #EZ-2

- Galvanized steel trapeze platform with telescoping design
- Ideal for multiple pipe run application including gas, Copper, CPVC, PEX
- Sizing from 12" to 40" with load rating of up to 1000 pounds
- Compatible with HOLDRITE #250 & #280 clamps & other industry clamps
- Attaches to standard all-thread rod
- Includes four screws



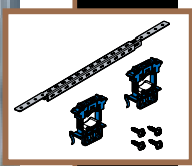
| Model# | Size | For Pipe Size(s) | Box Qty |
|--------|------------|------------------|---------|
| EZ-1 | 12" to 21" | Various | 25 |
| EZ-2 | 23" to 40" | Various | 25 |

HOLDRITE VARIABLE CLAMPS – #250, #280

- Ideal for noise and vibration isolation and dissimilar metal isolation
- Compatible with Copper, PEX, CPVC, CSST, PVC, Steel, & other materials
- Variable closure clamp mounts directly to Stout Bracket & EZ-Strut Bracket
- Supports up to 2" pipe sizes with sound rating



| Model# | Size | For Pipe Size(s) | Box Qty |
|--------|-----------------|------------------|---------|
| 250 | 2-3/8" X 2-5/8" | 3/8" to 1" CTS | 50 |
| 280 | 4-3/8" X 5-1/8" | 1" to 2" CTS/IPS | 50 |

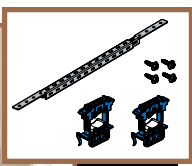
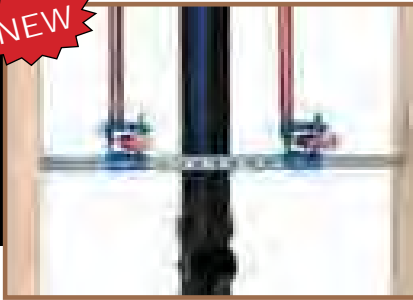


HOLDRITE STOUT BRACKET – #SB1-2502, #SB2-2502

- Multi-purpose galvanized steel bracket, (2) two HOLDRITE® #250 clamps, 4 screws
- Ideal for lavatory, shower, water closet, vertical, horizontal and much more
- Telescoping design supports Copper, PEX, CPVC, and many other types of piping
- Numerous clamps and fittings integrate into multiple sides of the Stout Bracket for superior strength and versatility

| Model# | Size | For Pipe Size(s) | Box Qty |
|----------|------------|------------------|---------|
| SB1-2502 | 10" to 18" | 1/2"-1" CTS | 25 |
| SB2-2502 | 13" to 25" | 1/2"-1" CTS | 25 |

NEW

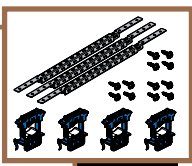


HOLDRITE REMODEL & REPAIR KIT – #HR-RR-1

- Ideal for Remodel & Repair or new construction for Sink/Toilet applications
- Telescoping bracket and variable closure clamps support Copper, PEX, and CPVC
- Reduces noise and vibration isolation and dissimilar metal isolation
- Installation photos on packaging
- Ideal for Counter Sales
- Includes (1) Stout Bracket, (2) clamps, and (4) screws

| Model# | Size | For Pipe Size(s) | Kit Qty | 6 PAK Qty | Case Qty |
|---------|------------|------------------|---------|-----------|----------|
| HR-RR-1 | 10" to 18" | 1/2" to 1" CTS | 1 | 6 | 36 |

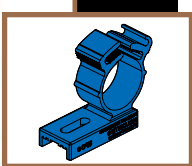
NEW



HOLDRITE REMODEL & REPAIR KIT – #HR-RR-2

- Ideal for Remodel & Repair or new construction for Tub/Shower applications
- Telescoping bracket and variable closure clamps support Copper, PEX, and CPVC
- Reduces noise and vibration isolation and dissimilar metal isolation
- Installation photos on packaging
- Ideal for Counter Sales
- Includes (3) Stout Brackets, (4) clamps, and (12) screws

| Model# | Size | For Pipe Size(s) | Kit Qty | 6 PAK Qty | Case Qty |
|---------|------------|------------------|---------|-----------|----------|
| HR-RR-2 | 10" to 18" | 1/2" to 1" CTS | 1 | 6 | 36 |



HOLDRITE PRO CLAMP – #201, #202

- Ideal for securing single Copper, PEX, CPVC tubing to Stout Bracket
- Nylon clamps attach with a single fastener
- Flame rated per UL 94 V-2 standards

| Model# | Size | For Pipe Size(s) | Box Qty |
|--------|-----------------|------------------|---------|
| 201 | 2-1/8" X 1-7/8" | 1/2" CTS | 50 |
| 202 | 2-1/8" X 2-1/8" | 3/4" CTS | 50 |