



JAY R. SMITH MFG. CO.
 DIVISION OF SMITH INDUSTRIES, INC.
 POST OFFICE BOX 3237
 MONTGOMERY, ALABAMA 36109-0237 (USA)
 TEL: 334-277-8520 FAX: 334-272-7396



LOCATION

LAVATORY SUPPORTS WITH CONCEALED ARMS

FLOOR MOUNTED WITH "PRO-SET" UPRIGHTS

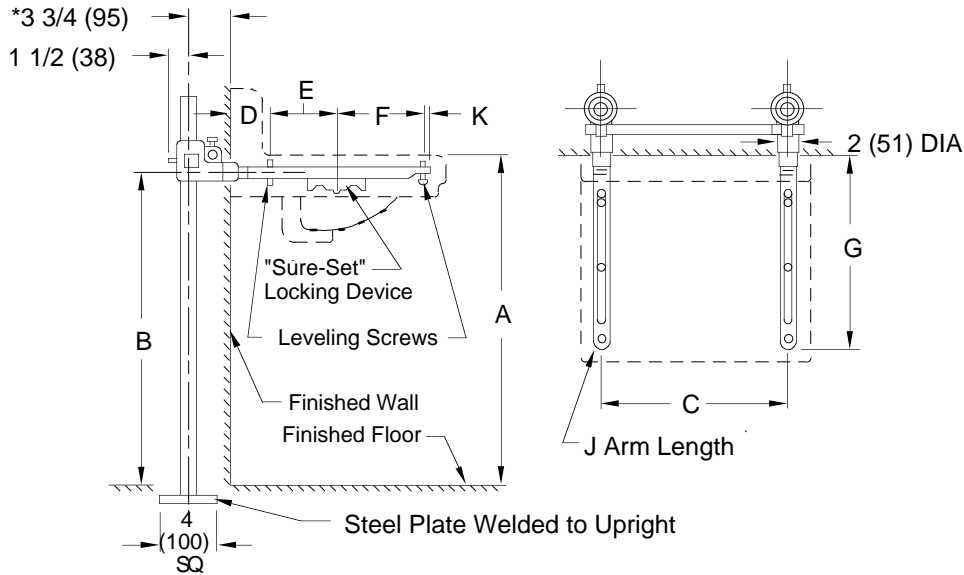
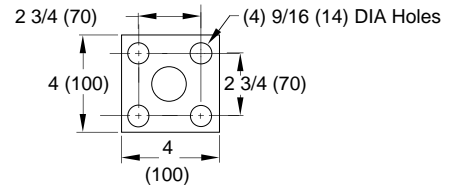


Fig. 0700 . . . FOR HIGH BACK LAVATORIES (shown)

NOTE: The rough-in dimensions listed on this drawing are based on current information available to Jay R. Smith by the fixture manufacturers. We recommend that you verify these dimensions with the fixture manufacturer. We will not accept responsibility for rough-in dimension changes by the fixture manufacturer.

NOTE: Dimensions shown in parentheses are in millimeters.



BASE DETAIL

ROUGHING-IN TABLE

FIXTURE MFG.	NAME	NUMBER	SIZE	A	B	C	D	E	F	G	J	K
AM. STD.	LUCERNE	0350.132	20 (510) x 18 (455)	31 (785)	29 1/4 (745)	16 3/4 (425)	4 (100)	6 (150)	6 (150)	16 1/2 (420)	19 (485)	1/2 (13)
AM. STD.	LUCERNE	0350.603	24 (610) x 20 (510)	31 (785)	29 1/4 (745)	20 1/4 (515)	4 (100)	7 (180)	7 (180)	18 1/2 (470)	20 (510)	1/2 (13)
AM. STD.	LUCERNE	0351.072	20 (510) x 18 (455)	31 (785)	29 1/4 (745)	16 3/4 (425)	4 (100)	6 (150)	6 (150)	16 1/2 (420)	19 (485)	1/2 (13)
AM. STD.	LUCERNE	0351.247	24 (610) x 20 (510)	31 (785)	29 1/4 (745)	20 1/4 (515)	4 (100)	7 (180)	7 (180)	18 1/2 (470)	20 (510)	1/2 (13)
AM. STD.	LUCERNE	0355.012	20 (510) x 18 (455)	31 (785)	29 1/4 (745)	16 3/4 (425)	4 (100)	6 (150)	6 (150)	16 1/2 (420)	19 (485)	1/2 (13)
AM. STD.	LUCERNE	0356.015	20 (510) x 18 (455)	31 (785)	29 1/4 (745)	16 3/4 (425)	4 (100)	6 (150)	6 (150)	16 1/2 (420)	19 (485)	1/2 (13)
AM. STD.	LUCERNE	0356.421	20 (510) x 18 (455)	31 (785)	29 1/4 (745)	16 3/4 (425)	4 (100)	6 (150)	6 (150)	16 1/2 (420)	19 (485)	1/2 (13)
AM. STD.	LUCERNE	0356.439	20 (510) x 18 (455)	31 (785)	29 1/4 (745)	16 3/4 (425)	4 (100)	6 (150)	6 (150)	16 1/2 (420)	19 (485)	1/2 (13)
CRANE	NORWICH	1-194	20 (510) x 18 (455)	31 (785)	29 3/8 (746)	16 1/4 (415)	4 (100)	5 5/8 (143)	4 3/8 (111)	14 1/2 (370)	16 (405)	1/2 (13)
CRANE	NORWICH	1-194	24 (610) x 21 (535)	31 (785)	29 3/8 (746)	19 1/2 (495)	4 (100)	5 5/8 (143)	7 1/8 (181)	17 1/4 (440)	19 (485)	1/2 (13)
ELJER	DELWYN	051-1644, 1848	20 (510) x 18 (455)	31 (785)	29 (735)	17 (430)	4 (100)	5 5/8 (143)	5 5/8 (143)	16 3/4 (425)	19 (485)	1 1/2 (38)
ELJER	DELWYN	051-1654, 1858	24 (610) x 20 (510)	31 (785)	29 1/4 (745)	21 (535)	4 (100)	5 5/8 (143)	7 1/8 (181)	17 1/4 (440)	19 (485)	1/2 (13)
KOHLER	GREENWICH	K-2030, 1, 2, 4, 6	20 (510) x 18 (455)	31 (785)	29 (735)	17 1/4 (440)	3 1/4 (83)	5 1/4 (135)	5 1/4 (135)	14 1/4 (360)	16 (405)	1/2 (13)
KOHLER	GREENWICH	K-2030, 1, 2, 4, 6	24 (610) x 20 (510)	31 (785)	29 (735)	19 (485)	3 1/4 (83)	5 3/4 (145)	6 1/4 (425)	16 3/4 (425)	19 (485)	1 1/2 (38)
U. RUNDLE	NEW CAMDEN	4648, 9	20 (510) x 18 (455)	31 (785)	29 3/8 (746)	16 1/4 (415)	4 1/2 (115)	2 1/2 (64)	4 (345)	13 1/2 (345)	16 (405)	2 1/2 (64)

NOTE: *This dimension can be increased when fixture support is to be installed behind the wall. (Specify when required and wall thickness).

DRAWING NUMBER
S0700

SIZE
A

SCALE:
NONE

DATE:
2-20-85

APPROVED BY:
SJM

CHECKED BY:
SJM

DRAWN BY:
CR

0700

FIGURE NUMBER

B	3-21-95	Added Metric Submittal Update	EMV	BS
A	9-16-94		EMB	
REV.	DATE	DESCRIPTION	BY	CKD. BY

WEIGHT POUNDS

VOLUME CUBIC FEET

FIGURE NUMBER

0700

WE CAN ASSUME NO RESPONSIBILITY FOR USE OF SUPERSEDED OR VOID DATA

DIMENSIONS ARE SUBJECT TO MANUFACTURERS TOLERANCE AND CHANGE WITHOUT NOTICE

H
 DRAWING NUMBER S0700D
 SIZE A
 SCALE: NONE
 DATE: 1-22-73
 APPROVED BY:
 CHECKED BY: RP
 DRAWN BY: JH
 0700D
 DIMENSIONS ARE SUBJECT TO MANUFACTURERS TOLERANCE AND CHANGE WITHOUT NOTICE



JAY R. SMITH MFG. CO.
 DIVISION OF SMITH INDUSTRIES, INC.
 POST OFFICE BOX 3237
 MONTGOMERY, ALABAMA 36109-0237 (USA)
 TEL: 334-277-8520 FAX: 334-272-7396



LOCATION

LAVATORY SUPPORTS WITH CONCEALED ARMS

FLOOR MOUNTED WITH "PRO-SET" UPRIGHTS

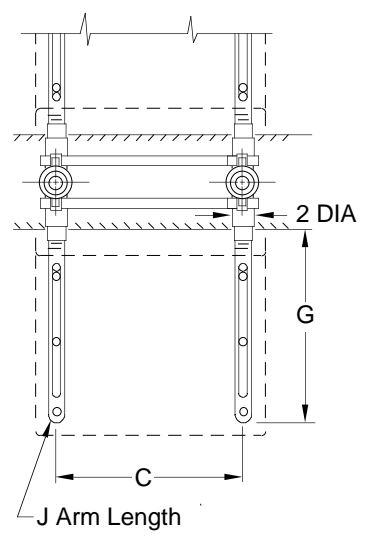
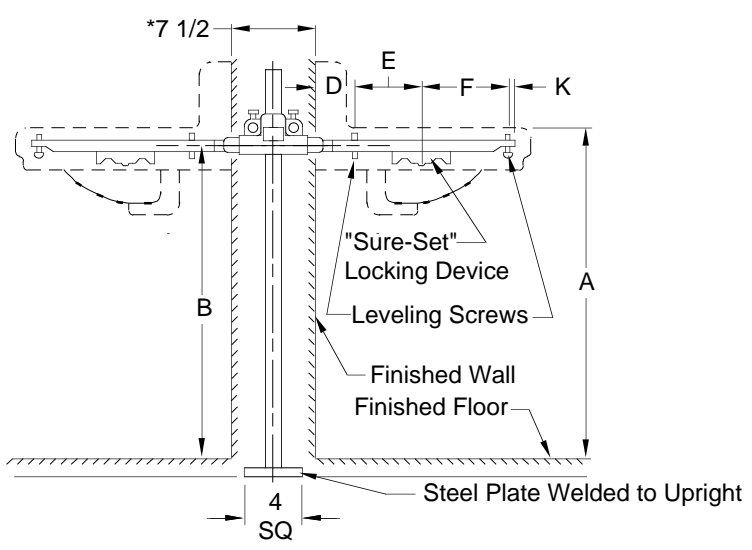
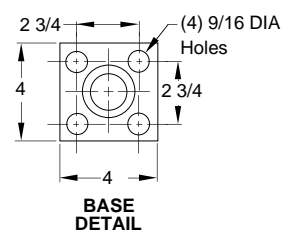


Fig. 0700D . . . FOR BACK TO BACK SUPPORT

NOTE: The rough-in dimensions listed on this drawing are based on current information available to Jay R. Smith by the fixture manufacturers. We recommend that you verify these dimensions with the fixture manufacturer. We will not accept responsibility for rough-in dimension changes by the fixture manufacturer.
NOTE: *This dimension can be increased when required (specify wall thickness).



ROUGHING-IN TABLE

FIXTURE MFG.	NAME	NUMBER	SIZE	A	B	C	D	E	F	G	J	K
AM. STD.	LUCERNE	0350.132	20 x 18	31	29 1/4	16 3/4	4	6	6	16 1/2	19	1/2
AM. STD.	LUCERNE	0350.603	24 x 20	31	29 1/4	20 1/4	4	7	7	18 1/2	20	1/2
AM. STD.	LUCERNE	0351.072	20 x 18	31	29 1/4	16 3/4	4	6	6	16 1/2	19	1/2
AM. STD.	LUCERNE	0351.247	24 x 20	31	29 1/4	20 1/4	4	7	7	18 1/2	20	1/2
CRANE	NORWICH	1-194	20 x 18	31	29 3/8	16 1/4	4	5 5/8	4 3/8	14 1/2	16	1/2
CRANE	NORWICH	1-194	24 x 21	31	29 3/8	19 1/2	4	5 5/8	7 1/8	17 1/4	19	1/2
ELJER	DELWYN	051-1644, 1848	20 x 18	31	29	17	4	5 5/8	5 5/8	16 3/4	19	1 1/2
ELJER	DELWYN	051-1654, 1858	24 x 20	31	29 1/4	21	4	5 5/8	7 1/8	17 1/4	19	1/2
KOHLER	GREENWICH	K-2030, 1, 2, 4, 6	20 x 18	31	29	17 1/4	3 1/4	5 1/4	5 1/4	14 1/4	16	1/2
KOHLER	GREENWICH	K-2030, 1, 2, 4, 6	24 x 20	31	29	19	3 1/4	5 3/4	6 1/4	16 3/4	19	1 1/2
U. RUNDLE	NEW CAMDEN	4648, 9	20 x 18	31	29 3/8	16 1/4	4 1/2	2 1/2	4	13 1/2	16	2 1/2

H	8-5-93	Submittal Update	EMB	WEIGHT POUNDS	VOLUME CUBIC FEET	FIGURE NUMBER 0700D
G	3-17-80	Welded Base Replace Cast Base	CL			
F	12-12-74	Rev Tab	RAS			
E	1-22-73	New Dwg.	JH			
REV.	DATE	DESCRIPTION	BY	CKD. BY		

SEE BACK SHEET

LAVATORY SUPPORTS WITH CONCEALED ARMS

FLOOR MOUNTED WITH "PRO-SET" UPRIGHTS

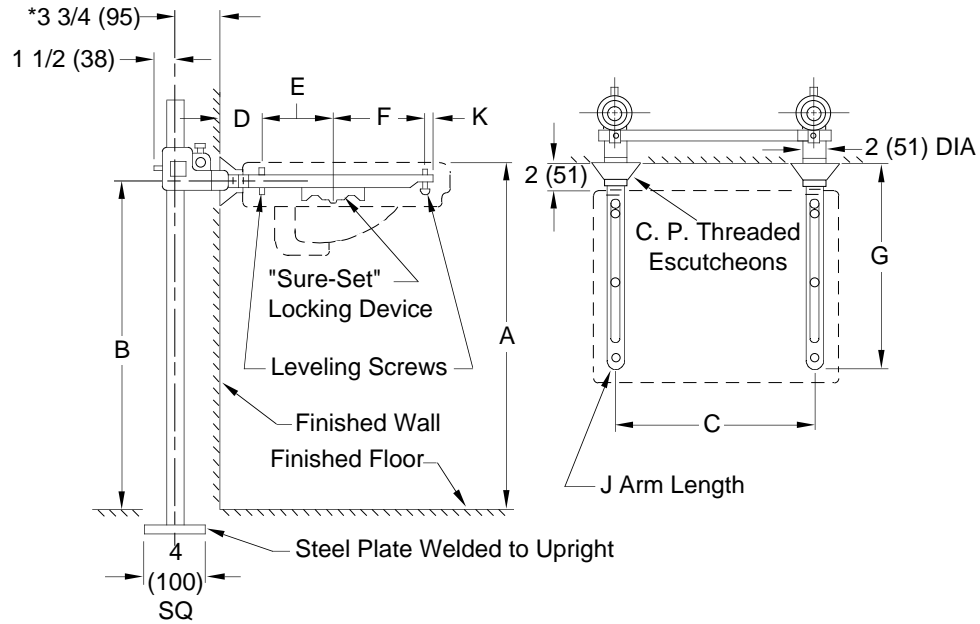
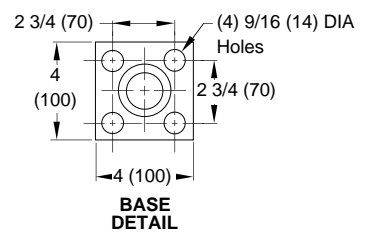


Fig. 0700 (-E) . . . FOR FLAT SLAB LAVATORIES (shown)

NOTE: The rough-in dimensions listed on this drawing are based on current information available to Jay R. Smith by the fixture manufacturers. We recommend that you verify these dimensions with the fixture manufacturer. We will not accept responsibility for rough-in dimension changes by the fixture manufacturer.

NOTE: *This dimension can be increased when fixture support is to be installed behind the wall. (Specify when required and wall thickness).

NOTE: Dimensions shown in parentheses are in millimeters.



ROUGHING-IN TABLE

FIXTURE MFG.	NAME	NUMBER	SIZE	A	B	C	D	E	F	G	J	K
AM. STD.	ROXALYN	0194.076	20 (510) x 18 (455)	31 (785)	29 1/4 (745)	16 1/2 (420)	4 (100)	7 (180)	7 (180)	18 1/2 (470)	20 (510)	1/2 (13)
AM. STD.	ROXALYN	0194.134	24 (610) x 20 (510)	31 (785)	29 1/4 (745)	20 (510)	4 (100)	7 (180)	7 (180)	18 1/2 (470)	20 (510)	1/2 (13)
AM. STD.	ROXALYN	0195.073	20 (510) x 18 (455)	31 (785)	29 1/4 (745)	16 1/2 (420)	4 (100)	7 (180)	7 (180)	18 1/2 (470)	20 (510)	1/2 (13)
AM. STD.	ROXALYN	0195.289	24 (610) x 20 (510)	31 (785)	29 1/4 (745)	20 (510)	4 (100)	7 (180)	7 (180)	18 1/2 (470)	20 (510)	1/2 (13)
CRANE	NORWICH	1-165	20 (510) x 18 (455)	31 (785)	29 1/8 (740)	16 1/4 (415)	4 (100)	5 5/8 (143)	6 3/8 (162)	18 1/2 (470)	20 (510)	2 1/2 (64)
CRANE	NORWICH	1-165	24 (610) x 21 (535)	31 (785)	29 1/8 (740)	19 1/2 (495)	4 (100)	5 5/8 (143)	7 1/8 (181)	18 1/4 (465)	20 (510)	1 1/2 (38)
ELJER	MAYBURNE	051-2344, 2548	20 (510) x 18 (455)	31 (785)	29 (735)	17 (430)	4 (100)	5 5/8 (143)	5 5/8 (143)	17 1/4 (440)	19 (485)	2 (51)
ELJER	MAYBURNE	051-2354, 2558	24 (610) x 20 (510)	31 (785)	29 (735)	20 7/8 (530)	4 (100)	5 5/8 (143)	7 1/8 (181)	18 1/4 (465)	20 (510)	1 1/2 (38)
KOHLER	JAMESTOWN	K-2053, 4, 5, 6	24 (610) x 18 (455)	31 (785)	29 (735)	16 1/2 (420)	4 (100)	5 5/8 (143)	5 5/8 (143)	17 1/4 (440)	19 (485)	2 (51)
KOHLER	JAMESTOWN	K-2053, 4, 5, 6	24 (610) x 20 (510)	31 (785)	29 (735)	19 (485)	4 (100)	7 (180)	7 (180)	18 1/2 (470)	20 (510)	1/2 (13)
U. RUNDLE	NEW CAMPUS	4698, 9	20 (510) x 18 (455)	31 (785)	29 3/8 (746)	16 1/4 (415)	4 (100)	5 (125)	4 (100)	14 (355)	16 (405)	1 (25)

DRAWING NUMBER **S0700 (-E)**
SIZE **A**
SCALE: **NONE**
DATE: **12-12-74**
APPROVED BY:
CHECKED BY: **RS**
DRAWN BY: **RAS**
0700 (-E)
DIMENSIONS ARE SUBJECT TO MANUFACTURERS TOLERANCE AND CHANGE WITHOUT NOTICE

WE CAN ASSUME NO RESPONSIBILITY FOR USE OF SUPERSEDED OR VOID DATA

J H G F	6-12-95 8-5-93 3-17-80 12-12-74	Added Millimeters Submittal Update Welded Base Replace Cast Base New Dwg	EMB EMB TB RAS	BS CL	WEIGHT POUNDS	VOLUME CUBIC FEET	FIGURE NUMBER 0700 (-E)
REV.	DATE	DESCRIPTION	BY	CKD. BY			

DOUBLE FIXTURE SUPPORT FLOOR MOUNTED WITH CONCEALED ARMS

AND ESCUTCHEONS FOR FLAT SLAB LAVATORIES

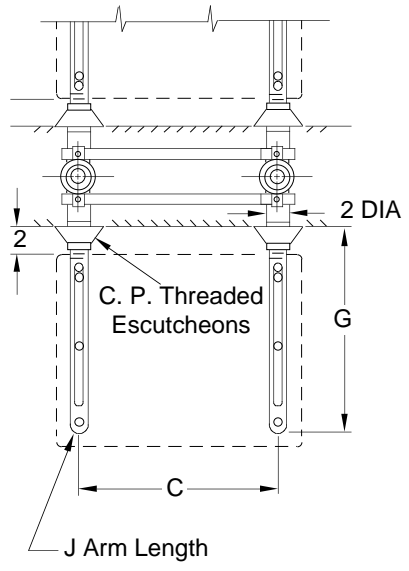
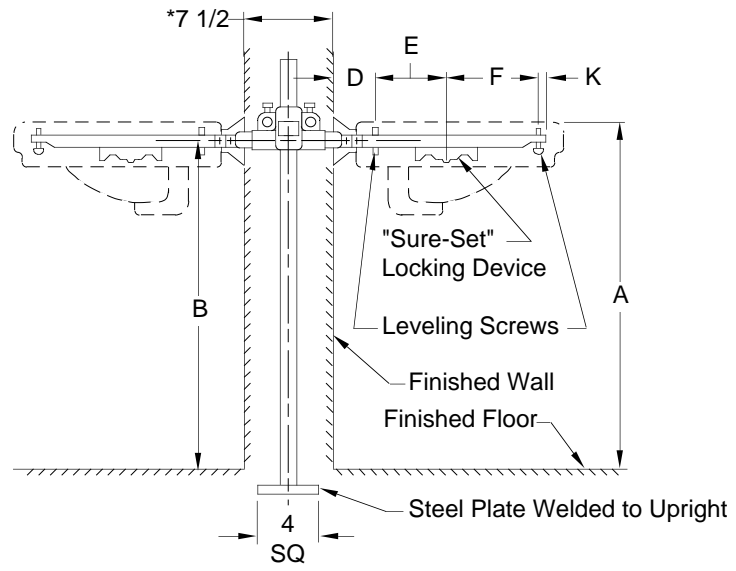
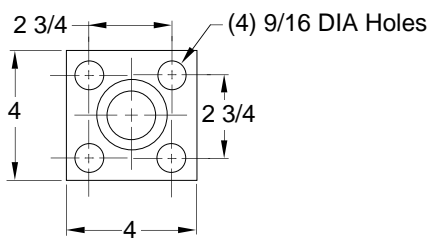


Fig. 0700D (-E) . . . FOR FLAT SLAB LAVATORIES (shown)

NOTE: The rough-in dimensions listed on this drawing are based on current information available to Jay R. Smith by the fixture manufacturers. We recommend that you verify these dimensions with the fixture manufacturer. We will not accept responsibility for rough-in dimension changes by the fixture manufacturer.

NOTE: * This dimension can be increased when required. (Specify wall thickness).



BASE DETAIL

ROUGHING-IN TABLE

FIXTURE MFG.	NAME	NUMBER	SIZE	A	B	C	D	E	F	G	J	K
AM. STD.	ROXALYN	0194.076	20 x 18	31	29 1/4	16 1/2	4	7	7	18 1/2	20	1/2
AM. STD.	ROXALYN	0194.134	24 x 20	31	29 1/4	20	4	7	7	18 1/2	20	1/2
AM. STD.	ROXALYN	0195.073	20 x 18	31	29 1/4	16 1/2	4	7	7	18 1/2	20	1/2
AM. STD.	ROXALYN	0195.289	24 x 20	31	29 1/4	20	4	7	7	18 1/2	20	1/2
CRANE	NORWICH	1-165	20 x 18	31	29 1/8	16 1/4	4	5 5/8	6 3/8	18 1/2	20	2 1/2
CRANE	NORWICH	1-165	24 x 21	31	29 1/8	19 1/2	4	5 5/8	7 1/8	18 1/4	20	1 1/2
ELJER	MAYBURNE	051-2344, 2548	20 x 18	31	29	17	4	5 5/8	5 5/8	17 1/4	19	2
ELJER	MAYBURNE	051-2354, 2558	24 x 20	31	29	20 7/8	4	5 5/8	7 1/8	18 1/4	20	1 1/2
KOHLER	JAMESTOWN	K-2053, 4, 5, 6	24 x 18	31	29	16 1/2	4	5 5/8	5 5/8	17 1/4	19	2
KOHLER	JAMESTON	K-2053, 4, 5, 6	24 x 20	31	29	19	4	7	7	18 1/2	20	1/2
U. RUNDLE	NEW CAMPUS	4698, 9	20 x 18	31	29 3/8	16 1/4	4	5	4	14	16	1

0700D (-E)
 DRAWING NUMBER
 SIZE **A**
 SCALE: **NONE**
 DATE: **12-12-74**
 APPROVED BY:
 CHECKED BY: **RS**
 DRAWN BY: **RAS**
 DIMENSIONS ARE SUBJECT TO MANUFACTURERS TOLERANCE AND CHANGE WITHOUT NOTICE
 WE CAN ASSUME NO RESPONSIBILITY FOR USE OF SUPERSEDED OR VOID DATA

G F E	9-21-94 3-17-80 12-12-74	Submittal Update Weld Base replace Cast Base New Dwg	EMB TB RAS	CL	WEIGHT POUNDS	VOLUME CUBIC FEET	FIGURE NUMBER 0700D (-E)
REV.	DATE	DESCRIPTION	BY	CKD. BY			



JAY R. SMITH MFG. CO.
 DIVISION OF SMITH INDUSTRIES, INC.
 POST OFFICE BOX 3237
 MONTGOMERY, ALABAMA 36109-0237 (USA)
 TEL: 334-277-8520 FAX: 334-272-7396



LOCATION

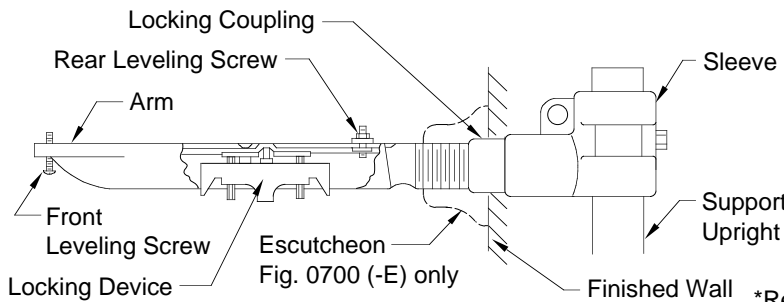
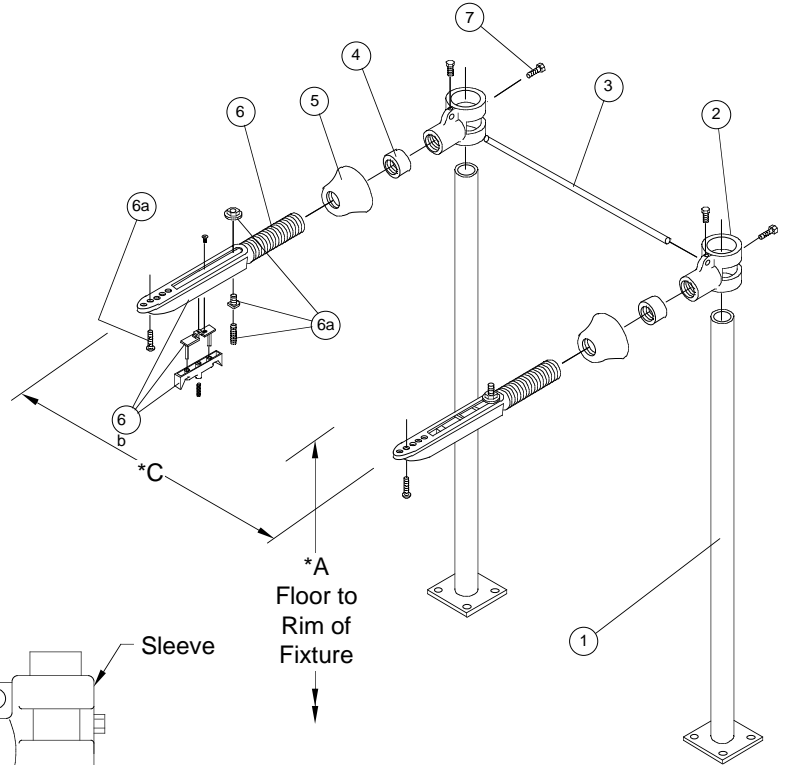
INSTALLATION INSTRUCTIONS FOR CONCEALED ARM CARRIERS

BEFORE starting rough-in be certain you:

- know correct fixture number and name
- have a copy of Smith submittal (rough-in) drawing with dimensions for fixture to be used.

NOTE: The rough-in dimensions listed on this drawing are based on current information available to Jay R. Smith by the fixture manufacturers. We recommend that you verify these dimensions with the fixture manufacturer. We will not accept responsibility for rough-in dimension changes by the fixture manufacturer.

PART	QTY	DESCRIPTION
1	2	Upright (w/welded base)
2	2	Sleeve Assembly
3	1	Alignment Bar
4	2	Locking Coupling
5	2	Escutcheon Fig. 0700 (-E)
6	2	Arm Assembly
6a	2	Rear Leveling Screw Assy
6b	2	Locking Device
6c	2	Front Leveling Screw



*Refer to Smith submittal drawing for these dimensions.

INSTALLATION INSTRUCTIONS FOR CONCEALED ARM CARRIERS

- Uprights (Part #1) must be spaced according to the "C" dimension (shown on the submittal drawing). Uprights should not be bolted rigidly to the floor at this time.
- Position sleeves (Part #2) by using the "B" dimension (shown on the submittal drawing). Secure to uprights with 5/16 (8)-18 hex head bolts (furnished) on the back of the sleeve.
- Slide alignment bar (Part #3) into the sleeves. Recheck the "C" dimension at the center of the uprights. Secure the alignment bar with 5/16 (8) hex head bolts (furnished). Uprights should now be bolted securely to the floor. Uprights must be plumb: if necessary, shim to compensate for uneven floors.
- Thread escutcheon (Part #5), Fig. 0700 (-E) only onto arm (Part #6). Thread locking coupling (Part #4) onto arm. Thread arms into sleeves (Part #2) to dimension "G" (shown on the submittal drawing). Lock arms in place by tightening locking coupling (Part #4). Recheck "C" dimension at the end of the arms.
- Rear leveling screw assemblies (Part #6a) must be set according to the "D" dimension (shown on the submittal drawing). Position the locking devices (Part #6b) to the "E" dimension (shown on the submittal drawing). Install the front leveling screws (Part #6b) to the "E" dimension (shown on the submittal drawing).
- Level lavatory with leveling screws as required and secure in place with locking device.

DRAWING NUMBER
S0700 INS

SIZE
A

SCALE:
NONE

DATE:
8-8-85

APPROVED BY:
KG

CHECKED BY:
CR

DRAWN BY:
VGD

0700, 0700 (-E)
INSTALLATION INSTRUCTIONS

WE CAN ASSUME NO RESPONSIBILITY FOR USE OF SUPERSEDED OR VOID DATA

DIMENSIONS ARE SUBJECT TO MANUFACTURERS TOLERANCE AND CHANGE WITHOUT NOTICE

B	6-7-95	Added Millimeters	EMB		WEIGHT POUNDS	VOLUME CUBIC FEET	FIGURE NUMBER
A	9-27-94	Submittal Update	EMB	BS			0700, 0700 (-E)
REV.	DATE	DESCRIPTION	BY	CKD. BY			INSTALLATION INSTRUCTIONS