



- Model No. Index
- ✓ Sight Flow Indicators
- Flow Meters & Totalizers
- Liquid Level Gauges & Valves
- Glass & Gaskets
- Sight Windows
- Switches Flow & Level
- Ejectors & Eductors
- Terms & Conditions
- Home

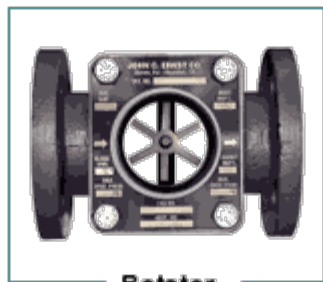
### Medium Pressure - Double Window - Flanged



Plain

**Plain** - No indicator. For direct visual inspection of liquid. Mounts in any direction.

<b>Model</b>	<b>Body Material</b>
200	Carbon Steel
240	Bronze
260	316 Stainless
290	Iron



Rotator

**Rotator** - Paddlewheel indicator used for clear media to enhance flow indication. Any direction.

<b>Model</b>	<b>Body Material</b>
201	Carbon Steel
241	Bronze
261	316 Stainless
291	Iron



Flapper

**Flapper** - Side flapper to indicate flow in one direction. Not for vertical down flows.

<b>Model</b>	<b>Body Material</b>
202	Carbon Steel
242	Bronze
262	316 Stainless
292	Iron



Drip

**Drip Tube** - Designed for very low flows so fluid drips off tube insert. Mainly vertical mounts.

<b>Model</b>	<b>Body Material</b>
203	Carbon Steel
243	Bronze
263	316 Stainless
293	Iron

### Features

- Sizes 1/4" to 16" Flanged
- 150# ANSI Rated
- Single Piece Cast Body
- Other Materials Available
- Teflon Lining Available

### Ratings

- **Carbon Steel:**
  - 285 psi @ 100°F
  - 230 psi @ 300°F
- **Bronze:**
  - 225 psi @ 150°F
  - 180 psi @ 300°F
- **Stainless Steel:**
  - 275 psi @ 100°F
  - 195 psi @ 400°F
- **Iron:**
  - 175 psi @ 150°F
  - 145 psi @ 300°F

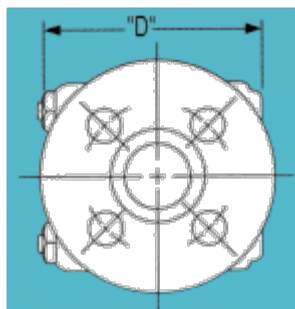
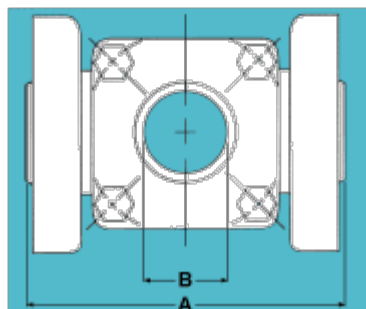
### Materials (Wetted)

- Glass: Temp Borosilicate
- Seals: Neoprene  
Teflon®\* in Stainless
- Rotator: Teflon®\*
- Flapper: 316 SS
- Drip Tube: 316SS

For Iron and Bronze units subtract 1/8" from "A" due to flat face Flanges. \*Temperature ratings are dependent on Seal material.

Note: Steam service requires mica shields, graphoil gaskets, and belleville washers.

Unit Size	Dimensions in Inches & (cm)			
	A	B	D	Wt.lbs
1/2, 3/4	4-5/8 (11.7)	1-1/4 (3.2)	3-15/16 (10.0)	4
1	5-5/8 (14.3)	1-1/2 (3.8)	4-1/2 (11.4)	7
1-1/4, 1-1/2	6-1/2 (16.5)	2-3/8 (6.0)	5-3/4 (14.6)	15
2	7-7/8 (20.0)	2-7/8 (7.3)	7-3/8 (18.7)	26
2-1/2, 3	9-3/8 (23.9)	3-3/4 (9.5)	8-15/16 (22.7)	52
4	11 (27.9)	4-3/4 (12.1)	9-1/2 (24.1)	70
6	14-1/4 (36.2)	7 (17.8)	13-9/16 (34.5)	125



Teflon® is a registered trademark of DuPont

[Previous Page](#) **Catalog Page 6** [Next Page](#)

[Model No. Index](#) | [Sight Flow Indicators](#) | [Flow Meters & Totalizers](#) | [Liquid Level Gauges & Valves](#) | [Glass & Gaskets](#)  
[Sight Windows](#) | [Switches Flow & Level](#) | [Ejectors & Eductors](#) | [Terms & Conditions](#) | [Home](#)

**John C. Ernst Co., Inc.**

**Sparta, NJ • Tel: 973-940-1600 • Fax: 973-940-1620**

**Toll Free: 1-888-463-7678**

**Email: [info@johnernst.com](mailto:info@johnernst.com)**

**Mailing Address**

**21 Gail Court  
Sparta, NJ 07871**

**Physical Address**

**21 Gail Court  
Sparta, NJ 07871**