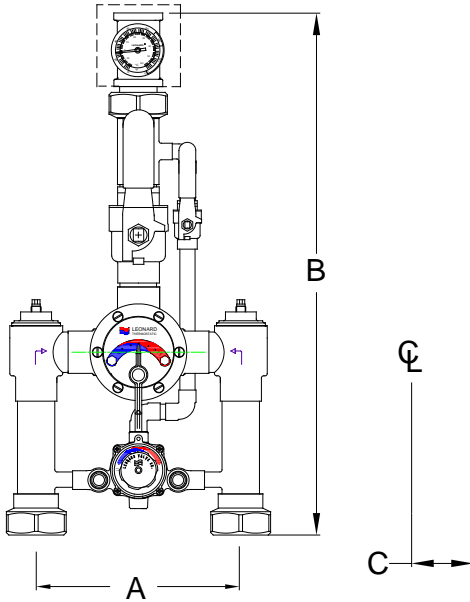


NEW GENERATION HIGH LOW SYSTEM

TM-2020B-_____



A=12" +/- 1/2" B=29" C=2 3/4"

(Shown with option DT)

- Large Type TM Thermostatic water mixing valve, adjustable high temperature limit stop*, inlet checkstops, wall support, outlet ball valve
- Small Type TM Thermostatic water mixing valve, adjustable high temperature limit stop*, integral checkstops, outlet ball valve
- 2" inlets, 2" outlet (51mm X 51mm)
- Locking temperature regulators
- 1 GPM (3.7 l/min) minimum flow capacity
- Inlet manifold piping
- Factory assembled and tested
- Select piping finish below

Valve assembly is ASSE 1017 listed

Valve assembly is CUPC listed



OPTIONS

- ___ SUFFIX RF - Rough bronze finish
- ___ SUFFIX CP - Chrome plated
- ___ SUFFIX DT- Color-coded dial thermometer (0 to 140°F, -10 to 60°C) (SHIP LOOSE)
- ___ SUFFIX IT- Inlet Thermometers (SHIP LOOSE)
- ___ SUFFIX TC- Test connection, additional DT option must also must be selected, see reverse.(SHIP LOOSE)

Note: Leonard Valve Company reserves the right of product, or design modifications without notice or obligation.

MINIMUM FLOW (GPM) (l/min)	SYSTEM PRESSURE DROP (PSIG)										PSI BAR
	5	10	15	20	25	30	35	40	45	50	
1.0 (3.7)	78 295	113 428	129 488	145 549	163 617	172 651	188 712	197 746	214 810	226 856	GPM l/min

NOTE: Flowrates will vary depending on existing field conditions. Leonard Valve Company always recommends using CASPAK® sizing software for proper valve sizing and model number applications.

CAUTION! All thermostatic water mixing valves have limitations. They will NOT provide the desired accuracy outside of their flow capacity range. Consult the Flow Capacity Chart and DO NOT OVERSIZE. Minimum flow must be no less than as indicated.

***NOTE:** A limit stop, set for 120°F (49°C), is simply a mechanical setting to prevent excessive handle rotation. If incoming water is hotter than 150°F (65.5°C), the temperature of the factory test, the valve when turned to full HOT may deliver water in excess of 120°F and the limit stop MUST BE RESET BY THE INSTALLER

Engineer's Approval

Job # _____
Arch/Eng. _____
Contractor _____

Note: The models shown represent Leonard Products which are believed to be equivalent in type and function to items specified. Leonard Valve Company is not responsible for errors or omissions due to differences in interpretations of information provided.

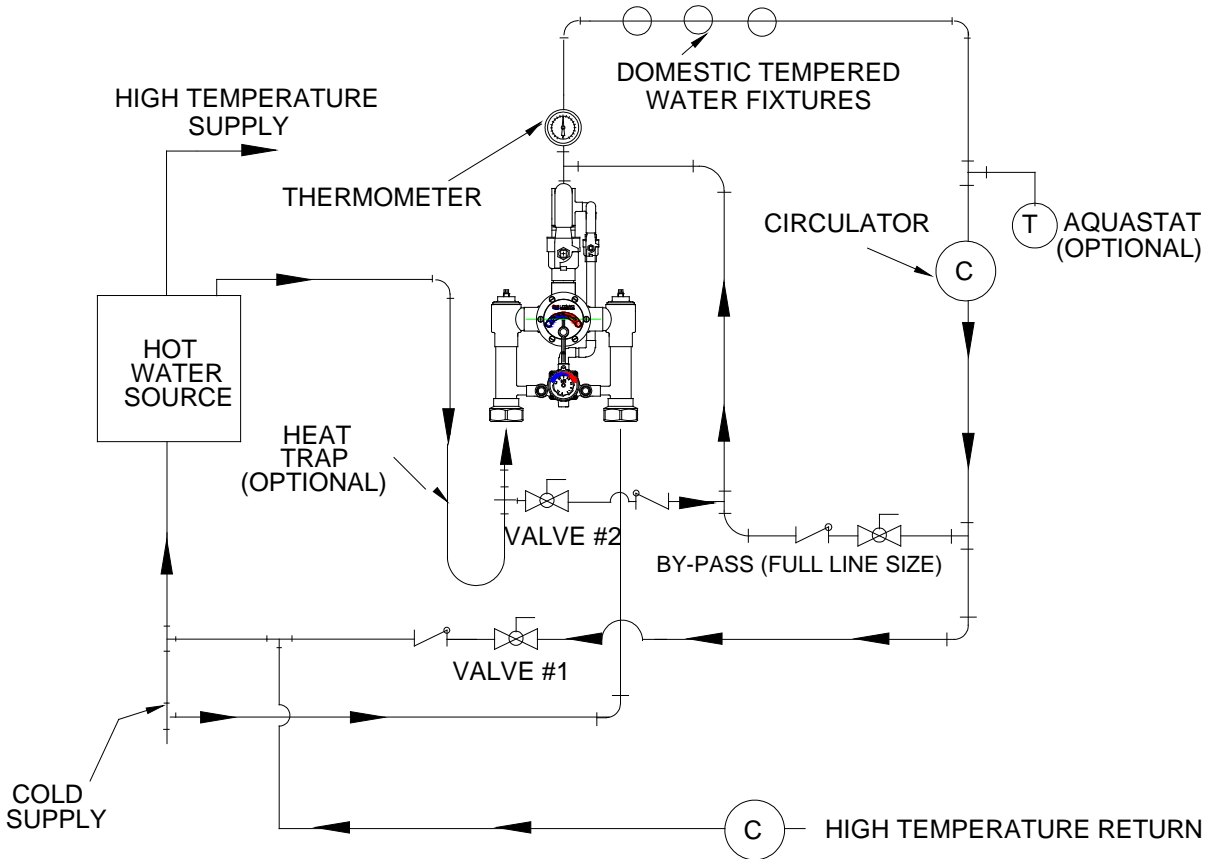


1360 Elmwood Avenue, Cranston, RI 02910 USA
Phone: 401.461.1200 Fax: 401.941.5310
Email: info@leonardvalve.com
Web Site: <http://www.leonardvalve.com>

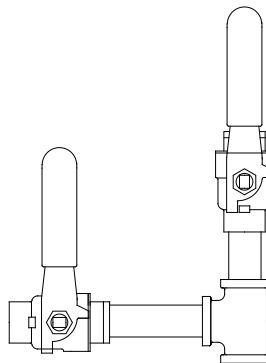
PIPING METHOD #2 only for systems circulating 8 GPM or less.

For 8-25 GPM use Method #4

For 25 GPM or more use Method #5 **Shown**



(OPTIONAL) TEST CONNECTION, Line size tee, with ball valves.



1360 Elmwood Avenue, Cranston, RI 02910 USA

Phone: 401.461.1200 Fax: 401.941.5310

Email: info@leonardvalve.com

Web Site: <http://www.leonardvalve.com>