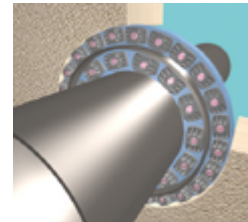
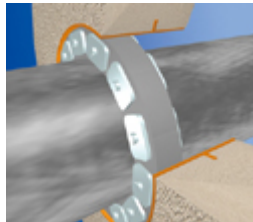


Link-Seal®...the world's standard for sealing pipe penetrations passing through walls, floors and ceilings.



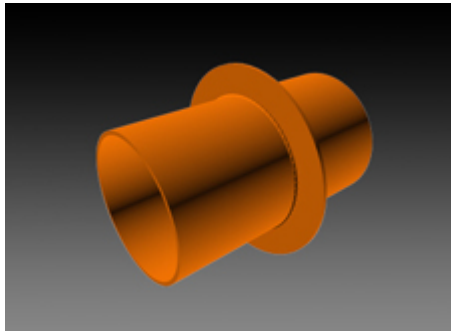
[HOME](#)



[Description](#)
[Benefits/Features](#)
[Dimensional Data & Weight Comparisons](#)
[Warranty](#)
[How to Order](#)

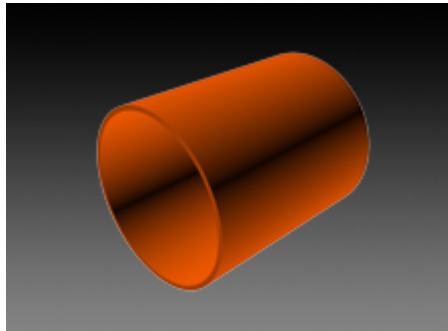
DESCRIPTIONS

Model WS Wall Sleeves



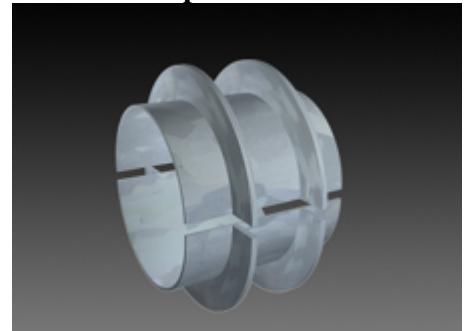
Model WS Steel Wall Sleeves are an excellent choice for installations where the Link-Seal® Modular Seal and WS sleeve assembly would be subject to extremely high temperatures or where fire seals are specified.

Model WS Intermediate Sleeves



WS Intermediate Sleeves are used in conjunction with Link-Seal® Modular Seals to seal all pipes passing through concrete or masonry structures that require two belts of seals to fill the annular space between pipe and wall.

Model WS Split Sleeves



Model WS Split Sleeves are used for installations where an existing pipe run needs to penetrate a wall yet to be constructed. During wall installation a split sleeve is welded around the existing pipe and positioned in the form to center the pipe. After installation a Link-Seal® Modular Seal is used to seal the annular space between split sleeve and pipe.

BENEFITS/FEATURES

WS Steel Sleeves

- Available from 2.07" (52.6mm) to 23.25" (59.1mm) Inside Diameters.
- 2" (50.8mm) Water Stop Collar with continuous weld-bead on both sides.
- Primed inside and out with Rust-O-Leum red primer #5268 or approved equivalent.
- May be order to any length.
- Special order diameters and schedule pipe available on request.

WS Intermediate Sleeves

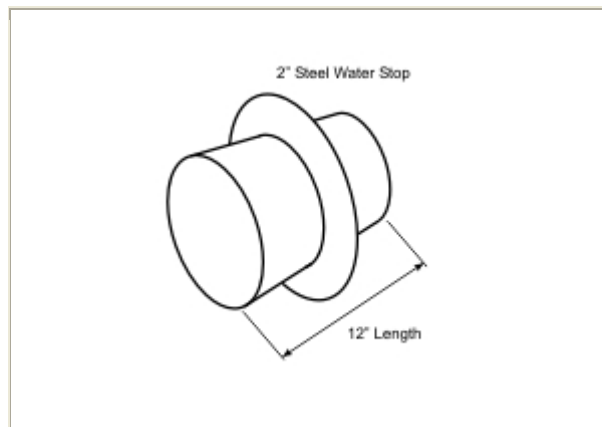
- Available from 2.07 (52.6mm) to 29.25 (74.3cm) Inside Diameters.
- Standard wall thickness = 0.375".
- Primed inside and out with Rust-O-Leum red primer #5268 or approved equivalent.
- May be order to any length.
- Special order diameters and schedule pipe available on request.

WS Split Sleeves

- Available from 2.07 (52.6mm) to 29.25 (74.3cm) Inside Diameters.
- Standard wall thickness = Schedule 40 for up to 10"Ø
- Standard wall thickness = 0.375" for 12"Ø and above.
- Two 2" water stop collars for added structural stability.
- Primed inside and out with Rust-O-Leum red primer #5268 or approved equivalent.
- May be order to any length.
- Special order diameters and schedule pipe available on request.

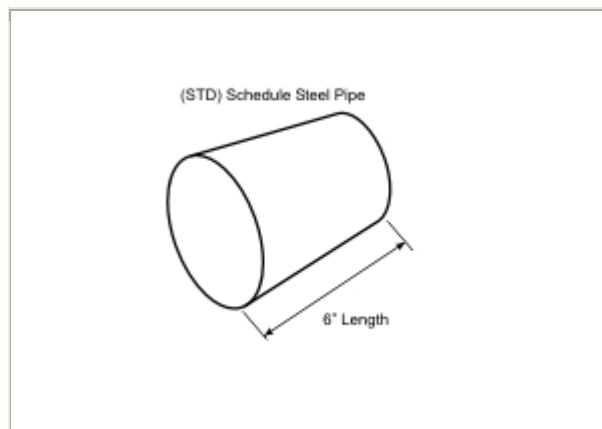


DIMENSIONAL DATA - PART NUMBERS



**MODEL WS STEEL SLEEVES
(12" length)**

MODEL	I.D.	lbs.	Kg.
WS-2-15-S-12	2.07	5.53	2.51
WS-2-1/2-20-S-12	2.47	7.91	3.58



**MODEL WS INTERMEDIATE SLEEVES
(6" length)**

MODEL	I.D.	lbs.	Kg.
WS-2-15-S-6NW	2.07	1.83	0.83
WS-2-1/2-27-S-6NW	2.47	2.90	1.31

WS-3-21-S-12	3.07	9.93	4.51
WS-3-1/2-22-S-12	3.55	11.70	5.31
WS-4-23-S-12	4.03	13.61	6.17
WS-5-25-S-12	5.05	17.91	8.12
WS-6-28-S-12	6.07	22.73	10.31
ws-6-18-S-12	6.25	14.82	6.72
WS-8-32-S-12	7.98	33.55	15.22
ws-8-18-S-12	8.25	21.94	9.95
WS-10-36-S-12	10.02	46.12	20.92
ws-10-25-S-12	10.25	33.67	15.27
WS-12-37-S-12	12.00	60.14	27.28
WS-14-37-S-12	13.25	62.04	28.14
WS-16-37-S-12	15.25	71.04	32.22
WS-18-37-S-12	17.25	79.98	36.28
WS-20-37-S-12	19.25	90.00	40.82
WS-22-37-S-12	21.25	98.00	44.45
WS-24-37-S-12	23.25	107.00	48.53

Note: WS sizes through 10" are schedule 40. WS sizes 12" and up have a standard 0.375" wall thickness. ws rolled sleeves (6" and 8") = 0.1875 wall thickness; (10") = 0.25" wall thickness.

WS-3-21-S-6NW	3.07	3.79	1.72
WS-3-1/2-22-S-6NW	3.55	4.55	2.07
WS-4-23-S-6NW	4.03	5.40	2.45
WS-5-25-S-6NW	5.05	7.31	3.32
WS-6-28-S-6NW	6.07	9.49	4.30
WS-8-32-S-6NW	7.98	14.28	6.48
WS-10-36-S-6NW	10.02	20.24	9.18
WS-12-37-S-6NW	12.00	24.78	11.24
WS-14-37-S-6NW	13.25	27.29	12.38
WS-16-37-S-6NW	15.25	31.29	14.20
WS-18-37-S-6NW	17.25	35.30	16.01
WS-20-37-S-6NW	19.25	39.30	17.83
WS-22-37-S-6NW	21.25	43.30	19.64
WS-24-37-S-6NW	23.25	47.31	21.47
WS-26-37-S-6NW	25.25	51.30	23.28
WS-28-37-S-6NW	27.25	55.30	25.09
WS-30-37-S-6NW	29.25	59.30	26.91

Note: Intermediate sleeves are 6" in length, with no welded water-stop collar.
NW = No Water-Stop Collar

