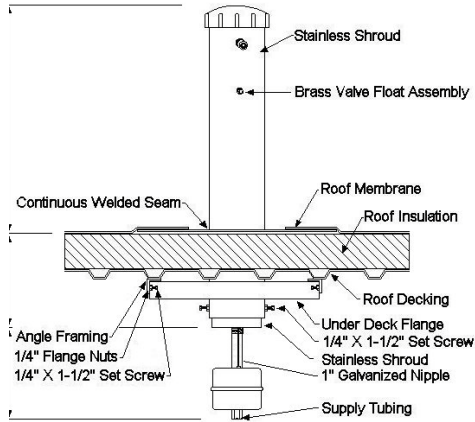




CERTIFIED FOR:
JOB NAME _____
LOCATION _____
CUSTOMER _____
CUSTOMER P.O. _____

Submittal Information: MPH-24FP:24/9 Pedestal Hydrant



Composition:

- Black powder coated cast aluminum Weather-Guard Dome Handle
- Grade 304 stainless steel shroud w/ welded stainless steel flange
- 125 lb. 1" Bronze Globe Angle Valve / Male Hose Fitting / Quick Disconnect w/ Built-in Vacuum Breaker
- Stainless steel reservoir

Insulation:

- R-8 rated / Thermo-Cell insulation

Mounting Hardware

- Black powder coated under-deck support flange w/ hardware

Practical Application

Where there is concern for potential damage to the hydrant assembly due to severe cold weather, the MPH-24FP:24/9 Pedestal Hydrant with its Weather-Guard Dome provides a freeze proof hose station at required locations. The Stainless Steel Shroud and Base allow the contractor to make a positive, weather tight flashing to the hydrant in rooftop applications. The hydrant meets ASSE 1057 Sanitary Yard Hydrant Standard.

Features

- The Weather-Guard Domed Handle enables the user to operate the valve assembly while preventing moisture from entering the assembly when the valve is in the OFF position.
- The hydrant utilizes the best of the Nibco globe valves within a fully insulated stainless steel shroud.
- The "drain down design" of the hydrant operates on the "venturi principle" and is a cooperative effort based on the design of the sanitary yard hydrants manufactured by "Hoeptner Products."
- The quick disconnect/vacuum breaker provided allows a hose to be readily removed when not in use so as to insure proper evacuation of the reservoir during freezing conditions.
- The Under-deck Flange prevents the Hydrant from becoming dislodged from the roof membrane during operation.

Warranty:

MAPA will repair or replace any defective parts or workmanship of this product for a period of one year from date of delivery. Damage caused by incorrect installation or improper usage is not warranted. Recovery rights shall be limited to the total sum of the amounts paid for the product by the purchaser.

Limits of Liability:

MAPA's liability shall be limited to costs of repair or replacement parts. Hydrants are not intended for usage other than those expressly described in this document. MAPA shall not be liable for damage or injury caused by the improper use of the product.

CERTIFICATION DATA

QUANTITY	STYLE		Dimensions (If other than Standard 24" above roofline)	Notes
	Roof	Yard		
	<input type="checkbox"/>	<input type="checkbox"/>		
	<input type="checkbox"/>	<input type="checkbox"/>		
	<input type="checkbox"/>	<input type="checkbox"/>		
	<input type="checkbox"/>	<input type="checkbox"/>		

DRAWN	CHECKED	DATE	DWG.NO.
--------------	----------------	-------------	----------------

OP2009-MPH24FP