

Experience

Milcor offers years of experience in the manufacture of a broad range of products and services for residential, commercial, institutional and industrial construction.

Engineering

Each Milcor Access Door is engineered for specific application. Two principles guide the design of our products:

Function - the door must provide the function desired.

Installation - the door must be easy to install in the location (wall or ceiling) and on the type of surface, and must provide the desired finished installed appearance.

Quality

Milcor has a long-established reputation for quality construction of metal access doors. At Milcor, the tradition of quality continues with advanced manufacturing techniques and quality control procedures, leading the industry in the Milcor tradition.

On-Time Delivery

Milcor knows, from long experience, the importance of on-time delivery of building components to meet construction schedules. Our reputation has been built on delivering every order on-time and complete.

Selection

Milcor access doors provide critical service access in all types of wall and ceiling areas. Milcor sets the standard for the most diversified offering of access doors. Doors are offered in standard and special sizes to meet specific customer needs.

Customization

Milcor access doors are sized to fit common framing dimensions for areas in which they are designed to be used. However, special sizes and modifications are available on request. All access doors are prime-painted gray, but have an option of a gold sand, jet black, or brilliant white painted finish.

Product Changes

Milcor reserves the right to change the design or details of its products without notice, so long as those changes do not affect the essential utility or function of the products.

Warranty

Milcor warrants for one year all goods sold to be free from defects in materials and workmanship, but limits our liability expressly to the replacement of goods not complying with this warranty; or, at our election, a credit to the buyer of the purchase price paid.

Product Index

Styles	Construction	Door Type	Application	Page
General Information				2
Valve Boxes	Prime Painted Steel	Enclosed Box	Valve Enclosures	3
M Style	Prime Painted Steel	Flush Frame	All Ceilings & Walls	4
DW Style	Prime Painted Steel	Drywall Bead	Drywall Ceilings & Walls	5
K Style	Prime Painted Steel	Plaster Lathe	Plaster Ceilings & Walls	6
DWR Style	Prime Painted Steel	Recessed Drywall	Drywall Ceilings & Walls	7
AP Style	Prime Painted Steel	Recessed Plaster	Plaster Ceilings & Walls	8
AT Style	Prime Painted Steel	Recessed	Acoustical Tile Ceilings	9
ATR Style	Prime Painted Steel	Recessed Fire-Resistant	Suspended Drywall Ceilings	9
UFR Style	Prime Painted Steel	Insulated Fire Rated	All Ceilings & Walls	10
NIFR Style	Prime Painted Steel	Non-Insulated Fire Rated	Walls	11
CF/CT Style	Mill Finish Aluminum	Attic Access	Ceilings	12
Security Style	Prime Painted Steel	High Security	Ceilings and Walls	13
Customized Doors				14
Technical Specifications				

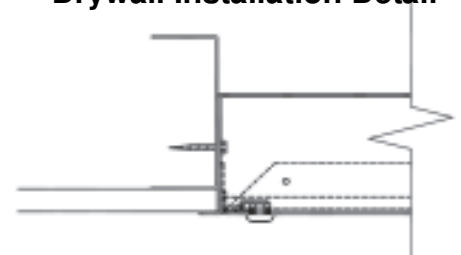
Versatile Valve Box

Advantages

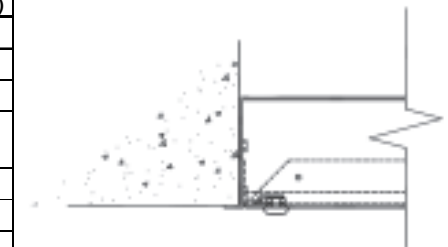
- ✓ Milcor's Versatile Valve Box with one-piece frame is the standard for the industry. The design provides 100% clear opening with superior strength, rigidity and true square shape.
- ✓ The fully enclosing box keeps valves clean and clear from excess materials within the wall cavity.
- ✓ The door panel is mounted to the frame on a piano hinge that opens to 175 degrees for complete access without allowing the door to impact the wall.
- ✓ For easy opening, the unit comes standard with a cylinder lock release mechanism which acts as a fingerhold assist in opening the door.
- ✓ Available in gray prime-painted steel, stainless steel and galvanized steel. Optional primed colors also include brilliant white, gold sand and jet black.



Drywall Installation Detail



Masonry or Tile Wall Installation Detail



Standard Sizes and Model Number

Door Size	Opening	Depth	Model Number		No. Cylinder Locks	Shipping Weight Each (lbs)
			Steel	Stainless		
8"x8"	8 5/8" x 8 5/8"	4"	3601-008-4	3602-008-4	1	11
	8 5/8" x 8 5/8"	6"	3601-008-6	3602-008-6	1	13
	8 5/8" x 8 5/8"	8"	3601-008-8	3602-008-8	1	15
12"x12"	12 5/8" x 12 5/8"	4"	3601-012-4	3602-012-4	1	14
	12 5/8" x 12 5/8"	6"	3601-012-6	3602-012-6	1	16
	12 5/8" x 12 5/8"	8"	3601-012-8	3602-012-8	1	18
14"x14"	14 5/8" x 14 5/8"	4"	3601-014-4	3602-014-4	1	20
	14 5/8" x 14 5/8"	6"	3601-014-6	3602-014-6	1	23
	14 5/8" x 14 5/8"	8"	3601-014-8	3602-014-8	1	27
16"x16"	16 5/8" x 16 5/8"	4"	3601-016-4	3602-016-4	1	23
	16 5/8" x 16 5/8"	6"	3601-016-6	3602-016-6	1	26
	16 5/8" x 16 5/8"	8"	3601-016-8	3602-016-8	1	30

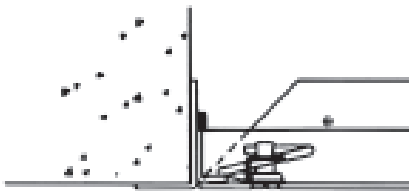
Standard Flush Door for Drywall, Masonry or Tile Walls - Style M

Advantages

- ✓ Milcor M or MS access doors with one-piece frame are the standard for the industry. The attractive one-piece frame provides 100% clear opening with superior strength, rigidity and true square shape.
- ✓ The door panel is mounted to the frame on concealed spring hinges that open to 175 degrees for complete access without allowing the door to impact the wall.
- ✓ For easy opening the cam lock release mechanism moves the edge of the door panel outward to provide a fingerhold.
- ✓ Available in gray prime-painted steel, stainless steel and galvanized steel. Optional primed colors also include brilliant white, gold sand and jet black.



Masonry or Tile Wall Installation Detail



Drywall Installation Detail



Standard Sizes and Model Number*

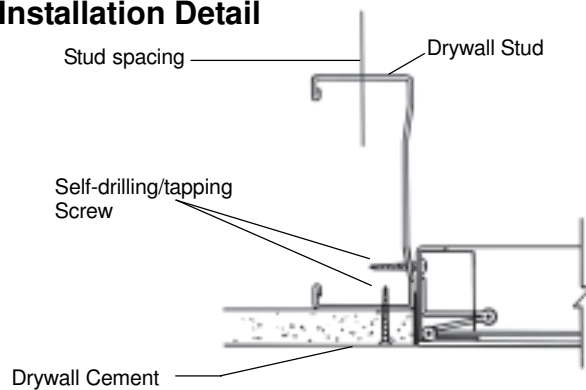
Door Size* (Second Dim. Hinge Side)	Opening	Style MS Stainless Model No.	Style M Steel Model No.	No. Cams	Shipping Weight Lbs.
6" x 6"	6 ¹ / ₄ " x 6 ¹ / ₄ "		3202-008	1	3
8" x 8"	8 ¹ / ₄ " x 8 ¹ / ₄ "	3202-410	3202-010	1	5
8" x 12"	8 ¹ / ₄ " x 12 ¹ / ₄ "		3202-012	1	6
10" x 10"	10 ¹ / ₄ " x 10 ¹ / ₄ "		3202-013	1	6
12" x 12"	12 ¹ / ₄ " x 12 ¹ / ₄ "	3202-414	3202-014	1	8
12" x 16"	12 ¹ / ₄ " x 16 ¹ / ₄ "		3202-016	1	10
12" x 18"	12 ¹ / ₄ " x 18 ¹ / ₄ "		3202-018	1	11
12" x 24"	12 ¹ / ₄ " x 24 ¹ / ₄ "		3202-019	2	13
14" x 14"	14 ¹ / ₄ " x 14 ¹ / ₄ "		3202-015	1	10
16" x 16"	16 ¹ / ₄ " x 16 ¹ / ₄ "	3202-420	3202-020	1	12
16" x 20"	16 ¹ / ₄ " x 20 ¹ / ₄ "		3202-022	1	14
18" x 18"	18 ¹ / ₄ " x 18 ¹ / ₄ "	3202-424	3202-024	1	13
18" x 24"	18 ¹ / ₄ " x 24 ¹ / ₄ "		3202-025	2	17
20" x 20"	20 ¹ / ₄ " x 20 ¹ / ₄ "		3202-027	2	16
20" x 24"	20 ¹ / ₄ " x 24 ¹ / ₄ "		3202-026	4**	20
20" x 30"	20 ¹ / ₄ " x 30 ¹ / ₄ "		3202-028	5**	24
22" x 22"	22 ¹ / ₄ " x 22 ¹ / ₄ "		3202-029	4**	20
24" x 24"	24 ¹ / ₄ " x 24 ¹ / ₄ "	3202-430	3202-030	4**	21
24" x 30"	24 ¹ / ₄ " x 30 ¹ / ₄ "		3202-032	5**	26
24" x 36"	24 ¹ / ₄ " x 36 ¹ / ₄ "		3202-034	5**	32
24" x 48"	24 ¹ / ₄ " x 48 ¹ / ₄ "		3202-035	5**	41
30" x 30"	30 ¹ / ₄ " x 30 ¹ / ₄ "		3202-038	5**	30
36" x 36"	36 ¹ / ₄ " x 36 ¹ / ₄ "		3202-046	5**	42

*Add "M" or "MS" to door size to indicate prime-painted (M) or stainless steel (MS).

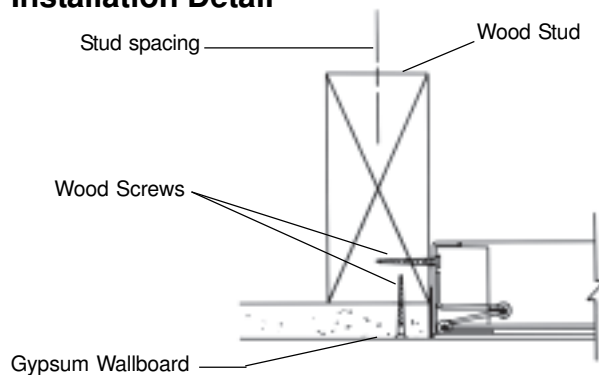
**One cam lock center at top and bottom panel; balance on side opposite hinges.

Standard Flush Door for Drywall Ceilings or Walls - Style DW

Steel Stud Installation Detail



Wood Stud Installation Detail



Advantages

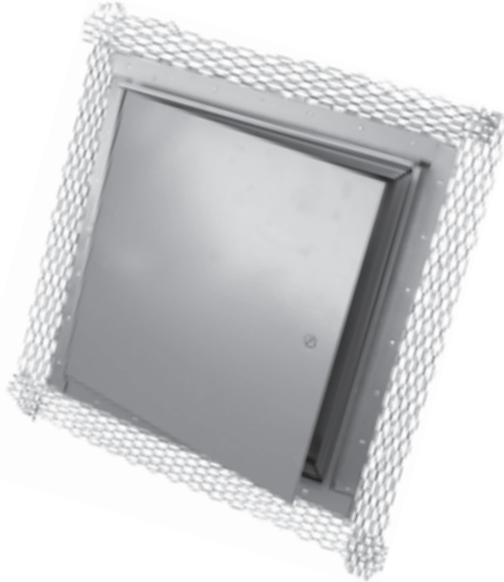
- ✓ Flush panel means that door is unobtrusive in appearance.
- ✓ Outer frame has special drywall bead configuration so that drywall cement may be applied to cover and conceal the flange.
- ✓ Standard sizes fit standard wood stud or steel stud spacing of 12", 16", or 24" on center with no additional bracing.
- ✓ Special double-acting concealed spring hinges allow opening to 175 degrees for complete access.
- ✓ The Milcor DW Access Door compliments drywall construction in a flush wall or ceiling installation.
- ✓ Available in gray prime-painted steel, stainless steel and galvanized steel. Optional primed colors also include brilliant white, gold sand and jet black.

Standard Sizes and Model Number

Stud Spacing	Door Size*	Opening	Model No.	Shipping Weight Lbs.
	8" x 8"	8 ¹ / ₂ " x 8 ¹ / ₂ "	3203-008	4
12" OC	10" x 10"	10 ¹ / ₂ " x 10 ¹ / ₂ "	3203-010	5
	12" x 12"	12 ¹ / ₂ " x 12 ¹ / ₂ "	3203-012	6
16" OC	14" x 14"	14 ¹ / ₂ " x 14 ¹ / ₂ "	3203-014	9
	16" x 16"	16 ¹ / ₂ " x 16 ¹ / ₂ "	3203-016	10
	18" x 18"	18 ¹ / ₂ " x 18 ¹ / ₂ "	3203-017	12
24" OC	22" x 22"	22 ¹ / ₂ " x 22 ¹ / ₂ "	3203-018	17
26" OC	24" x 24"	24 ¹ / ₂ " x 24 ¹ / ₂ "	3203-019	19
	24" x 36"	24 ¹ / ₂ " x 36 ¹ / ₂ "	3203-036	28

*One cam lock centered at top and bottom of panel; balance of cam locks on side opposite hinge.

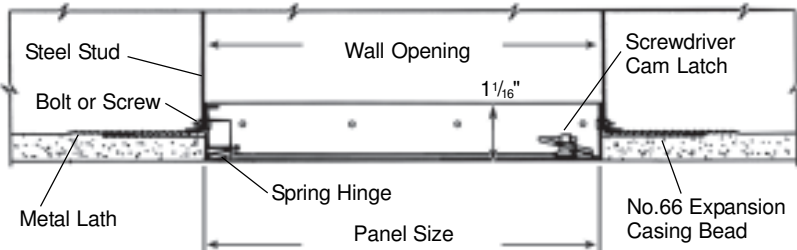
Standard Flush Door for Plaster Walls or Ceilings - Style K



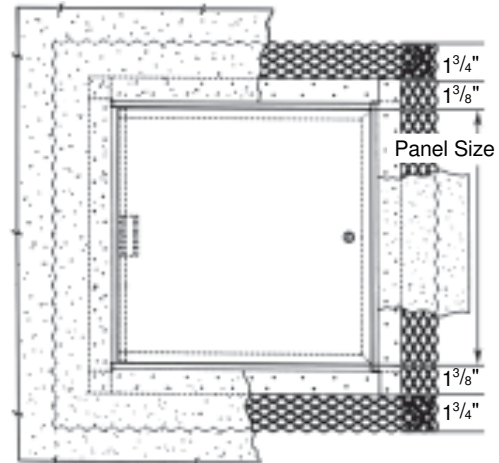
Advantages

- ✓ An expansion casing bead, included as part of the frame, provides a neat, protected finish between frame and plaster, while furnishing added plaster reinforcement.
- ✓ The door panel finishes flush with plaster surface, making an unobtrusive installation when painted, to match the wall or ceiling.
- ✓ The door panel is mounted to the frame with concealed spring hinges that open to 175 degrees for complete access without allowing the door to impact surrounding surface.
- ✓ Available in gray prime-painted steel, stainless steel and galvanized steel. Optional primed colors also include brilliant white, gold sand and jet black.

Installation Detail - Section AA



Installation Detail - Elevation



Standard Sizes and Model Number*

Door Size*	Opening	Model No.	Hinges	Locks	Shipping Weight Lbs.
8" x 8"	8 ¹ / ₄ " x 8 ¹ / ₄ "	3200-010	1	1	4
8" x 12"	8 ¹ / ₄ " x 12 ¹ / ₄ "	3200-012	1	1	6
12" x 12"	12 ¹ / ₄ " x 12 ¹ / ₄ "	3200-014	1	1	7
12" x 16"	12 ¹ / ₄ " x 16 ¹ / ₄ "	3200-016	2	1	9
12" x 18"	12 ¹ / ₄ " x 18 ¹ / ₄ "	3200-018	2	1	10
12" x 24"	12 ¹ / ₄ " x 24 ¹ / ₄ "	3200-019	2	2	12
16" x 16"	16 ¹ / ₄ " x 16 ¹ / ₄ "	3200-020	2	1	11
16" x 20"	16 ¹ / ₄ " x 20 ¹ / ₄ "	3200-022	2	1	13
18" x 18"	18 ¹ / ₄ " x 18 ¹ / ₄ "	3200-024	2	1	12
20" x 24"	20 ¹ / ₄ " x 24 ¹ / ₄ "	3200-026	2	4**	17
20" x 30"	20 ¹ / ₄ " x 30 ¹ / ₄ "	3200-028	3	5**	21
24" x 24"	24 ¹ / ₄ " x 24 ¹ / ₄ "	3200-030	2	4**	20
24" x 30"	24 ¹ / ₄ " x 30 ¹ / ₄ "	3200-032	3	5**	24
24" x 36"	24 ¹ / ₄ " x 36 ¹ / ₄ "	3200-034	3	5**	28

*Add "K" to door size to indicate style desired.

**Cam lock centered at top and bottom panel; balance of cam locks on side opposite hinges.

Recessed Door for Drywall Walls & Ceilings - Style DWR

Advantages

- ✓ Milcor's Style DWR recessed panel access door is designed for concealed installation in drywall applications to requiring sound absorption and a clean ceiling or wall appearance.
- ✓ Sound absorption is maintained by the field installed drywall panel inserted into the recessed door panels.
- ✓ When door panels are filled with drywall panels only the narrow frame edges are exposed creating a fire-resistive installation.
- ✓ Available in gray prime-painted steel, stainless steel and galvanized steel.



Standard Sizes and Model Number*

Door Size* (2nd Dim. Hinge Side)	Opening	Model No.	Cam Locks	Shipping Weight Lbs.
12" x 12"	12 ¹ / ₂ " x 12 ¹ / ₂ "	3207-014	1	9
12" x 24"	12 ¹ / ₂ " x 24 ¹ / ₂ "	3207-019	2	15
18" x 18"	18 ¹ / ₂ " x 18 ¹ / ₂ "	3207-024	2	15
24" x 24"	24 ¹ / ₂ " x 24 ¹ / ₂ "	3207-030	2	24
24" x 36"	24 ¹ / ₂ " x 36 ¹ / ₂ "	3207-034	3	32
36" x 36"	36 ¹ / ₂ " x 36 ¹ / ₂ "	3207-046	5	41
36" x 42"	36 ¹ / ₂ " x 42 ¹ / ₂ "	3207-048	5	41

