

250 PSI Bronze Disc Butterfly Valve

APPLICATIONS

- HVAC (Condensors, Chilled Water, Hot Water Heating)
- Compressed Air (Buna Liner)
- Domestic Hot & Cold Water
- Isolation and Throttling

MATERIALS & CONSTRUCTION

- Ductile Iron Body
- Aluminum Bronze Disc
- Extended Neck (for insulation purposes)
- Geometric Drive (eliminates the need for fasteners in the water way)
- Molded-In Liner
- Dead End Service Rating of 200 PSI
- Bi-Directional Shut-Off
- Available in Bare Stem, Lever and Gear Operator

DESIGN CRITERIA

- Install between standard Class 125 cast iron flanges or class 150 steel flanges
- Conforms to MSS SP-67 and MSS SP25 and API 609
- Designated by the United States Coast Guard as suitable for "Category A" service as defined by 46 CFR 56.20-15.



WD3000
WD3100



LD3000
LD3100

Sample Butterfly Valve Specification Line Control Valves 2" thru 12"

Butterfly Valves: Valve shall be full lug or wafer body style. Valves to be manufactured in accordance with MSS SP 67. The valves shall be rated at least 250 PSI (2" - 12") bi-directional differential pressure. Body to have 2" extended neck for insulation and shock resistant ductile iron. Valves to have aluminum bronze disc and molded in seat of EPDM/Buna-N rubber. Stem shall be 400 series stainless steel. Top and bottom stem bearings of dissimilar material than stem are required with a positive stem retention mechanism. Sizes 2" - 6" shall be lever operated with a 10 position throttling plate; sizes 8" and larger shall be gear operated. Lug style shall be capable of providing bi-directional "Dead End Service" at 200 PSI without the need for down stream blind flange. No exposed stem to disc fasteners and no exterior mounted fasteners to hold the liner are allowed

Acceptable valves:

- NIBCO LD/WD-3000 (2" - 12") (EPDM)
- NIBCO LD/WD-3100 (2" - 12") (Buna-N)

250 PSI Butterfly Valves

Ductile Iron Body • Extended Neck • Geometric Drive • Molded-in Seat Liner • Lug and Wafer Style

Sizes 2" through 12"

Install between Std. ANSI Class 125/150 Flanges
End of line service at 200 PSI with **NO** downstream flanges required

CONFORMS TO MSS-SP67 • MSS-SP25 • API-609 •
U.S. Coast Guard "Category A"

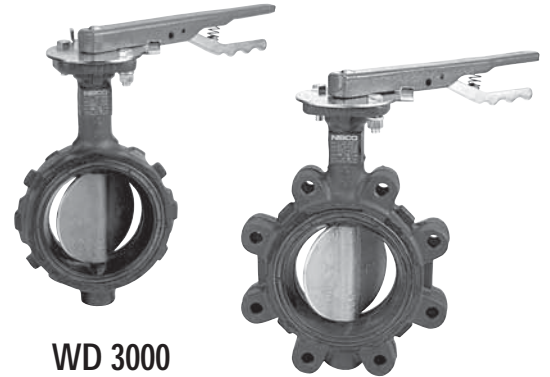
MATERIAL LIST

PART	SPECIFICATION
1. Stem	Stainless Steel ASTM A 582 Type 416
2. Collar Bushing	Brass ASTM B 124
3. Stem Seal	EPDM Rubber
4. Body Seal	EPDM Rubber
5. Nameplate	Aluminum
6. Upper Bushing	Copper CDA 122
7. Liner	EPDM Rubber
8. Disc	Alum. Brz. ASTM B 148 Alloy 954/955
9. Lower Bushing	Copper CDA 122
10. Body Wafer	Ductile Iron ASTM A 536
11. Body Lug	Ductile Iron ASTM A 536

DIMENSIONS — WEIGHTS

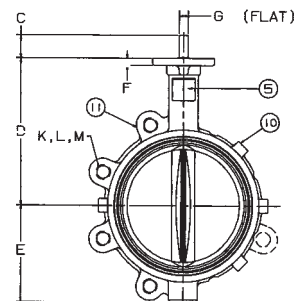
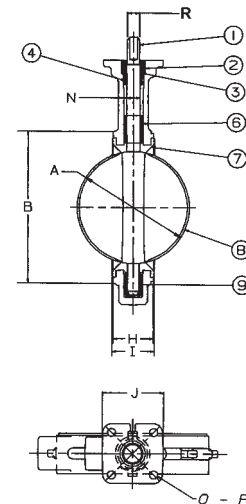
Size	G			Metal		Rubber		J		N		
In. mm.	A	B	C	Flat	H	I	Square	Dia.				
2 50	2.53	4.00	1.25	5.38	2.88	.38	.312	1.688	1.812	1.812	3.25	.500
2½ 65	2.90	4.69	1.25	5.88	3.27	.38	.370	1.812	1.938	1.938	3.25	.562
3 80	3.15	5.12	1.25	6.12	3.40	.38	.370	1.812	1.938	1.938	3.25	.562
4 100	4.09	6.12	1.25	6.88	4.00	.38	.403	2.062	2.188	2.188	3.25	.625
5 125	5.13	7.25	1.25	7.38	4.75	.38	.496	2.188	2.312	2.312	3.25	.750
6 150	6.13	8.25	1.25	8.00	5.29	.38	.496	2.188	2.312	2.312	3.25	.750
8 200	8.13	10.41	1.25	9.25	6.50	.50	.560	2.375	2.500	2.500	3.25	.875
10 250	10.13	12.52	1.25	10.50	8.00	.50	.686	2.688	2.812	2.812	4.75	1.125
12 300	12.13	15.00	1.25	12.00	9.25	.50	.748	3.000	3.125	3.125	4.75	1.250

Size	Capscrew/Stud Data					Wafer Lug Length	Lug Length	M B.C.	Lug Weight		Wafer Weight	
	O B.C.	P Dia.	R Dia.	K No.	L Dia.				Lbs.	Kg.	Lbs.	Kg.
2 50	3.25	.437	.437	4	5/8-11unc	Refer to page 43 of the Butterfly Valve Catalog for bolt lengths	4¾	7	3.2	5.5	2.5	
2½ 65	3.25	.437	.500	4	5/8-11unc		5½	9	4.1	7.5	3.4	
3 80	3.25	.437	.500	4	5/8-11unc		6	9.5	4.3	8	3.6	
4 100	3.25	.437	.562	8	5/8-11unc		7½	15	6.8	11	5.0	
5 125	3.25	.437	.656	8	¾-10unc		8½	21	9.5	15	6.8	
6 150	3.25	.437	.656	8	¾-10unc		9½	24	10.9	18	8.2	
8 200	3.25	.437	.781	8	¾-10unc		11¼	34	15.4	28	12.7	
10 250	5.00	.562	1.000	12	7/8-9unc		14¼	62	28.1	45.5	20.7	
12 300	5.00	.562	1.062	12	7/8-9unc		17	90	40.9	70	31.8	



WD 3000
Wafer Style
EPDM Liner
and Aluminum
Bronze Disc

LD 3000
Lug Style
EPDM Liner
and Aluminum
Bronze Disc



NOT RECOMMENDED
FOR STEAM SERVICE

250 PSI Butterfly Valves

Ductile Iron Body • Extended Neck • Geometric Drive • Molded-in Seat Liner • Lug and Wafer Style

Sizes 2" through 12"

Install between Std. ANSI Class 125/150 Flanges

End of line service at 200 PSI with **NO** downstream flange required

CONFORMS TO MSS-SP67 • MSS-SP25 • API-609 •
U.S. Coast Guard "Category A"

MATERIAL LIST

PART	SPECIFICATION
1. Stem	Stainless Steel ASTM A 582 Type 416
2. Collar Bushing	Brass ASTM B 124
3. Stem Seal	Buna-N Rubber Nitrile
4. Body Seal	Buna-N Rubber Nitrile
5. Nameplate	Aluminum
6. Upper Bushing	Copper CDA 122
7. Liner	Buna-N Rubber Nitrile
8. Disc	Alum. Brz. ASTM B 148 Alloy 954/955
9. Lower Bushing	Copper CDA 122
10. Body Wafer	Ductile Iron ASTM A 536
11. Body Lug	Ductile Iron ASTM A 536



WD 3100

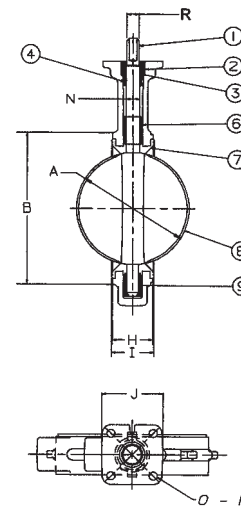
Wafer Style
Buna-N Liner
and Aluminum
Bronze Disc

LD 3100

Lug Style
Buna-N Liner and
Aluminum
Bronze Disc

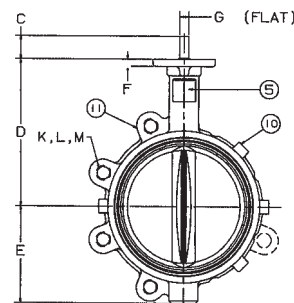
DIMENSIONS — WEIGHTS

Size												
In.	mm.	A	B	C	D	E	F	G Flat	Metal H	Rubber I	J Square	N Dia.
2	50	2.53	4.00	1.25	5.38	2.88	.38	.312	1.688	1.812	3.25	.500
2½	65	2.90	4.69	1.25	5.88	3.27	.38	.370	1.812	1.938	3.25	.562
3	80	3.15	5.12	1.25	6.12	3.40	.38	.370	1.812	1.938	3.25	.562
4	100	4.09	6.12	1.25	6.88	4.00	.38	.403	2.062	2.188	3.25	.625
5	125	5.13	7.25	1.25	7.38	4.75	.38	.496	2.188	2.312	3.25	.750
6	150	6.13	8.25	1.25	8.00	5.29	.38	.496	2.188	2.312	3.25	.750
8	200	8.13	10.41	1.25	9.25	6.50	.50	.560	2.375	2.500	3.25	.875
10	250	10.13	12.52	1.25	10.50	8.00	.50	.686	2.688	2.812	4.75	1.125
12	300	12.13	15.00	1.25	12.00	9.25	.50	.748	3.000	3.125	4.75	1.250



Capscrew/Stud Data

Size	Capscrew/Stud Data						Wafer Lug Length	Lug Length	M B.C.	Lug Weight		Wafer Weight	
	O B.C.	P Dia.	R Dia.	K No.	L Dia.	Wafer Length				Lbs.	Kg.	Lbs.	Kg.
2	50	3.25	.437	.437	4	5/8-11unc	Refer to page 43 of the Butterfly Valve Catalog for bolt lengths	4¾	7	3.2	5.5	2.5	
2½	65	3.25	.437	.500	4	5/8-11unc		5½	9	4.1	7.5	3.4	
3	80	3.25	.437	.500	4	5/8-11unc		6	9.5	4.3	8	3.6	
4	100	3.25	.437	.562	8	5/8-11unc		7½	15	6.8	11	5.0	
5	125	3.25	.437	.656	8	¾-10unc		8½	21	9.5	15	6.8	
6	150	3.25	.437	.656	8	¾-10unc		9½	24	10.9	18	8.2	
8	200	3.25	.437	.781	8	¾-10unc		11¾	34	15.4	28	12.7	
10	250	5.00	.562	1.000	12	7/8-9unc		14¾	62	28.1	45.5	20.7	
12	300	5.00	.562	1.062	12	7/8-9unc		17	90	40.9	70	31.8	



NOT RECOMMENDED FOR STEAM SERVICE

Butterfly Valves

For commercial, mechanical, light industrial and fire protection applications, NIBCO[®] is THE most specified line of butterfly valves. With more than 60 years of valve experience, NIBCO produces 1,200 butterfly valve options. NIBCO engineers and manufactures standard and assembled-to-order valves for the following applications:

- Hot and Cold Domestic Water
- Compressed Air
- Chemical
- Process Piping
- Isolation & Throttling
- HVAC
- Fire Protection
- Building Services
- Vacuum Service
- Ship Building

Why Engineers Specify NIBCO Butterfly Valves?

- End connections and body styles for variety of applications
- Knowledgeable sales force keeps you up-to-date and experienced in writing specifications
- Lean manufacturing techniques mean short run flexibility and quick start-ups
- Produce standard and assembled-to-order valves
- Meets recognized standards including MSS, UL/FM, ANSI, API, US Coast Guard "Category A"
- Dead End Service

