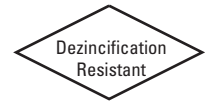


Bronze Ball Valves

One-Piece Body • Reduced Port • Bronze Trim • Blowout-Proof Stem



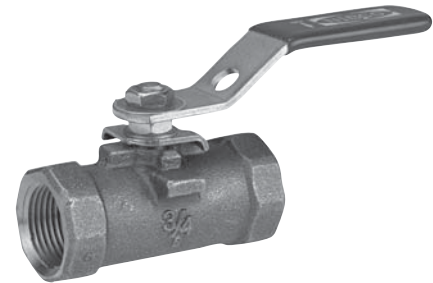
600 PSI/41.4 Bar Non-Shock Cold Working Pressure

CONFORMS TO MSS SP-110

MATERIAL LIST

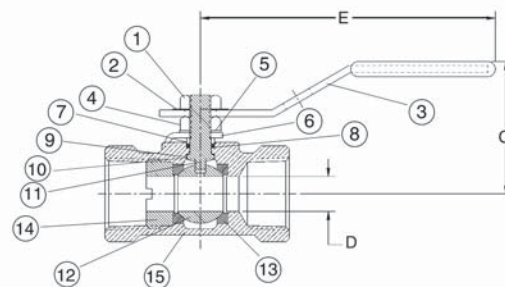
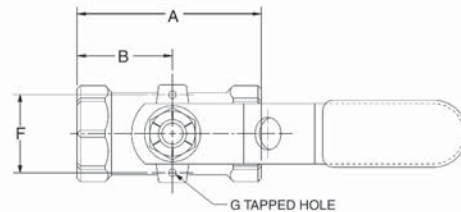
PART	SPECIFICATION
1. Handle Nut	Zinc Plated Steel
2. Identification Plate	Aluminum
3. Handle	Zinc Plated Steel Clear Chromate Plastisol Coated
4. ¹ Packing Nut	Stainless Steel
5. Belleville Washer	Zinc Plated Steel
6. Travel Stop	Zinc Dichromate Plated Steel
7. Pack Gland	Brass ASTM B 16 Alloy C36000
8. Packing	Reinforced PTFE
9. Grounding Washer	Stainless Steel ASTM A 167 Type 304
10. Thrust Washer	Reinforced PTFE
11. Stem	Bronze ASTM B 371 Alloy C69430
12. Ball	Brass ASTM B 124 Alloy C37700 or ASTM B 16 Alloy C36000
13. Seat Ring (2)	*PTFE (Y) or Reinforced PTFE (R)
14. Body Insert	Bronze ASTM B 584 Alloy C84400
15. Body	Bronze ASTM B 584 Alloy C84400
16. Body End Piece	Brass ASTM B 16 Alloy C36000 (not shown) 1/4 and 3/8 size only

¹ 1/4"-3/4" ASTM A 582 Type 416. 1"-2" 300 Series.



T-560-BR-*-20

Threaded



T-560-BR-*-20
NPT x NPT

DIMENSIONS—WEIGHTS—QUANTITIES

Size	Dimensions								T-560-BR-*-20		Master Ctn.	Qty.
	A	B	C	D	E	F	G	Lbs.	Kg.			
In. mm.	In. mm.	In. mm.	In. mm.	In. mm.	In. mm.	In. mm.	In. mm.	In.	Lbs.	Kg.		
1/4 8	2.63 67	1.34 34	1.63 41	.38 10	4.00 102	1.22 31	10-24	.66	.30		50	
3/8 10	2.63 67	1.34 34	1.63 41	.38 10	4.00 102	1.22 31	10-24	.63	.28		50	
1/2 15	2.63 67	1.34 34	1.63 41	.38 10	4.00 102	1.22 31	10-24	.59	.27		50	
3/4 20	2.88 73	1.50 38	1.71 43	.50 13	4.00 102	1.22 31	10-24	.82	.37		50	
1 25	3.31 84	1.71 43	2.00 51	.63 16	4.69 119	1.34 34	1/4-20	1.36	.62		40	
1 1/4 32	3.84 98	1.97 50	2.06 52	.81 21	4.69 119	1.50 38	1/4-20	2.01	.91		20	
1 1/2 40	4.03 102	2.03 52	2.56 65	1.00 25	6.75 171	1.63 41	1/4-20	2.75	1.25		20	
2 50	4.59 117	2.28 58	2.75 70	1.25 32	6.75 171	2.06 52	1/4-20	4.16	1.89		10	

Note: G Holes are only tapped for actuated valves.

◆ For detailed Operating Pressure, refer to Pressure Temperature Chart on page 41.