

# Bronze Ball Valves

Two-Piece Body • Standard Port • Blowout-Proof Stem • TFE Seats

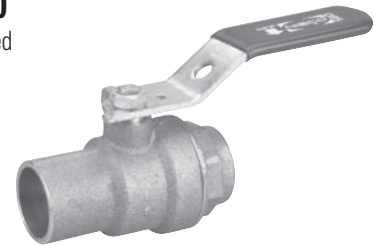
**400 PSI/27.6 Bar Non-Shock Cold Working Pressure**

## MATERIAL LIST

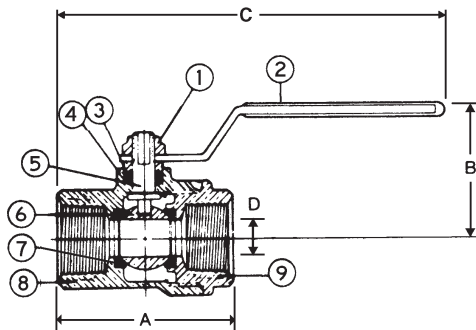
PART	SPECIFICATION
1. Handle Nut	Zinc Plated Steel
2. Handle	Zinc Plated Steel Clear Chromate Plastisol Coated
3. Packing Gland	Brass ASTM B 16 Alloy C36000
4. Packing	TFE
5. Stem	Silicon Bronze ASTM B 371 Alloy C69400 or ASTM B 16 Alloy C36000
6. Ball	Brass ASTM B 124 Alloy C37700 or ASTM B 16 Alloy C36000
7. Seat Rings	TFE
8. Body	Bronze ASTM B 584 Alloy C84400 or Brass ASTM B 124 Alloy C37700
9. Body End Piece	Bronze ASTM B 584 Alloy C84400 or Brass ASTM B 124 Alloy C37700



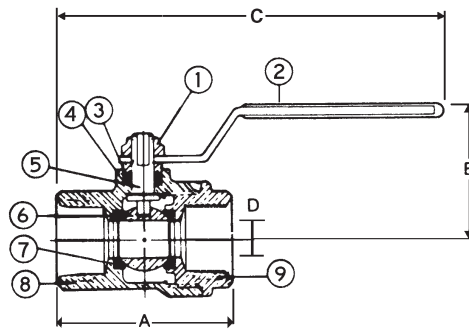
**T-580**  
Threaded



**S-580**  
Solder



**T-580**  
NPT x NPT



**S-580**  
C x C

## DIMENSIONS—WEIGHTS—QUANTITIES

Size	Dimensions												T-580		S-580		Master Ctn. Qty.
	A		A		B	C		C		D Port		Lbs.	Kg.	Lbs.	Kg.		
In. mm.	In. mm.	In. mm.	In. mm.	In. mm.	In. mm.	In. mm.	In. mm.	In. mm.	In. mm.	In. mm.	In. mm.	Lbs.	Kg.	Lbs.	Kg.		
½	15 2.00	51 1.94	49 1.56	40 1.56	40 4.88	124 4.84	123 .38	10 10	.50	.23	.50	.23	100				
¾	20 2.28	58 2.63	67 1.72	44 1.72	44 5.00	127 5.19	132 .50	13 13	.70	.32	.70	.32	100				
1	25 2.88	73 3.21	82 2.06	52 2.06	52 6.06	154 6.28	160 .75	19 19	1.20	.54	1.30	.59	50				
1¼	32 3.41	87 3.81	97 2.31	59 2.31	59 6.34	161 6.56	167 1.00	25 25	1.80	.82	1.60	.73	40				
1½	40 3.75	95 4.25	108 2.81	71 2.81	71 8.56	217 8.81	224 1.25	32 32	2.90	1.32	2.50	1.14	20				
2	50 4.44	113 5.21	132 3.06	78 3.06	78 8.88	226 9.25	235 1.50	38 38	4.30	1.95	3.60	1.70	10				

**S-580 series to be soft soldered into lines using solder with the melting point not exceeding 470° F. Higher temperature solders will damage the seat material.**