

Fig. 175

Roller Chair

Size Range: 2" through 30" pipe

Material: Cast iron roll, steel chair, roll rod, bolts and hex nuts

Finish: Plain or Galvanized

Maximum Temperature: 450° F at roller

Service: For support of pipe where longitudinal movement due to expansion and contraction may occur, but where no vertical adjustment is required.

Approvals: Complies with Federal Specification A-A-1192A (Type 44), WW-H-171-E (Type 45), ANSI/MSS SP-69 and MSS SP-58 (Type 44).

Installation: Two bolts and nuts provide anchorage to floor or top of steel beam or bracket or chair may be welded to supporting steel.

How to size:

- (1) If roll is to support bare pipe, select the size directly from nominal pipe size (see below).
- (2) If used with pipe covering protection saddle, see page 104 for size of pipe roll.
- (3) If roll is to support covered pipe, the O.D. of the covering should not be greater than the O.D. of the pipe for which the roll was designed.

Ordering: Specify size of roll, figure number, name and finish. Be certain to order oversized rolls when insulation and protection saddles are required.

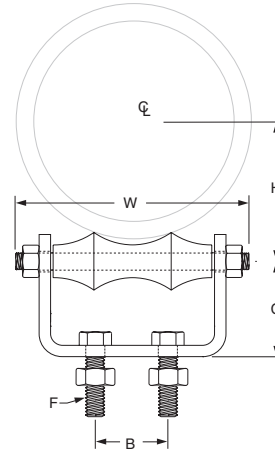


FIG. 175: LOADS (LBS) • WEIGHT (LBS) • DIMENSIONS (IN)							
Pipe Size	Max Load	Weight	W	B	C	F	H
2	600	1.1	4	1 1/4	1 1/2	3/8 x 1 1/2	1 5/8
2 1/2	660	1.4	4 7/8		1 5/8		1 15/16
3	700	1.6	5 3/8	2	1 3/4		2 1/4
3 1/2	750	2.6	6 1/8		2 1/16	2 9/16	
4		2.9	6 5/8	3	2 5/16	2 3/4	
5	3.7	7 7/8	2 1/2		1/2 x 1 1/2	3 7/16	
6	1,070	5.9	9 1/4	3 1/8		2 3/4	4
8	1,350	9.0	11 5/8	3 3/8	3	5/8 x 1 1/2	5 1/8
10	1,730	13.8	14 1/8	5 1/4	3 5/8		6 3/8
12	2,400	18.9	16 1/8	5 1/2	4 1/8	5/8 x 2	7 7/16
14	3,130	28.07	18 3/4	6 1/2	4 11/16		8 3/8
16	3,970	34.93	21	8 1/4	5 5/8	3/4 x 2	9 3/8
18	4,200	44.35	23 1/8	9 1/4	6		3/4 x 2 1/2
20	4,550	56.34	24 5/8	10 1/4	6 1/2	11 5/8	
24	6,160	87.52	29 3/8	12 1/4	7 7/8	7/8 x 3 1/2	14
30	7,290	151.25	34 13/16	15 3/8	8 3/4		17 7/16

DI/CI ROLL SIZING	
DI/CI Pipe Size	Fig. 175 Roller Size
3	4
4	5
6	6
8	8
10	10
12	14
14	16
16	18
18	20
20	24
24	30
30	No Recom.

PROJECT INFORMATION		APPROVAL STAMP	
Project:		<input type="checkbox"/> Approved	
Address:		<input type="checkbox"/> Approved as noted	
Contractor:		<input type="checkbox"/> Not approved	
Engineer:		Remarks:	
Submittal Date:			
Notes 1:			
Notes 2:			